



Supplement to Yanmar Kit Installation Instructions

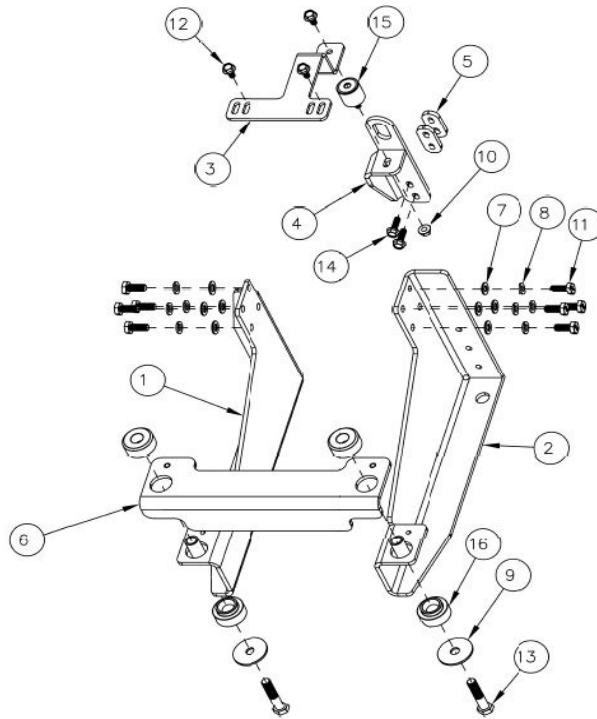
SAFETY

This product is designed and intended only for use with a YANMAR engine. All safety and warning information contained in the Yanmar Operation Manual and Service Manual is adopted and incorporated to apply to the components, accessories, and parts that are utilized with Yanmar engines. Follow all instructions and precautions before installing this product, before operating, during operation, and during periodic maintenance procedures for your safety, the safety of others, and to protect the performance of your engine.



YANMAR CO., LTD.
YANMAR AMERICA CORP.

Item	Lev.	O	Part No.	Description	Quantity	Remarks
1	-		20200281	Leg, Right Front, 422 x 257 x 6.35	1	
2	-		20200282	Leg, Left Front, 422 x 264 x 6.35	1	
3	-		20600159	Mount, Top, 23000211	1	
4	-		20800027	Mount, Upper, 23000068	1	
5	-	X	20900102	Spacer, Mount, Upper	2	May require 1 only
6	-		22000100	Bracket, Assy, Cross, 23000068	1	
7	-		64700072	Type A Plain Washer, M10 DIN 125	8	
8	-		64700073	Helical Spring Lock Washer, M10	8	
9	-		64700096	Large OD Plain Washer, 0.500 x 2.00 x 0.125	2	
10	-		64800159	Hex Serrated Flange Nut, M8-1.25	1	
11	-		64900084	Hex Cap Screw, M10-1.5 x 25	8	
12	-		64900174	Hex Serrated Flange Screw, M8-1.25 x 16	3	
13	-		64900182	Hex Cap Screw, 1/2-13 x 2.5	2	
14	-		64900200	Hex Serrated Flange Screw, M8-1.25 x 25	2	
15	-		65500001	Isolator, 32 x 32, M8-1.25	1	
16	-		65500002	Isolator, 46.4mm, 51.21mm, 1/2-13	2	



MODELS
4TNV88C

Remarks:



Installation Instructions

Hand tighten all bolts and nuts until assembly is completed, then torque according to specifications in Table 1. The numbers in () represent the item numbers.

1. Remove lifting eye by removing the 2 bolts that hold it in place. Also remove 2 bolts beside lifting eye bolts. (Remove everything in blue in picture below).
2. Using M8 xX 1.25 -25mm bolts (14) and (1 or 2) Mount Upper Spacers (5), fasten the Upper Mount (4) to the front of the cylinder head, replacing the front lifting eye of the engine.
3. Fasten M8 Isolator (15) and Top Mount (3) to Upper Mount using M8 X 1.25 - 16mm bolt (12) and M8 X 1.25 nut (10).
4. Assemble Right Front Leg (1) and Left Front Leg (2) to engine mounting pads using Washers (7), Lock Washers (8) and M10 X 1.5 - 25mm bolts (11) provided in the kit.
5. Locate Assy Cross Bracket (6) onto Front Legs using guide pins. Assemble Isolators (16) in large openings at the sides of the Cross Bracket.
6. Install the Radiator Kit and refer to Radiator Kit instructions to complete assembly.



NOTE: Comply with torque standards in the table to avoid unexpected damage during installation or in the future.

TABLE 1: Tightening Torque

Diameter x Pitch	Kgf-m	Foot-lbf	N-m
M8 x 1.25	1.5 ~ 2.9	10.6 ~ 20.9	14.4 ~ 28.3
M10 x 1.50	4.5 ~ 5.5	32.5 ~ 39.8	44.0 ~ 54.0