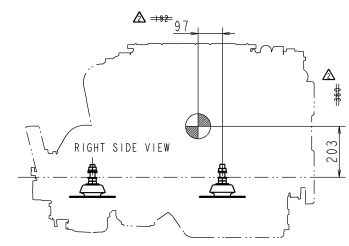
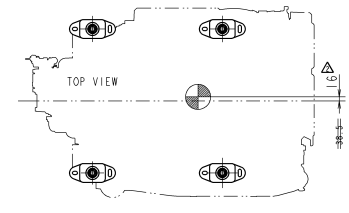
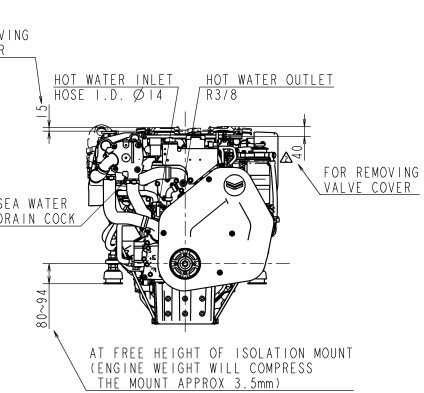
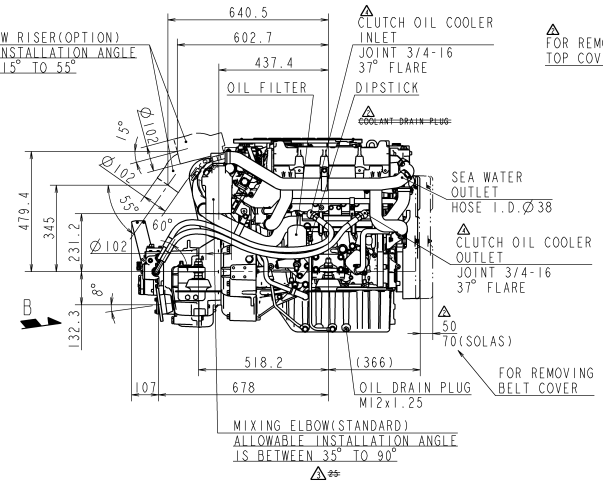
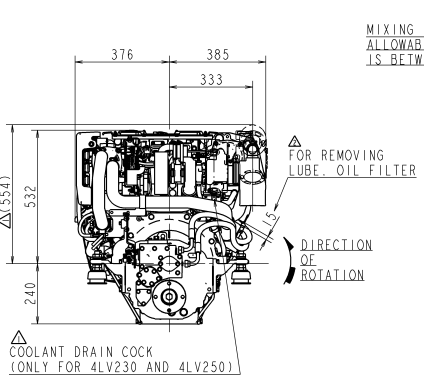
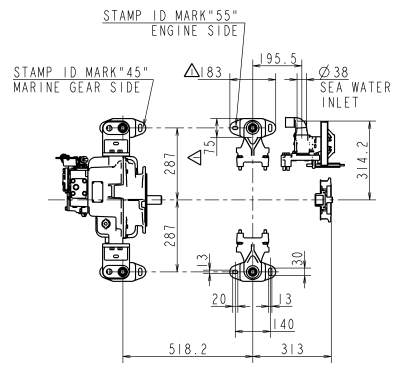
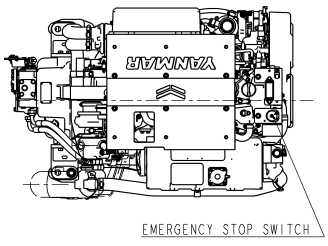
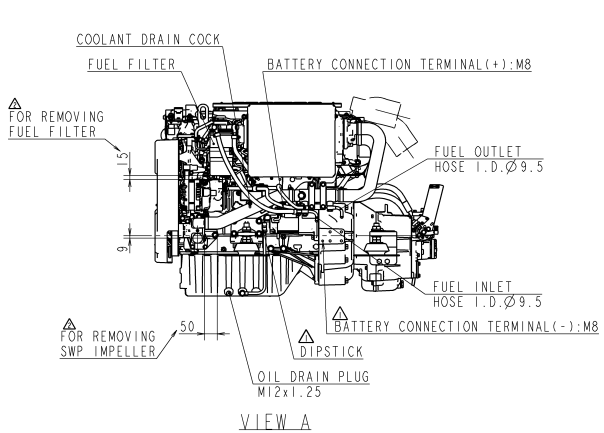


NEED	GEN. TOL.	PURCHASING SPECIFICATION	REQUEST FOR APPROVAL	DELIVERY DRAWING	INSPECTING STANDARD	QC-PROCESS										
○	○	○	○	○	○	○										
GEN. TOL.	DRAFT ANG.	OUTSIDE	INSIDE	CAM TAIL THICK	FORMAL DIM	5 MAX	10 TO	18 TO	30 TO	120 TO	250 TO	400 TO	800 TO	1600 TO	10 MAX	10 MIN
GEN. TOL.	27/100	3/100	3/100	SHELL	±0.1	±1.0	±1.5	±2.0	±3.0	±1.0	±1.5	±2.0	±3.0	±4.0	±1.0	±1.5
GEN. TOL.	27/100	3/100	3/100	SHELL	±0.1	±1.0	±1.5	±2.0	±3.0	±1.0	±1.5	±2.0	±3.0	±4.0	±1.0	±1.5

3RD ANGLE PROJECTION

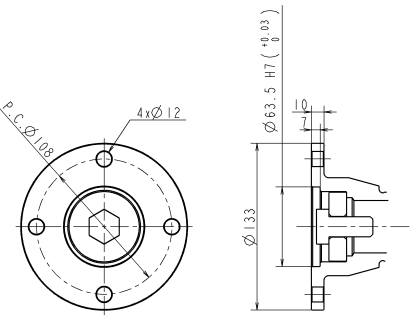
CAREER

RELEASE OF DRAWING FOR MASS PRODUCTION.
 (YOSBD-17005)
 REV1(2017.12.5)
 (YOSBD-17006)(ISHII)
 REV2(2018.5.11)
 (YOSBD-18003)(T.NAKAMURA)
 REV3(2018.11.7)
 (YOSBD-18013)(S.ASA)
 REV4(2019.12.2)
 (YOSBD-19025)(ISHII)



CENTER OF GRAVITY

重産用 FOR MASS PRODUCTION



DETAIL OF COUPLING
 ARROW B
 (SCALE 1:2)

MODEL	SPECIFICATIONS				
	△ 4LV150(C)	4LV170(C)	4LV195(C)	△ 4LV230(C)	△ 4LV250
Continuous Power (ISO8665)kW/min ⁻¹	100 / 3392	114 / 3392	130 / 3392	154 / 3683	168 / 3683
Fuel Stop Power Crankshaft (ISO8665)kW/min ⁻¹	110 / 3500	125 / 3500	143 / 3500	169 / 3800	184 / 3800
Engine Mass	kg Approx. 388				
Direction Of Propeller Shaft Rotation	Counter-clockwise				

MANAGER	西條							
SEC. MANAGER	馬場							
CHECKED	SPECIALIST	QTY	4LV	4LV	4LV	4LV	SCALE	1:10
DESIGNED	馬場	DATE: Y.M.D	2017.10.24	NAME	4LV X KMH50A OUTLINE			
YANMAR			REV:REV3/REV4			CODE B2-20672-0020		