

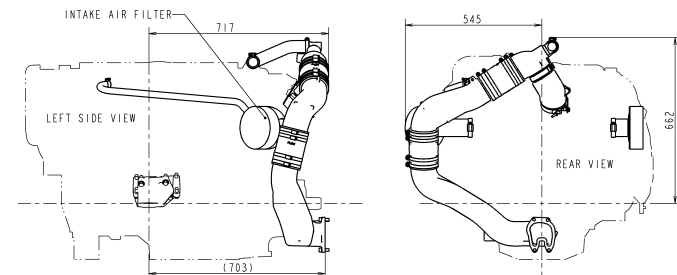
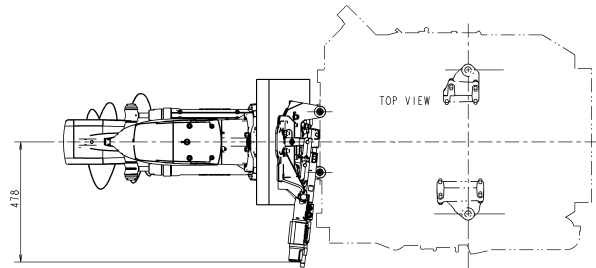
3RD ANGLE PROJECTION

GEN. TOC.	NEED	○	PURCHASING SPECIFICATION	REQUEST FOR APPROVAL	DELIVERY DRAWING	INSPECTING STANDARD	QC-PROCESS
GEN. TOC.	NEED	○	21/100 31/100	CAST WALL THICKNESS	SHIELD	±0.8 ±1.0 ±1.5 ±2.0 ±2.0	L: -CAST 粗削り

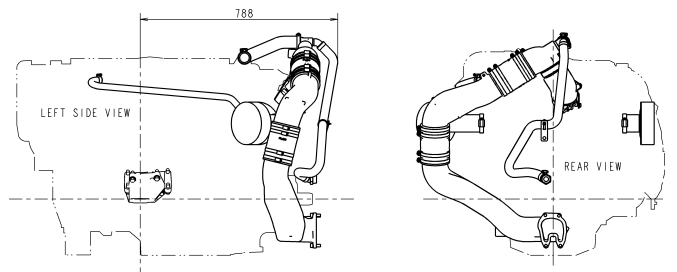
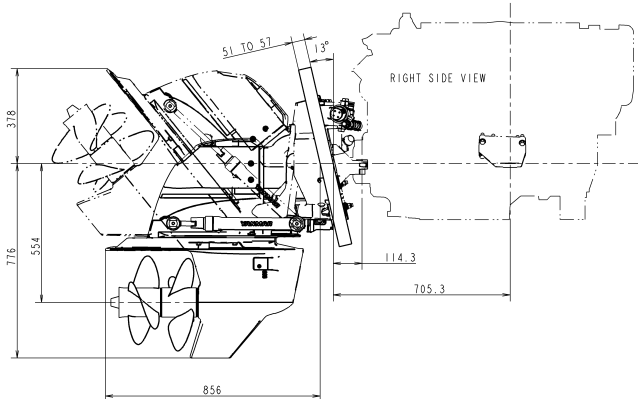
RAWMATERIAL	DRIFT ANG.	OUTSIDE	INSIDE	FORMAL DIM	5 MAX	10 TO	18 TO	30 TO	120 TO	250 TO	400 TO	800 TO	1600 TO	120 MAX	250	400	800	1600	3150	ANG. CHIP	10 MAX	±10G	FIGURE DIMENSION	GT. CODE
DRIFT ANG.	OUTSIDE	INSIDE	FORMAL DIM	5 MAX	10 TO	18 TO	30 TO	120 TO	250 TO	400 TO	800 TO	1600 TO	3150	120 MAX	250	400	800	1600	3150	ANG. CHIP	10 MAX	±10G	FIGURE DIMENSION	GT. CODE
CAST WALL THICKNESS	SHIELD	±0.8 ±1.0 ±1.5 ±2.0 ±2.0	L: -CAST 粗削り	±1.0 ±1.5 ±2.0 ±3.0 ±3.5	±1.0 ±1.5 ±2.0 ±3.0 ±4.0 ±5.0 ±7.0 ±8.0	0.5 TO 6 TO 30 TO 120 TO	±0.1 ±0.2 ±0.3 ±0.5	400 TO 1000 TO 2000 TO	±1.0 ±1.2 ±1.5	±0.8 ±1.2 ±2.0	10 TO 50 TO 120 TO 400 MIN	±10G ±20MIN ±30MIN	FIGURE DIMENSION	GT. CODE										

CAREER

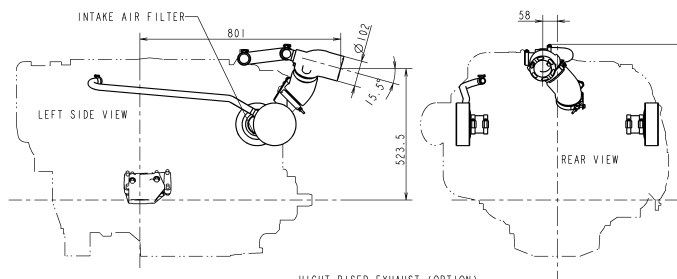
78010.08.31) 検査用として関係部等に
RELEASE OF DRAWING FOR
MASS PRODUCTION.
(YDSBD-18005) (注1)
REV.1 (2011.05.17)
フレアガス機
CHANGE HOSE OF BREATHER.
(YDSB0-11005) (注2)
2012.8.21) P5オイルクーラセシヤ
(YDSP-12012) (注2)
注1用 ホース08用 仕様コード変更
(YDSBD-18023)



DRIVE EXHAUST (WITHOUT BYPASS)
D19799-13280 ELBOW, WATER MIXING
D19799-13410 EXHAUST PIPE ASSY
D19799-18130 SILENCER ASSY, INTAKE
D19799-49611 HOSE ASSY, MIXING



DRIVE EXHAUST WITH WATER BYPASS (OPTION)
D19799-13280 ELBOW, WATER MIXING
D19799-13410 EXHAUST PIPE ASSY
D19799-18130 SILENCER ASSY, INTAKE
D19799-49621 HOSE ASSY, BYPASS



HIGHT RISER EXHAUST (OPTION)
D19799-13291 ELBOW, WATER MIXING
D19799-18130 SILENCER ASSY, INTAKE

DRIVE UNIT	REDUCTION	DRY WEIGHT, kg	DIRECTION OF ROTATION
ZT370	- - 1.65 1.78 - -	100	CONTRAROTATING PROPS

NOTES
1. REFER TO "B2-19799-0010" DRAWING FOR DETAIL OF ENGINE.

MANAGER
山口

MASS (RAW)	kg
MASS (CALC.)	212.245kg (注: #1)

SEC. MANAGER 志賀	MODEL	8LV 3202 (C1)	8LV 3502 (C1)	8LV 3702	SCALE	1:10
CHECKED 北本	SPECIALIST	QTY			MATERIAL	
DESIGNED 志賀	DRAWN 志賀	DATE: Y.M.D	2018.11.23	NAME		

CAD SYSTEM	Pro/Engineer Wildfire2.0
ARCHIVE FILE NAME	B2-19799-0020_rev1.zip
FILE ARCHIVER	ZIP
DATA TRANSLATION FORMAT	IGES

YANMAR
YANMAR CO.,LTD. DEVELOPMENT DIV.

8LV-Z APPLICATION (1/2)
OUTLINE DRAWING FOR OPTIONAL PARTS
CODE B2-19799-0021

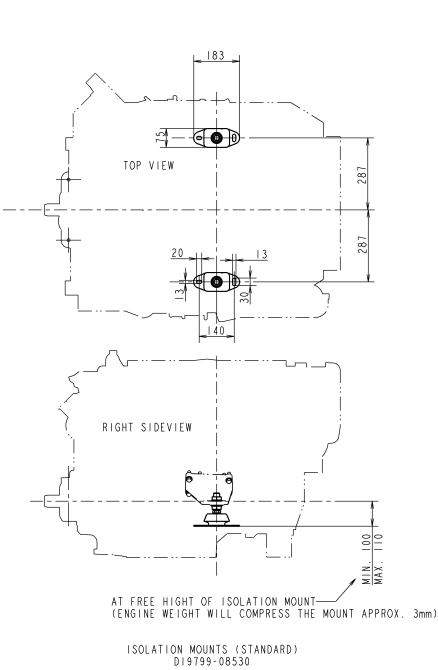
NEED	○	PURCHASING SPECIFICATION	REQUEST FOR APPROVAL	DELIVERY DRAWING	INSPECTING STANDARD	QC-PROCESS
GEN. TO.	○	DRAFT ANG. 外図面 2/100	内図面 3/100	铸件外形 3/100	铸件内部 3/100	L-CAST 铸件

120 TO	250 TO	400 TO	800 TO	1600 TO	0.5 TO	≥ 6	±0.1	400 TO	±1000	±0.8	10 MAX	±10DG	
120 MAX	± 250	± 400	± 800	± 1600	6 TO	≥ 30	±0.2	1000 TO	±2000	±1.2	10 TO	± 50	
±1.0	±2.0	±3.0	±4.0	±5.0	30 TO	≥120	±0.3	2000 TO	±4000	±2.0	50 TO	±120	
±1.5	±2.0	±3.0	±4.0	±5.0	120 TO	≥400	±0.5					400 MIN	± 5MIN

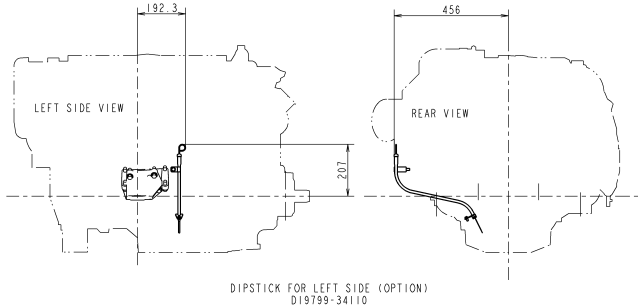
FIGURE DIMENSION
0 10 20 30 40 50 60 70 80 90 100 110 120 130 140 150 160 170 180 190 200 210 220 230 240 250 260 270 280 290 300 310 320 330 340 350 360 370 380 390 400 410 420 430 440 450 460 470 480 490 500

GT. CODE

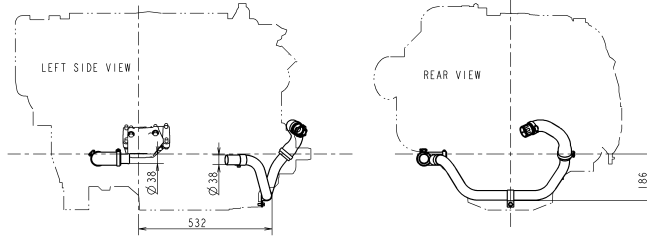
○ AND / RADIAL



ISOLATION MOUNTS (STANDARD)
D19799-08530



DIPSTICK FOR LEFT SIDE (OPTION)
D19799-34110



SEA WATER INTAKE PIPE FROM ZT370 DRIVE (STANDARD)
D19799-49520

With respect to the use of environmentally hazardous substances or the parts, the substances in use shall conform to the requirements specified in the standard. Restrictions of use for environmentally hazardous substances.

環境に有害な物質の使用については、標準に示した要件に適合するものを使用することとし、使用制限事項を遵守してください。

- 3D-CAD
- NOTICE
- IDENTICAL TO SOURCE
- KIND OF TOLERANCE
- DIMENSIONAL TOLERANCE
- FINISH
- SURFACE TREATMENT
- MATERIAL
- COLOR
- PAINT
- FINISH
- COATING
- PACKAGING
- STORAGE
- LABELING
- IDENTIFICATION
- MARKING
- FINISH
- COLOR
- PAINT
- FINISH
- COATING
- PACKAGING
- STORAGE
- LABELING
- IDENTIFICATION
- MARKING

MASS (RAW) kg (std. #)		MANAGER	
MASS (CALC.) 212.245kg (std. #)		1110	
SEC. MANAGER 志賀	MODEL	8LV 320Z (C1)	8LV 350Z (C1)
CHECKED 志賀	SPECIALIST	8LV 370Z	SCALE 1:10
DESIGNED 志賀	DRAWN	DATE: Y.M.D	MATERIAL
		2018.11.23	
<p style="text-align: center;">YANMAR</p> <p style="text-align: center;">YANMAR CO., LTD. DEVELOPMENT DIV.</p>			
		CODE	B2-19799-0021