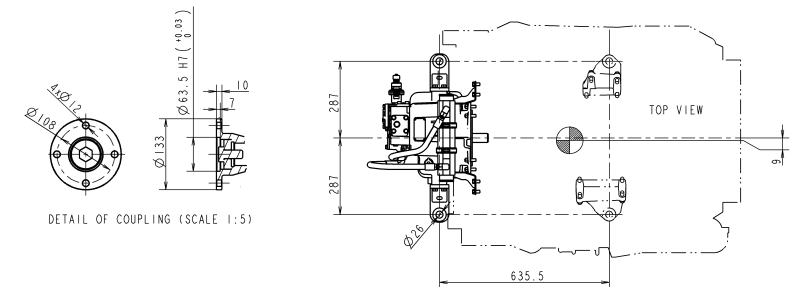


(2010.08.31) 最新規格に適合する  
 RELEASE OF DRAWING FOR  
 MASS PRODUCTION  
 (YDSBD-10005) (実施)

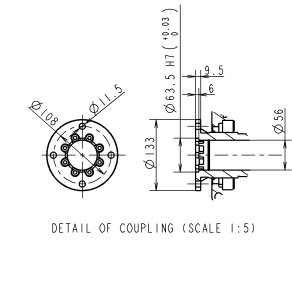
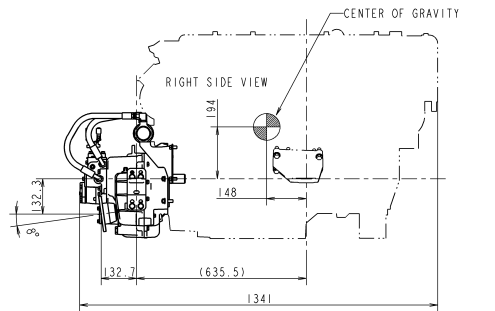
GEN. REQ.	DRAFT ANG.	PURCHASING SPECIFICATION		REQUEST FOR APPROVAL	DELIVERY DRAWING	INSPECTING STANDARD		QC-PROCESS	
		OUTSIDE	INSIDE	NOMINAL DIM DIVISION	S MAX.	5 TO = 10	10 TO = 18	18 TO = 30	30 TO = 50
		2/100	3/100	CAST MALL THICK SANDMOLD SHELL	±0.8	±1.0	±1.5	±2.0	±3.5
					±0.8	±1.0	±1.5	±2.0	±3.5

FIGURE DIMENSION	GT.CODE
0.5 TO = 6 ±0.1	
6 TO = 30 ±0.2	
30 TO = 120 ±0.3	
120 TO = 400 ±0.5	
400 TO = 1000 ±0.8	
1000 TO = 2000 ±1.2	
2000 TO = 4000 ±2.0	
4000 TO = 10000 ±3.0	
10 TO = 50 ±0.1MM	
50 TO = 120 ±0.1MM	
120 TO = 400 ±0.1MM	
400 MIN = 5MM	

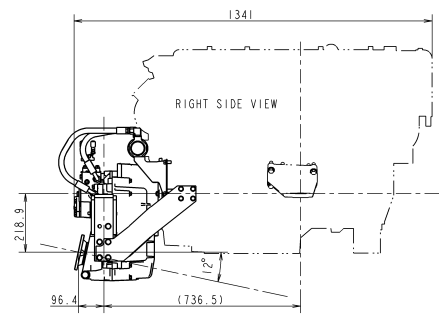
○ AND /: RADIAL



KMH50A MARINE GEAR



KMH52V MARINE GEAR



With respect to the use of environmentally hazardous substances for the parts, the substances in use shall conform to the requirement specified in YS 4000J1, "Restrictions of use for Environmentally Hazardous Substances".  
 本品の構成部品に使用する環境に有害な物質は、YS 4000J1「環境に有害な物質の使用の制限」に示す要求事項に適合することを要する。

3D-CAD

NOTICE

TECHNICAL SYMBOL	
TYPE OF DIMENSION	
BOUNDARY TREATMENT	
SCALE	
PROJECTION METHOD	
SECTION LINE	
WELD LINE	
WELD SYMBOL	
WELD DIMENSION	
WELD SYMBOL	
WELD DIMENSION	
WELD SYMBOL	
WELD DIMENSION	

NOTES.  
 1. REFER TO "B2-19798-0010" DRAWING FOR DETAIL OF ENGINE.

CAD DATA INFORMATION OF THIS DRAWING.	
CAD SYSTEM	Pro/Engineer Wildfire2.0
ARCHIVE FILE NAME	b2-19798-0020_rev0.zip
FILE ARCHIVER	7zip
DATA TRANSLATION FORMAT	IGES

GEAR MODEL	REDUCTION				DRY WEIGHT WITH ENGINE, kg	DIRECTION OF ROTATION (AT OUTPUT COUPLING)
KMH50A	-	1.67	2.13	2.43	492	BOTH
KMH52V	1.22	1.58	2.08	2.47	-	

DESIGNED	DRAWN	DATE: Y. M. D	NAME
田嶋	志賀	2009.11.13	田嶋

MASS, RAW	kg	
MASS, CALC.	kg	
SEN. ENGINEER	SEC. MANAGER	
伊藤	敬次	
CHECKED	SPECIALIST	
志賀	西條	
DESIGNED		DATE: Y. M. D
田嶋		2009.11.13
8LV APPLICATION (1/2)		
OUTLINE DRAWING FOR OPTIONAL PARTS		
YANMAR		CODE
YANMAR CO., LTD. DEVELOPMENT DEPT.		B2-19798-0020

GEN. TOL.	DRAFT ANG.	PURCHASING SPECIFICATION		REQUEST FOR APPROVAL	DELIVERY DRAWING		INSPECTING STANDARD		QC-PROCESS
		OUTSIDE	INSIDE		NOMINAL DIM	SANDMOLD	SHELL	5 MAX	

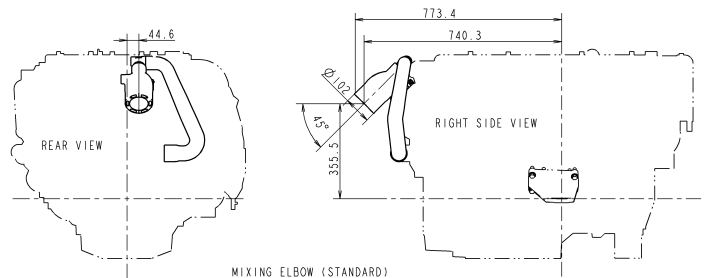
120 MAX	±1.0	120 TO	±1.5	250 TO	±2.0	400 TO	±3.0	800 TO	±4.0	1600 TO	±6.0
L-C-CHIP (単位)											

0.5 TO	±0.1	10 TO	±0.2	30 TO	±0.3	100 TO	±0.5	300 TO	±0.8	1000 TO	±1.2	3000 TO	±2.0
ANG. CHIP (角度)													

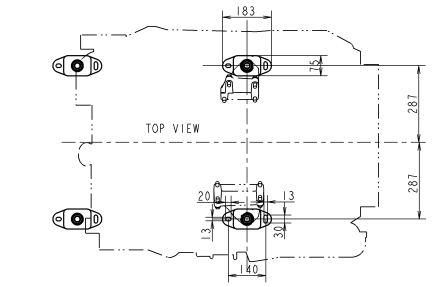
10 TO	±0.1	50 TO	±0.2	100 TO	±0.3	200 TO	±0.5	400 TO	±0.8	1000 TO	±1.2	3000 TO	±2.0
10 MAX ±1 DEG													

FIGURE DIMENSION	GT.CODE
------------------	---------

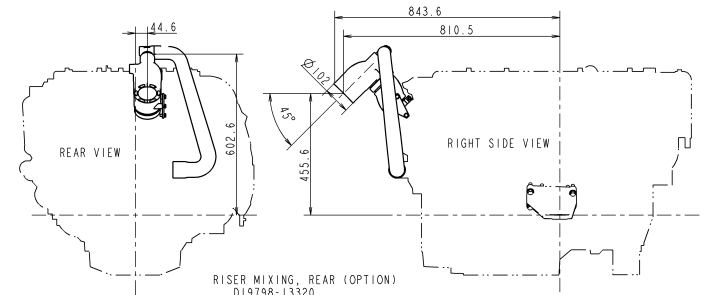
○ AND √: RADIAL



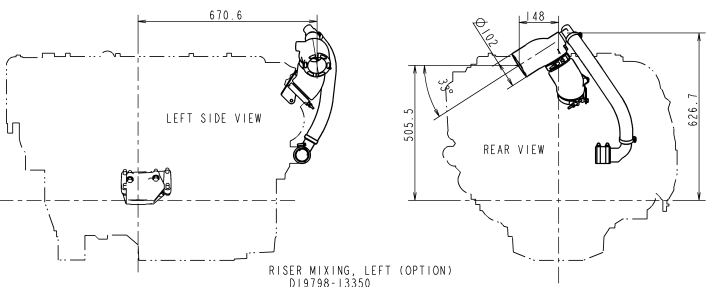
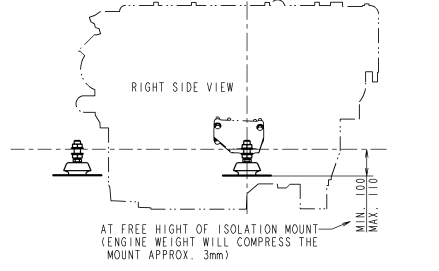
MIXING ELBOW (STANDARD)  
D19798-13310  
D19798-49570



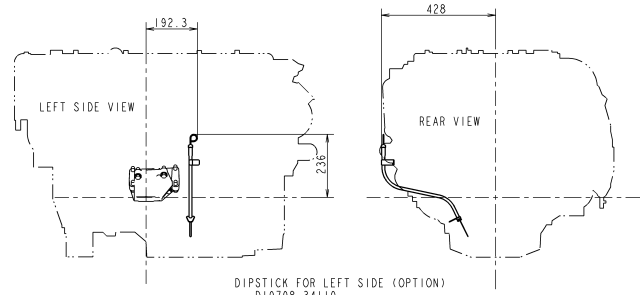
ISOLATION MOUNTS (STANDARD)  
D19798-08520



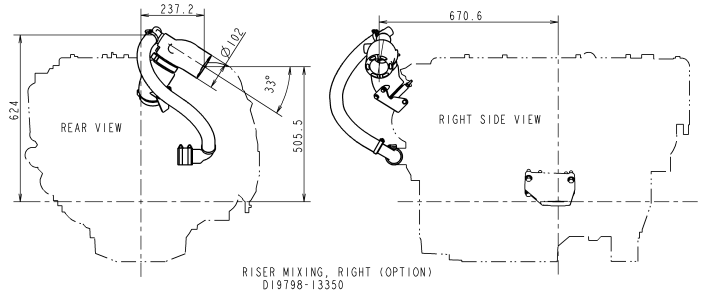
RISER MIXING, REAR (OPTION)  
D19798-13320  
D19798-49580



RISER MIXING, LEFT (OPTION)  
D19798-13350



DIPSTICK FOR LEFT SIDE (OPTION)  
D19798-34110



RISER MIXING, RIGHT (OPTION)  
D19798-13350

With respect to the use of environmentally hazardous substances for the parts, the substances in use shall conform to the requirement specified in JIS V-0001, "Restrictions of use for Environmentally Hazardous Substances".

3D-CAD	
NOTICE	3D-CAD
GEOMETRIC TOLERANCE	3D-CAD
SYMBOL	3D-CAD
PROJECTION	3D-CAD
SCALE	3D-CAD
UNIT	3D-CAD
DATE	3D-CAD
DESIGNER	3D-CAD
DRAWN	3D-CAD
CHECKED	3D-CAD
APPROVED	3D-CAD
DATE	3D-CAD
LOCATION	3D-CAD
DEPARTMENT	3D-CAD
COMPANY	3D-CAD

MASS, RAW	kg	(± 1)	MANAGER		
MASS, CALC.	kg	(± 1)	梶		
SEN. ENGINEER	SEC. MANAGER	MODEL	BLV 320	BLV 350	BLV 370
伊藤	藤沢	SCALE	1:10		
CHECKED	SPECIALIST	QTY	MATERIAL		
志賀	西條	8LV 12-12-12-12-12			
DESIGNED	DRAWN	DATE: Y. M. D	NAME		
宮崎		2009.11.13	8LV APPLICATION (2/2) OUTLINE DRAWING FOR OPTIONAL PARTS		
YANMAR			CODE	B2-19798-0020	
			YANMAR CO., LTD. DEVELOPMENT DEPT.		