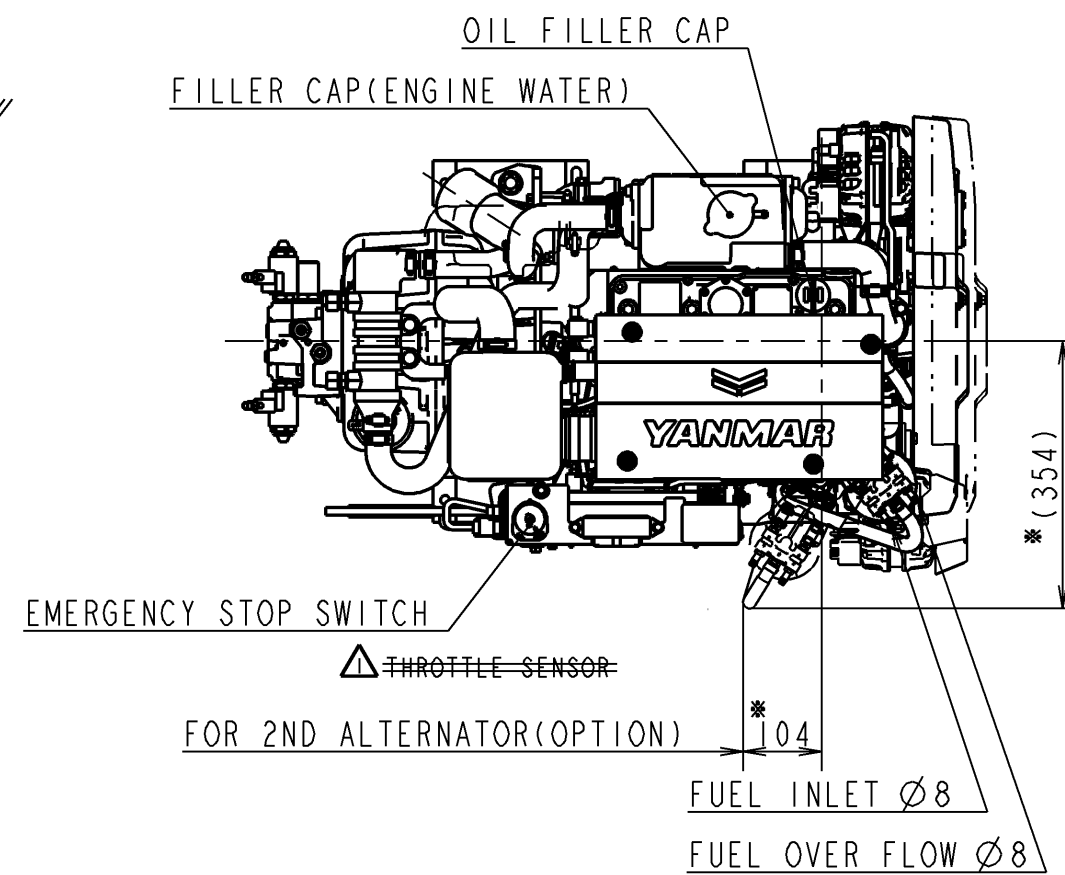
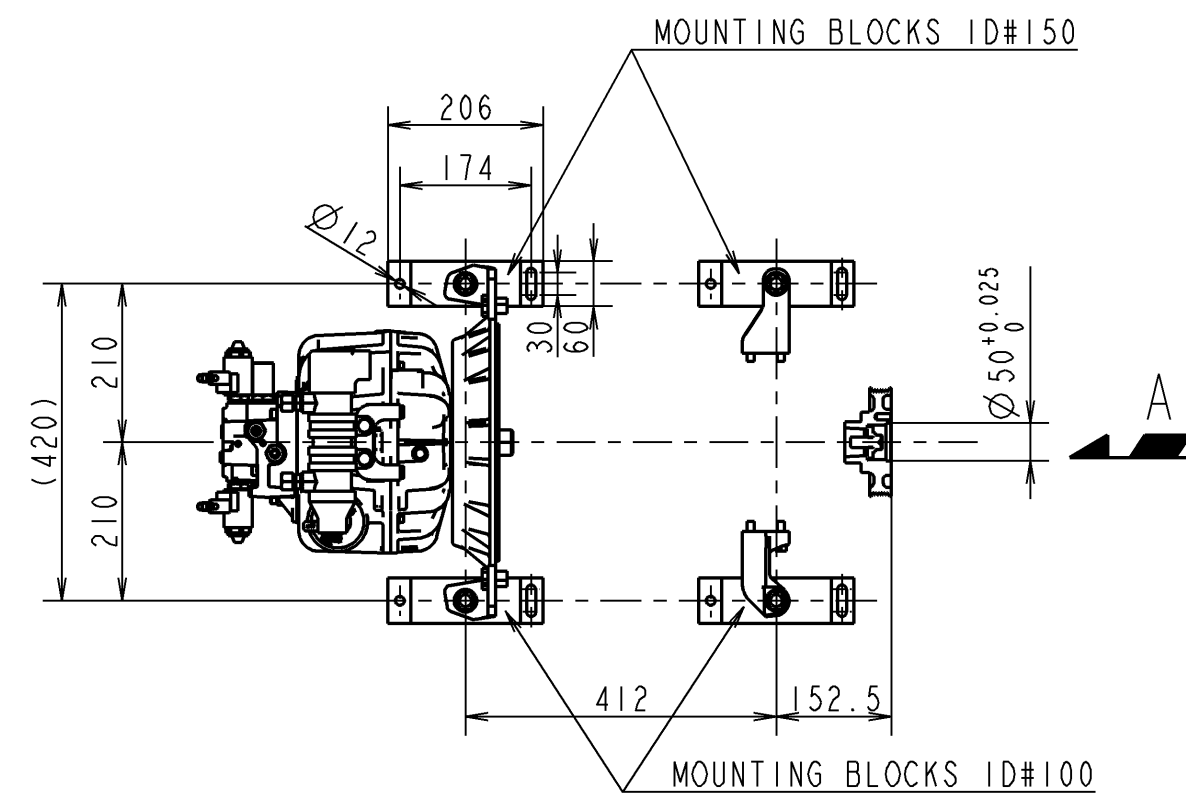


ARROW C



THROTTLE SENSOR
SCALE 1:5

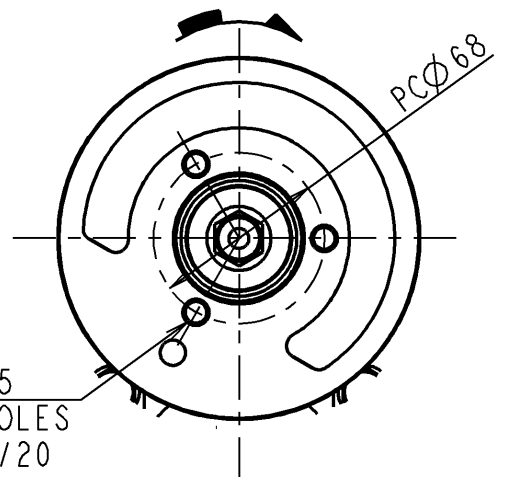


3xM10x1.5
TAPPED HOLES
DEPTH 14/20

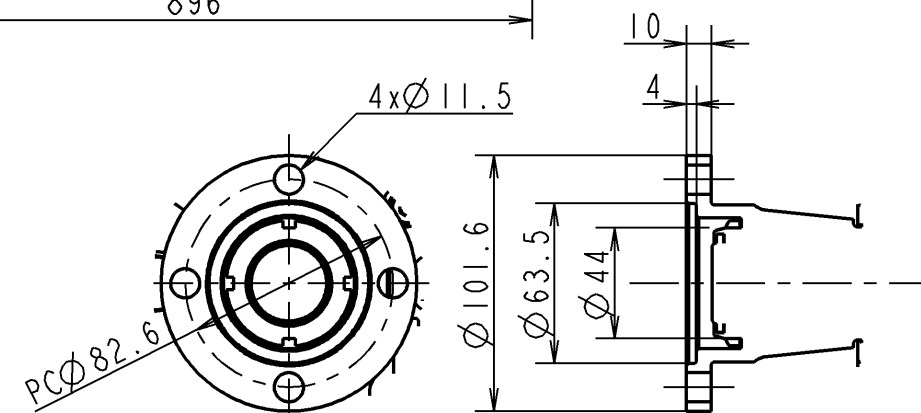
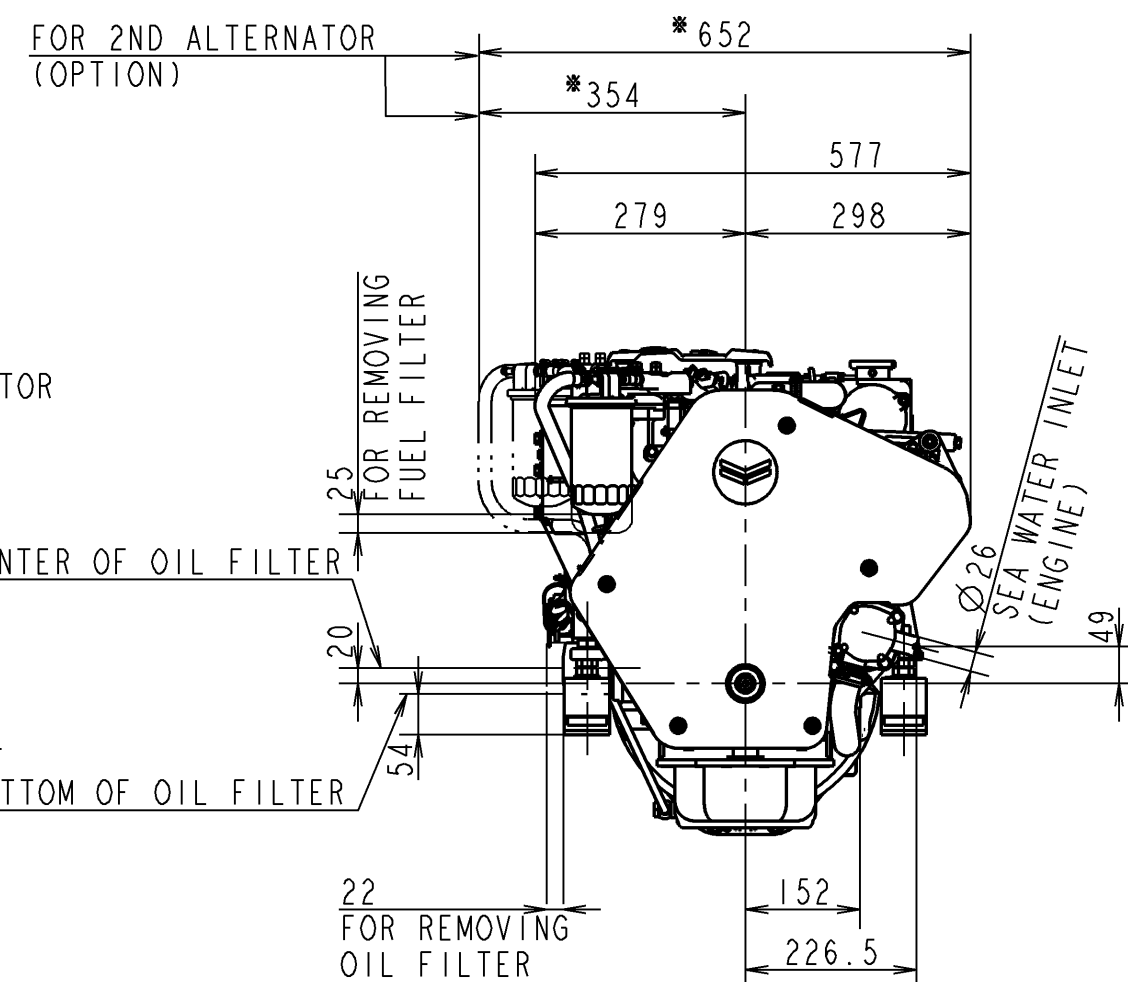
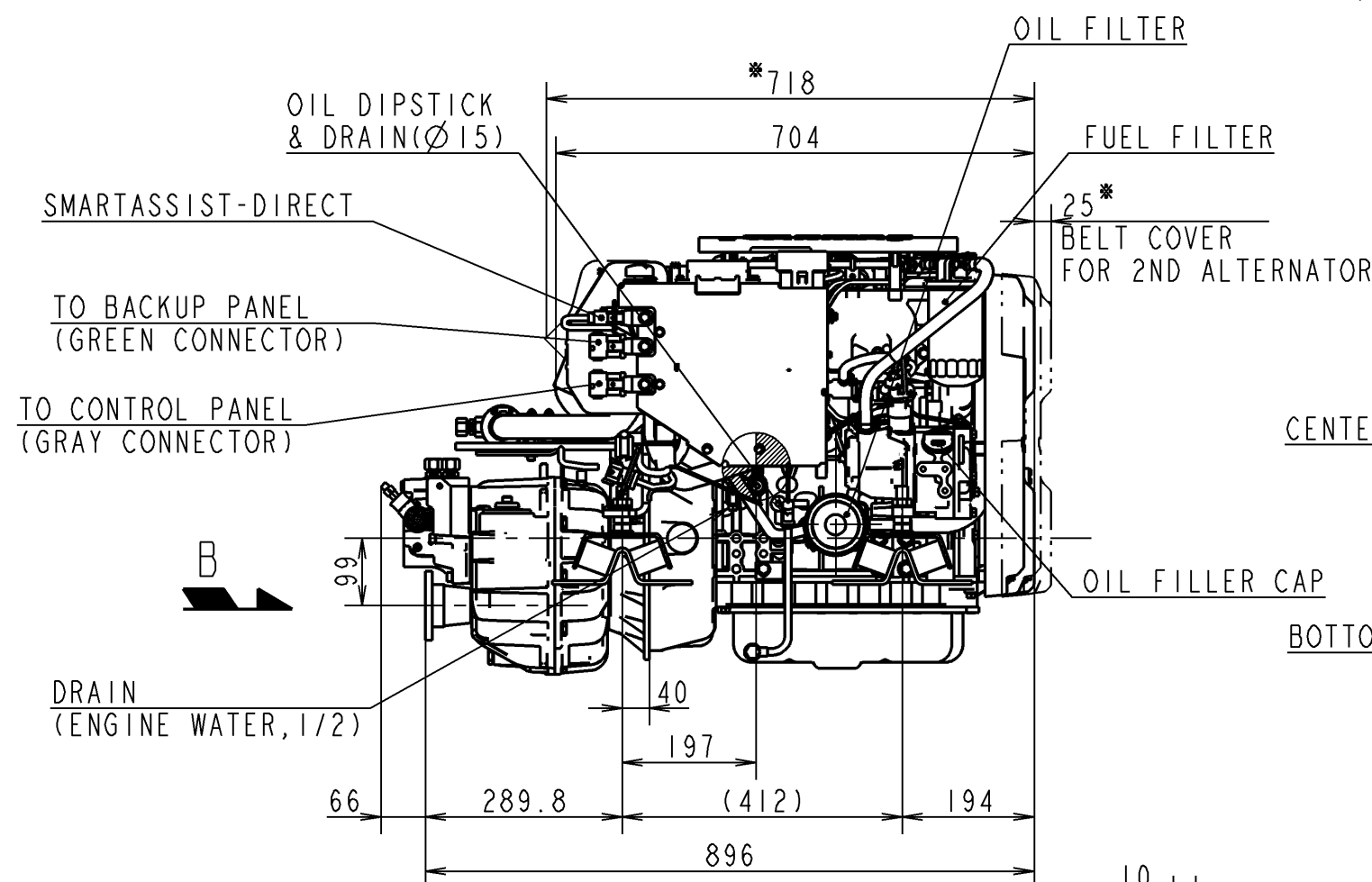
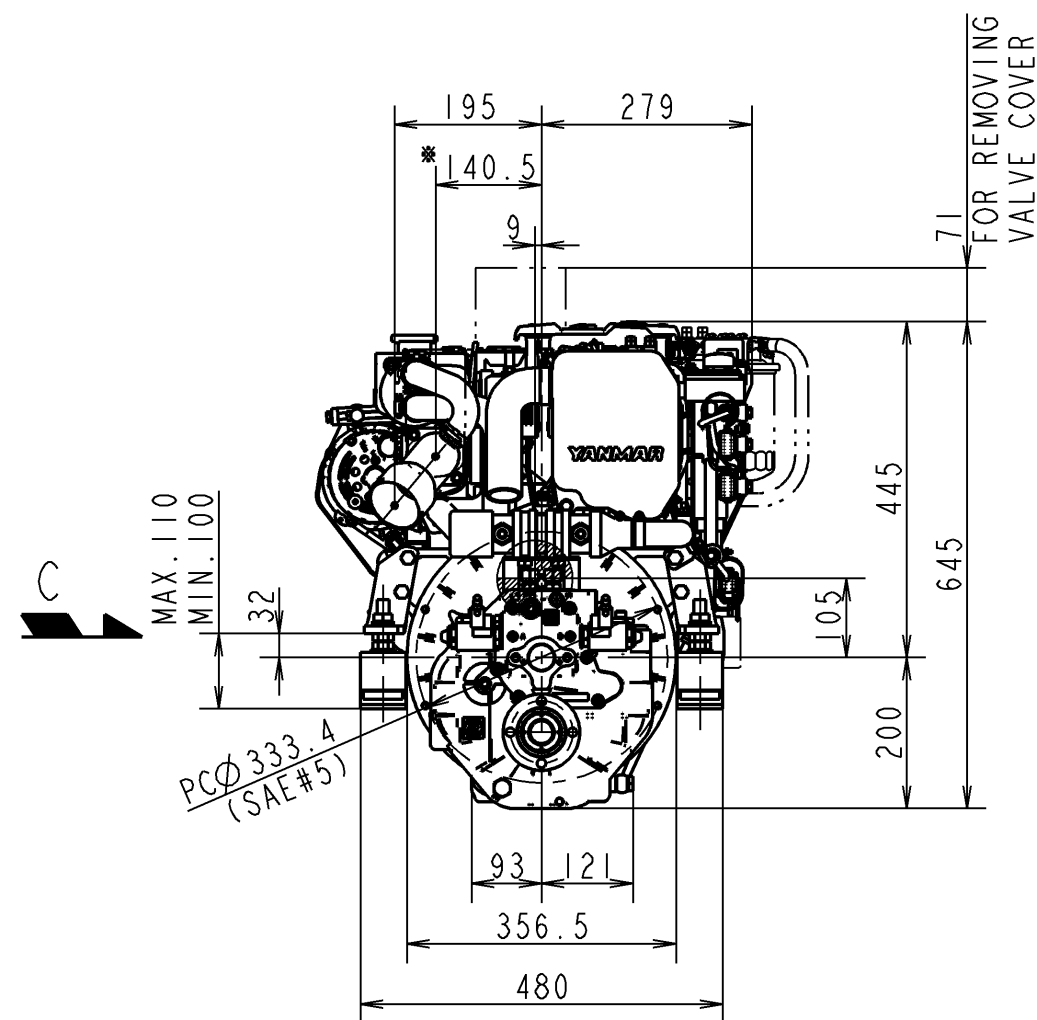
CAREER

(YDSBD-18022)
REV.1(2019.2.12)
DELETE THROTTLE SENSOR
(YDSBD-18025)(SHIGA)

DIRECTION OF ROTATION
(ENGINE)



DETAIL OF PULLEY
SCALE 1:3
ARROW A



DETAIL OF COUPLING
SCALE 1:3
ARROW B

量産用
FOR MASS PRODUCTION

MANAGER

11/口

NOTE
1. MOUNTING BLOCKS ARE COMPRESSED ABOUT 4mm BY ENGINE WEIGHT.
2. DIMENSIONS OF MOUNTING BLOCK IN THIS DRAWING ARE WITHOUT ANY DEFORMATION.
3. THE FIGURES MARKED WITH * SHOW THE DIMENSIONS WITH U-MIXING ELBOW OR OPTIONAL PARTS.
4. ● SHOWS THE CENTER OF GRAVITY.

SPECIFICATIONS				
Model		3JH40		
Continuous Power(ISO 8665)		kW/min ⁻¹		
		26.8 / 2907		
Fuel Stop Power	Propeller shaft(ISO 8665)	kW/min ⁻¹		

	Crankshaft(ISO 8665)	kW/min ⁻¹		
		29.4 / 3000		
Reduction ratio		1.97	2.80	---
Dry mass kg		Approx.225		
Direction of Crankshaft rotation		Counter-clockwise		

SEC.MANAGER 吉崎		MODEL		3JH 40		SCALE		1:10	
CHECKED 北本		SPECIALIST		QTY		-		MATERIAL	
DESIGNED K.SHIGA		DRAWN		DATE:Y.M.D 2018.11.9		NAME		3JH40xZF25-E-SHIFT	
YANMAR						CODE		REV. I	
YANMAR CO.,LTD. DEVELOPMENT DIV.						B2-29272-0090		DRAW SIZE A2	