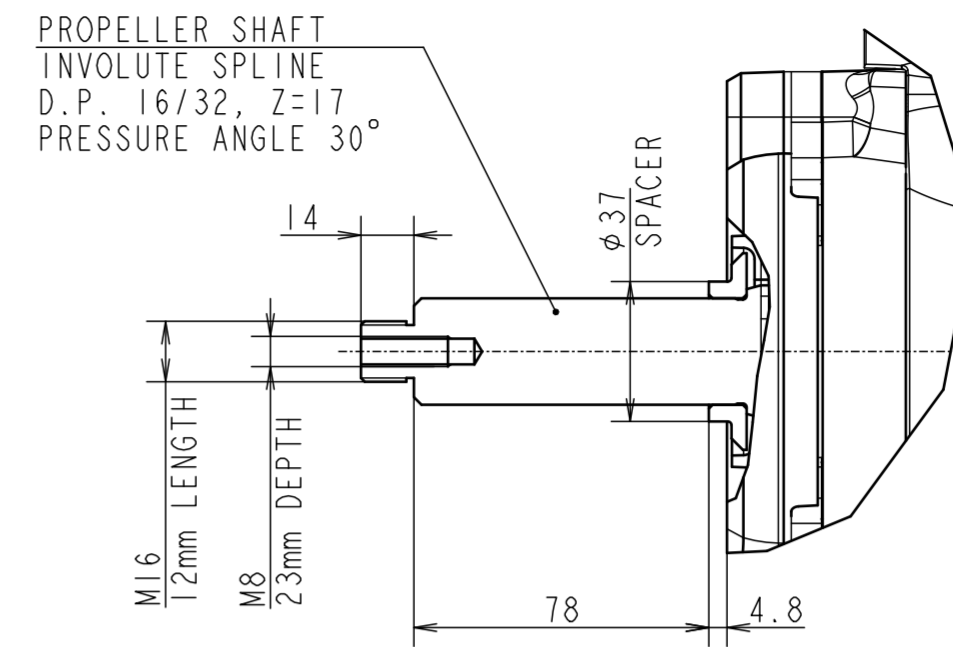
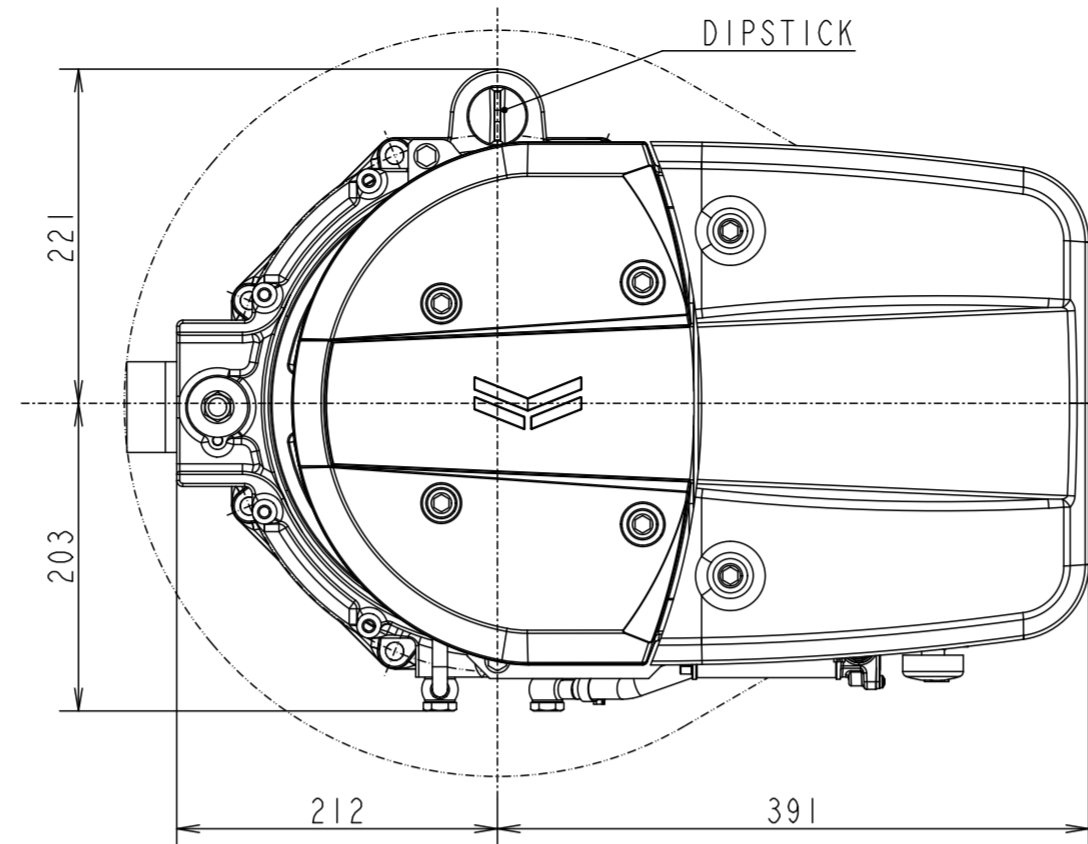
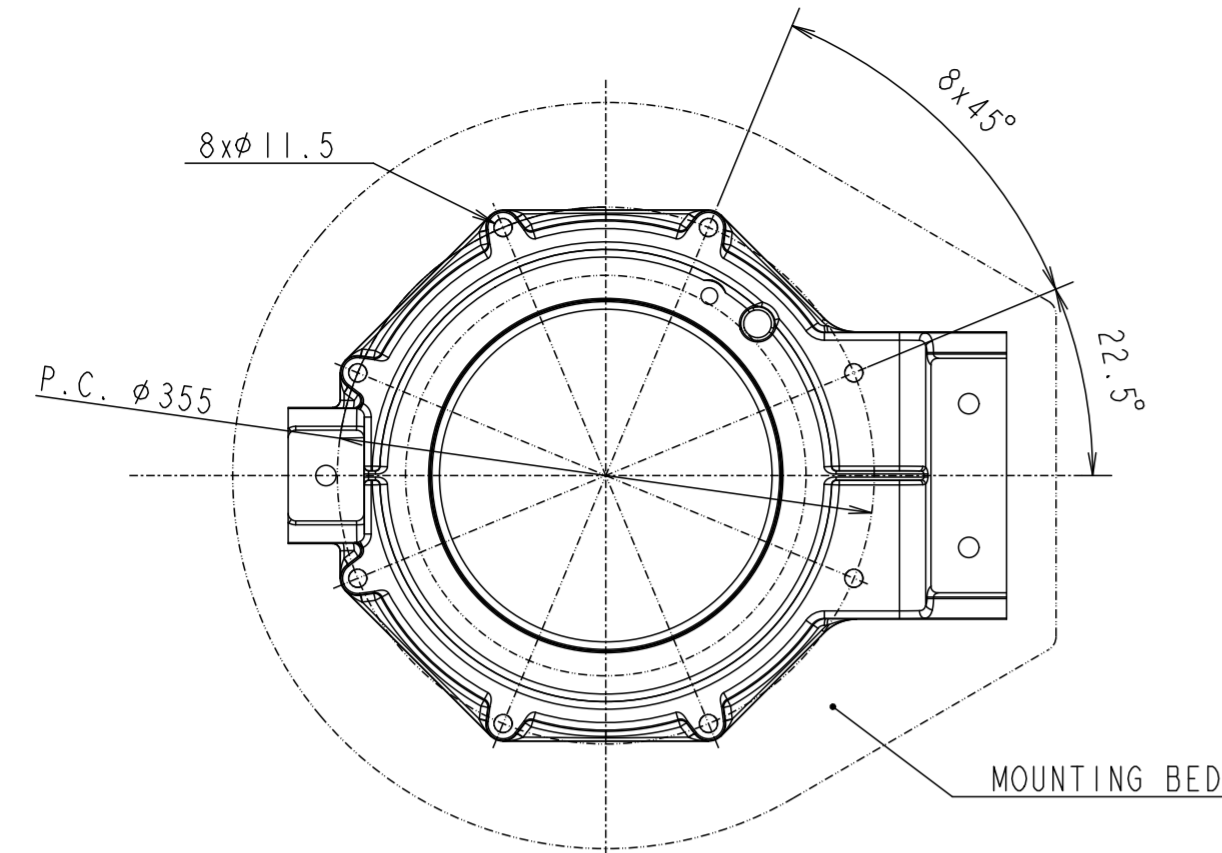
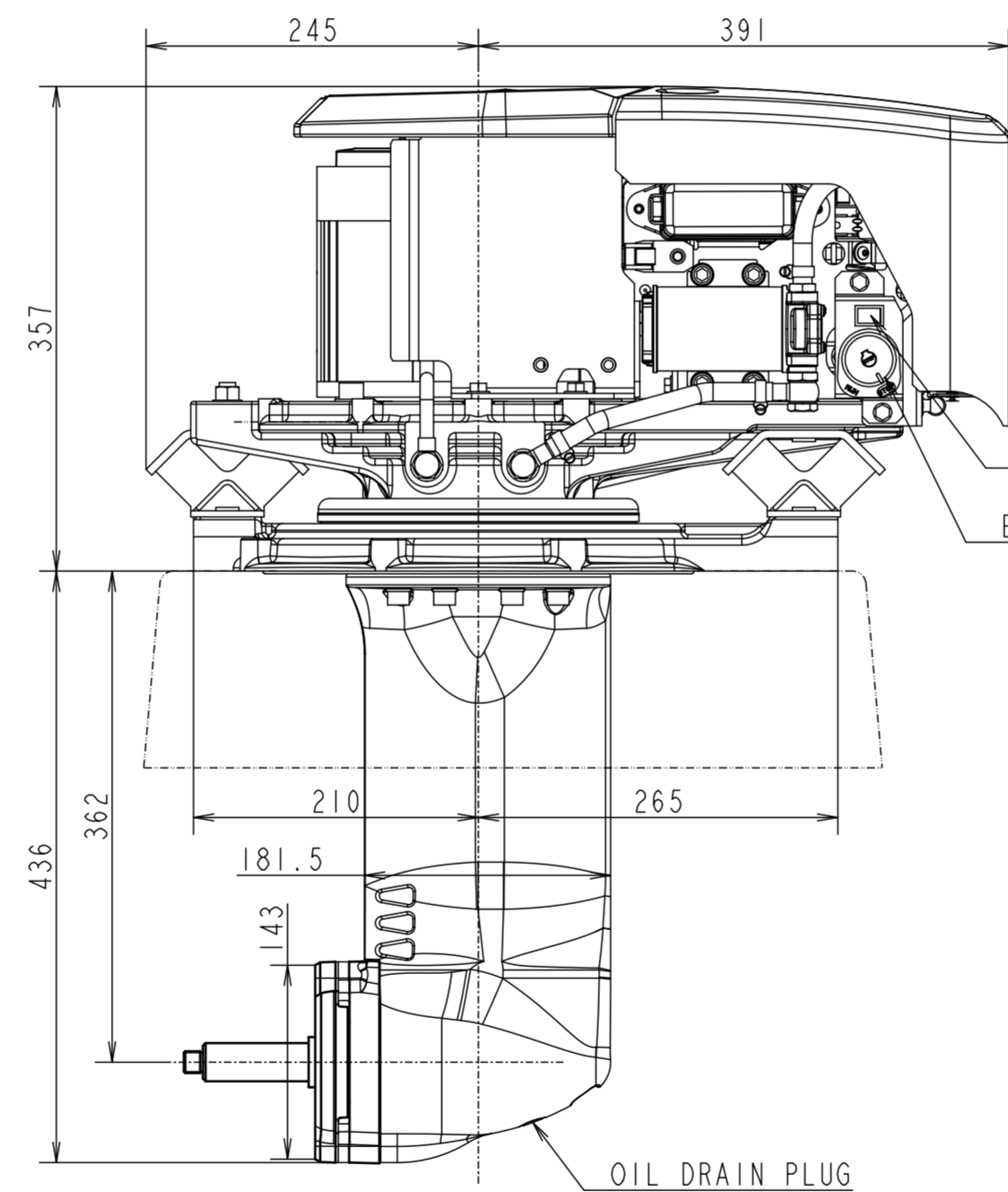
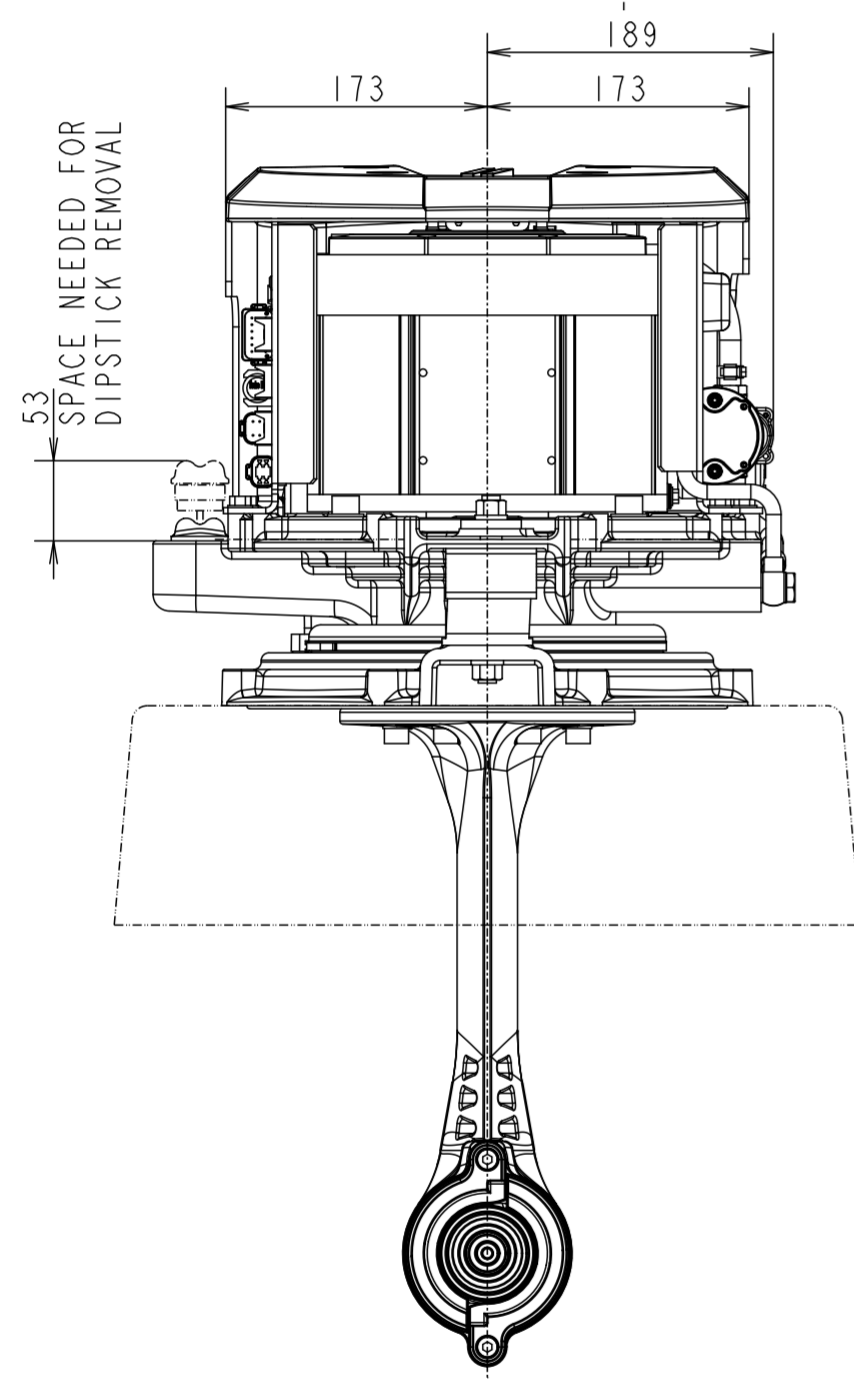


C A R E E R



PROPELLER SHAFT (NOT TO SCALE)

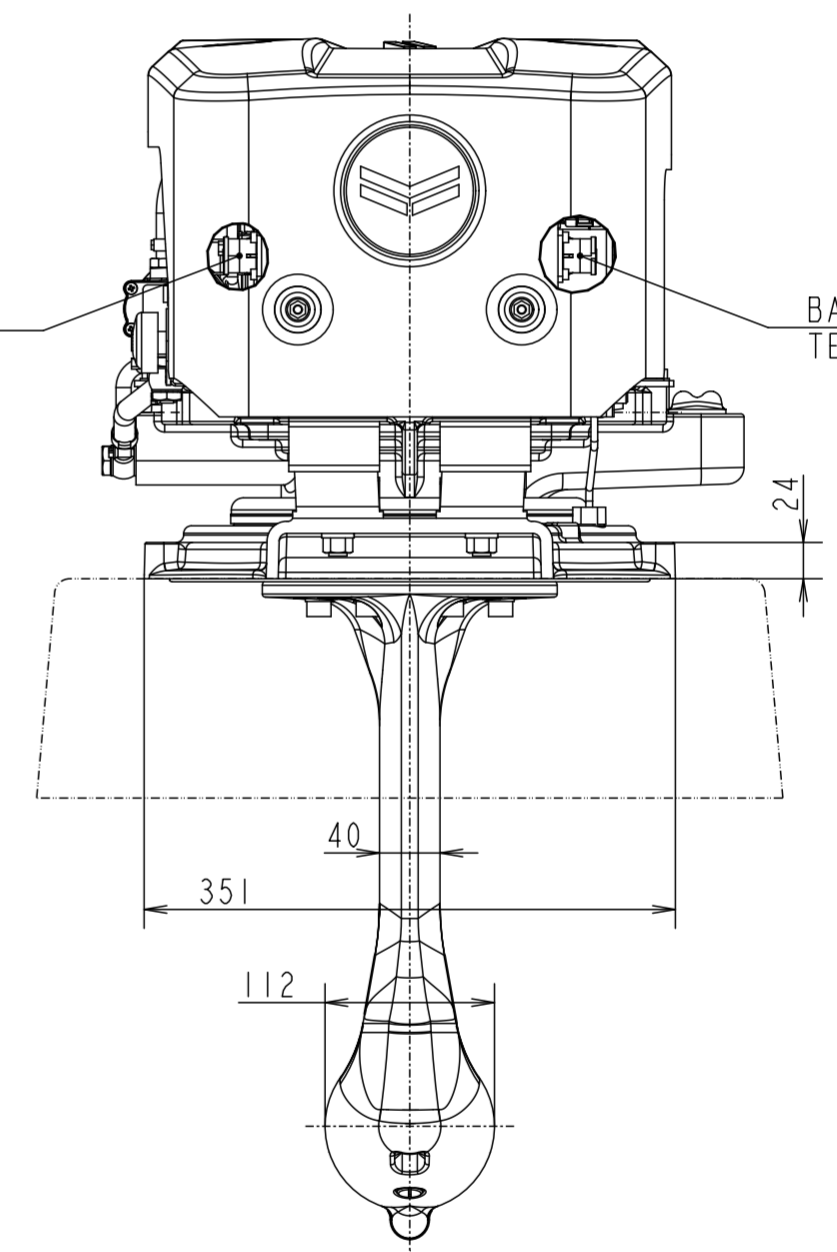


BATTERY POSITIVE TERMINAL

BATTERY GROUND TERMINAL

MANUAL PUMP SWITCH

EMERGENCY STOP SWITCH



先行手配用
FOR PRELIMINARY

MANAGER

TECHNICAL SPECIFICATIONS		
MODEL		ESD15
OUTPUT SHAFT POWER	kW/min ⁻¹	15 / 2700
REDUCTION RATIO		2.13
DRY WEIGHT	kg	77.0
OIL TYPE		ATF
OIL CAPACITY	L	3.5

SEC. MANAGER		MODEL	ESD15	SCALE	1:5
CHECKED	SPECIALIST	QTY	-	MATERIAL	-
DESIGNED	DRAWN	DATE: Y.M.D	NAME	ESD15 OUTLINE	
	lvdB	2024.04.18			
			CODE	B5-V5900-0010	DRAW SIZE
YANMAR MARINE INTERNATIONAL B.V.					A2

3D-CAD
NOTICE
GEOMETRICAL TOLERANCE
KIND OF TOLERANCE
SYMBOL
STRAIGHTNESS TOLERANCE
CIRCULARITY TOLERANCE
PROFILE OF LINE TOLERANCE
FLATNESS TOLERANCE
CYLINDRICITY TOLERANCE
PARALLELISM TOLERANCE
PERPENDICULARITY TOLERANCE
ANGULARITY TOLERANCE
POSITIONAL TOLERANCE
COINCIDENCE TOLERANCE
SYMMETRY TOLERANCE
STRAIGHT RUN-OUT TOLERANCE
TOTAL RUN-OUT TOLERANCE