



**YANMAR**

Power Tiller

**GT-1**



## ヤンマー株式会社

〒530-8311 大阪市北区茶屋町1-32  
YANMAR FLYING-Y BUILDING  
yanmar.com



このカタログの仕様は、改良などにより、予告なく変更することがあります。



この印刷物は  
植物油インキを使用しています。

### ⚠ 安全に関するご注意

- ご使用の際は、取扱説明書をよくお読みのうえ、正しくお使いください。
- 無理な運転は商品の寿命を縮め、故障・事故の原因となることがあります。
- 故障・事故を未然に防止するため、定期点検は必ずおこなってください。
- 保証書はご購入の取扱い店で必ずお受け取りください。

Sample

商品についてのご意見、ご質問は下記へ…



# YOUR BEST PARTNER **GT-1**

"POWERFUL" & "LOW FUEL CONSUMPTION"  
"GREAT QUALITY"  
"DURABILITY"  
GT-1 meets your expectation.



MORE DETAIL



**NEW  
DESIGN**



**DISC PLOW**



**BOTTOM PLOW**



**RUBBER TIER & TRAILER**



**PADDLER**



**POWER &  
ECOLOGY**

JAPAN BRAND YANMAR  
WITH ASIAN PEOPLE  
MORE THAN 70YEARS.





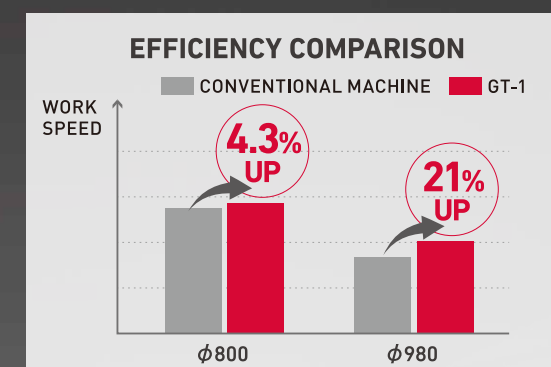
**TF90N** / Diesel 493cc  
MAX 9PS

**TF120N** / Diesel 638cc  
MAX 12PS

**TF150N** / Diesel 716cc  
MAX 15PS

# HIGH PERFORMANCE

Maximum 15PS ENGINE acceptable.  
Balance powerfulness and  
low-fuel consumption.  
Comfortable operation.

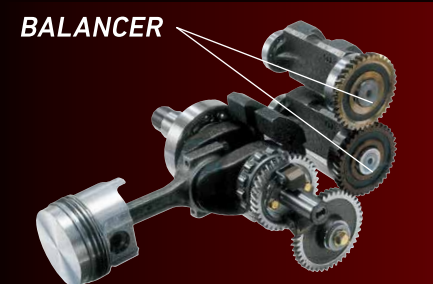


## POWERFUL, LOW FUEL CONSUMPTION, LONG LIFE



### POWERFUL, LOW FUEL CONSUMPTION, LONG LIFE

YANMAR's leading direct fuel injection system has greatly reduced the specific fuel consumption ratio.



### LOW VIBRATION

YANMAR's unique two-balancer shaft eliminates resonance by reducing both acceleration and amplitude. The imbalance is internally absorbed and as a result, vibrations are reduced at their source.



### LARGE SIZE SILENCER

A large size silencer is adopted.

## CONFORTABLE WORK, EASY MAINTENANCE



### VISIBLE OIL/WATER SEPARATOR

An oil/water separator provided on the filter bowl allows at a balance checking of the water volume deposited in the filter. A separator with one-touch type automatic air bleeder allows air bleeding by simple lever operation. No fuel spillage, and no tools are required.



### OIL SIGNAL

Oil signal color changes allow easy checking to see if lubrications oil pressure is normal.

**BLUE** : Normal pressure  
**RED** : Abnormal pressure



### EASY ADJUST

Adjustable V-belt tension without tools.



### OIL-BATH TYPE AIR CLEANER

The oil-bath type air cleaner is adopted. Any fine dust is not missed and pure air is supplied.



# HIGH OPERABILITY

Great operability to create high efficiency work

MAIN SHIFT LEVER



MAIN CLUCH LEVER



TOOL BOX



ADJUSTABLE TREAD



TH-A(KH,MM)  
1055,1105,1155,1205  
TH-B,TH-C  
1215,1265,1315

HEAD LIGHT SWITCH

The head light can be lit within a hands reach.  
High/low beam can be switched as well.

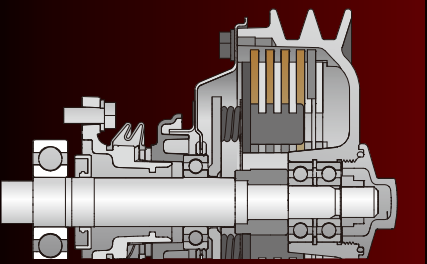


ASSIST CLUCH LEVER

You can declutch from under handle when the handle lifts up.



## FOR YOUR HEAVY WORK



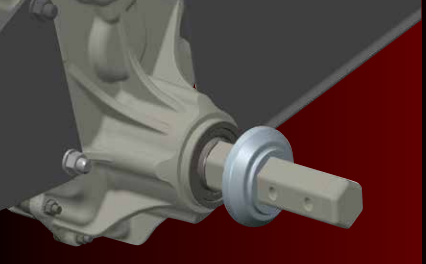
TRANSMISSION CAPABILITY

4 friction plates use.



FOR LONG LIFE

Transmission case FCD  
High durability bearing.



HIGH WATER PROOF

Oil seal & seal cap.

### GT-1 Specifications

Model name				GT-1							
Specification				TH-A(KH,MM)		TH-B		TH-C			
Body dimensions	Total length			(mm)		3055					
	Overall width			(mm)		1055-1205		1215~1315			
	Overall height			(mm)		1225		1265		1315	
mass (without engine)				(kg)		215		234		252	
Engine		Applying horsepower				~15HP					
Travering portion	Wheel (diameter X wides)			(mm)		800 X 275		880 X 320		980 X 320	
	Diameter of engine pulley			(in.)		5.5		4.0			
	V-Belt		Size		B72		B70				
			Length		(in.)		72		70		
			Quantity		(pcs)		2				
	Speed traversing at Engine speed 2400rpm (km/h)		With AG-Tire size 5-12		F1		5.1		3.6		
					F2		9.6		6.8		
					F3		24.2		17.0		
					R1		3.7		2.6		