



PRODUCT CATALOG



"Isa sa mga hanap-buhay dito sa aming lugar ay ang pagsasaka. Kumuha ako ng Yanmar tractor para sa aming lupa at para na din pang-negosyo dahil pinapaupahan ko ito para makatulong na din sa ibang farmers dito. Malaking tulong ito sa amin, lalo na kung income ang pag-uusapan. Matipid sa diesel at napakalakas ng makina. Bilib ako sa performance ng Yanmar tractor."

NATHANIEL MABBORANG
Yanmar Certified User
Anilao Bongabong, Oriental Mindoro
on using Yanmar EF514T

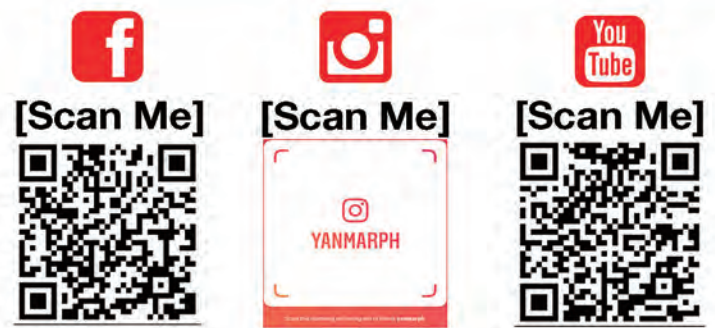


DEALER OUTLETS

- | | | |
|------------------------------|--------------------------------------|----------------------------------------------------------|
| 1. Tuguegarao | 11. Pulilan, Bulacan | 21. Bacolod, Negros Occidental |
| 2. Naguilian, Isabela | 12. Naga, Camarines Sur | 22. Ilocos Sur |
| 3. Cauayan, Isabela | 13. Calapan, Oriental Mindoro | |
| 4. Santiago, Isabela | 14. Jaro, Iloilo | and soon to open branches! |
| 5. Solano, Nueva Vizcaya | 15. Sara, Iloilo | |
| 6. Muñoz, Nueva Ecija | 16. Palo, Leyte | Visit our social media accounts to |
| 7. Cabanatuan, Nueva Ecija | 17. Matina Pang, Davao | get updated on the latest news. |
| 8. San Leonardo, Nueva Ecija | 18. Koronadal, South Cotabato | www.yanmar.com/ph |
| 9. Urdaneta, Pangasinan | 19. Cagayan De Oro, Misamis Oriental | |
| 10. Tarlac, Tarlac | 20. CARAGA Region | |

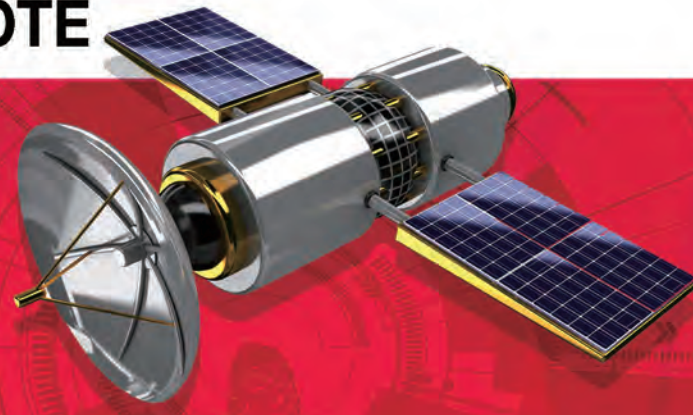


YANMAR is a Japanese company with 100 years of history in building diesel engines. It has since grown to be a global leader in production of agricultural machinery, industrial diesel engines, engines for marine and pleasure boats, construction equipment and energy systems. With presence in over 66 countries, YANMAR enters the Philippines in joining the nations to redefine the agricultural industry and provide sustainable future for all the Filipinos.



SMARTASSIST

REMOTE

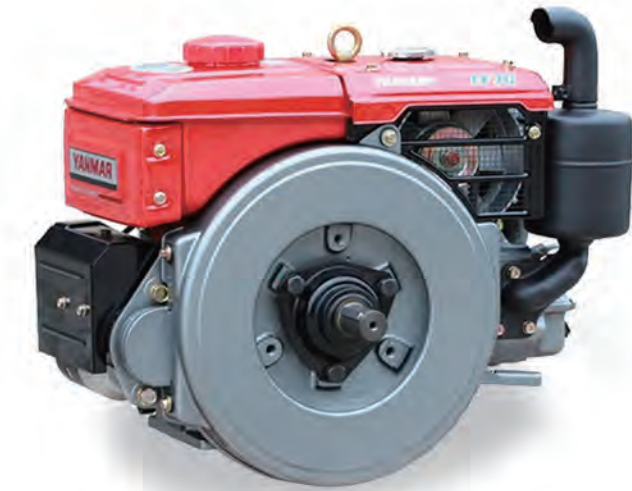


Agricultural Machinery is now equipped with Advanced Technology

Yanmar **SMARTASSIST** is the revolutionary service with GPS. Be secure in just one click!

Easy check with the use of Smart phone, Tablet or Computer

HORIZONTAL DIESEL ENGINES



TF120N / TF90N

TF70

SPECIFICATIONS

Model	Unit	TF120N	TF90N	TF70
Type		Horizontal, 4-cycle water-cooled diesel		
Combustion chamber		Direct injection		
Number of cylinders		1		
Bore x stroke	mm	92X 96	85 X 87	78 X 80
Displacement	L	0,638	0,493	0.382 litres
Rated power	kW{PS}/min ⁻¹	7.7{10.5}/2400	6.0{8.0}/2200 [5.5{7.4}/2200]	6.0 / 2400 (4.5)
Maximum power	kW{PS}/min ⁻¹	8.8{12.0}/2400	6.7{9.0}/2200 [6.3{8.4}/2200]	2.48 / 1800
Compression ratio		17.7/16.3	17.9/16.5	18.1
Fuel injection timing	FID deg	17,0	18,0	17,0
Fuel injection pressure	MPa{kgf/cm ² }	19.6{200}		
Engine weight	Dry kg	108	90	68
	Equipped kg	123	104	69
PTO location/direction of rotation		Flywheel / counterclockwise		
cooling system		Liquid-cooled with radiator		
Lubrication system		Forced lubrication with trochoid pump		
Starting system		Manual starting system		
Engine dimension	length mm	784	703,5	607.5
	height mm	530	505	469
	width mm	377	376	312
Lubrication oil capacity	L	2,8	2,2	1.8
Fuel tank capacity	L	11.6/11.9		7.1
Cooling water capacity	L	2,3	1,65	1.25
Balancer		With 2-shaft balancer		
Lamp		with Lamp		without Lamp

Note: Specifications are subject to change without prior notice.

SMARTASSIST monitors the machine's condition and operation using GPS technology.

With **SMARTASSIST SERVICE**, machine condition, operation and maintenance requirements can be checked online.

Monitors the conditions of the machines
Receives the alerts

Informs and alerts for maintenance schedule

SMARTASSIST website
Yanmar proposes periodic maintenance and provides timely support during alarms.

A Machine Location and Operating times
Monitor operations without going out to the field.

B Work Tracking
Track daily operating times and field operations easily.

C Operating Times (Monthly, Annually, or per worker)
Distribute human resources efficiently.

D Field Size Measurement
Computes field size for better work planning.

E Theft Deterrence Alerts
Respond quickly against theft. *This does not guarantee theft prevention.

F Error History
Prevents predictable machine downtime and resolves the problem quickly.

*Operating times for the above systems are for when the key switch is turned on.

Check anytime, anywhere!

With just one click using your smartphone, tablet or computer, you can easily access and monitor your machine anytime, anywhere.



TO KNOW MORE ABOUT YANMAR SAR (SMARTASSIST REMOTE), ITS USE AND HOW IT WORKS, PLEASE REFER TO YOUR SMARTASSIST OPERATION MANUAL.

TRANSPLANTERS

AP4

VP6D



YM TRACTOR SERIES



YM351A



YM371A



YM351A / YM357A



**SMARTASSIST
READY**
Check your machine
ANYTIME,
ANYWHERE

SPECIFICATIONS

MODEL			AP4	VP6D	
DIMENSION	LxWxH	mm	2190 x 1500 x 1034	3290 x 2595 x 2330	
WEIGHT		kg	145	755	
ENGINE	Model		MZ175	3TNM72-CUP2	
	Type		AIR-COOLED, 4-CYCLE, OHV GASOLINE	WATER COOLED, 3 CYLINDER	
	Displacement	CC	171	903	
	Max Output	KW(PS)	2.6 (3.5)	15.4 (20.9) / 3200	
	Fuel		GASOLINE	DIESEL	
	Fuel Tank Capacity	L	4	37	
TRAVELING SECTION	Tread	MM	620	1200	
	Wheel Diameter	MM	660	950	
	Shifting	FORWARD	2 STEPS	2 STEPS	HMT (non gear stage transmission)
		REVERSE	1 STEP	1 STEP	
Speed (Slip Ratio 0%)	TRANSPLANTING	M/S	0.38-0.76	0-1.65	
	TRAVELING	M/S	0.72-1.54		
TRANSPLANTING SECTION	Number of Rows	ROW	4-ROWS TYPE	6-ROWS TYPE	
	Planting Width	CM	30	30	
	Planting Pitch (Slip Ratio 0%)	CM	22, 17, 15, 12	28, 20, 17, 15, 12	
	Planting Hill	NUMBER / 3.3M2	50, 65, 75, 90	40, 55, 65, 75, 90	
	Planting Depth / Stage	MM	15-40/6 STAGES	15-60 (7 STAGES)	
Leveling Control	AUTOMATIC LEVELING CONTROL				

SPECIFICATIONS

Model		YM351A	YM357A		
Engine	Maker	YANMAR			
	Model	4TNV88	4TNV94L		
	Type	4 Cylinders, Direct Injection, Vertical, Water-Cooled, Diesel			
	Total Displacement	L	2.190	3.054	
	Gross Power	kW (HP) / rpm	38.0 (51.0) / 2800	42.4 (57.0) / 2400	
	Fuel Tank	L	50		
Dimensions	Overall Length (without 3-point hit)	mm	3330	3380	
	Overall Width	mm	1580		
	Overall Height	mm	2570		
	Wheel Base	mm	1900	1970	
	Min. Ground Clearance	mm	425		
	Tread	mm	Front : 1252 (Standard) / 1404	Rear : 1238 (Standard) / 1320	
Weight	kg	1680	1790		
Traveling System	Tire	inch	Front : 8 - 18	Rear : 13.6 - 26	
	Clutch	Dry, Single			
	Brake	Mechanical, wet disk			
	Steering	Hydrostatic power			
	Main shift	synchronized (4stage)			
	Reverser	synchronized Reverser			
	Number of shift	8 forward and 8 reverse			
	Travel speed	Forward	km / hr	2.4 - 28.0	2.6 - 29.4
		Reverse	km / hr	2.4 - 28.0	2.6 - 29.3
Hydraulic Unit	3-Point Hitch	Category 1			
	Max. Lift Force	at lower link end	kN (kgf)	14.2 (1450)	
Power Take off (PTO)	Type	independent			
	Gear1	PTO speed / engine rpm	540 / 2430	540 / 2096	
	Gear2	PTO speed / engine rpm	740 / 2417	740 / 2064	

Specifications are subject to change without prior notice

EF TRACTOR SERIES



EF393T



EF514T



AW70V



AW82V

COMFORTABLE OPERATION

BEST REAPING PERFORMANCE

ADVANCED SORTING with TWIN THRESHING SYSTEM

HIGH GROUND CLEARANCE

327 mm



Versatility and Powerful Performance in Operation

FRONT BLADE

Easy to Use and Improved Dozer Operation
Easier Blade Leveling and More Power by Front Blade
Arm Connecting Point moved towards Rear Wheel

DISC PLOUGH

With 3 Rings, Powerful Rotating Performance

POLY PLOUGH

With 7 Rings, More Efficient Operation

ROTARY TILLER

2.2m Width
Improve Productivity and Working Quality



SPECIFICATIONS

Model	YH700, PH	YH700G	YH850, W-PH	YH850G	AW70V	AW82V	
Type	Top sacker w Steering Wheel	Grain tank w Steering Wheel	Top sacker w Steering Wheel	Grain tank w Steering Wheel	Top sacker		
Combine dimensions	Total length	5,070		5030			
	Total width	2,285		2285			
	Total height	2,930	2,820	2,930	2,820	2905	
Combine weight	2,930	2,820	2,930	2,820	3,160	3,180	
Engine	Model	4TNV98		4TNV98T		4TNV98	
	Type	Water-cooled 4-cycle 4-cylinder vertical diesel					
	Total displacement	3318					
	Output kW (PS) /	51.5 (70.0) / 2,500		62.1 (84.5) / 2,500		70/2500	82/2400
	Fuel used	Diesel light oil					
Fuel tank capacity	115					90	
Driving part	Crawlers Width x Length mm (on ground)	500 x 1,700	500 x 1,750	550 x 1,700	550 x 1,750	500 x 1,700	
	Gear shift method	HST with hydraulic servo, mechanical FDS				HST with Hydraulic Side Clutch	
Number of transmission gears	3						
Travel speeds (at rated enginespeeds)	Low speed: 0 to 0.88	Low speed: 0 to 1.00		Lower: 0-0.93, Standard: 0-1.50, Fast: 0-1.85		Lower: 0-0.95, Standard: 0-1.55, Fast: 0-1.91	
	Standard: 0 to 1.37	Standard: 0 to 1.55					
	High speed: 0 to 1.85	High speed: 0 to 2.09					
Minimum ground clearance	420 (Center of transmission)	330 to 460 (Center of transmission)	420 (Center of transmission)	330 to 460 (Center of transmission)	327 (Center of transmission)		
Header	Interval between divider edges	2060					
	Header device type	Reel + Platform					
	Cut width	1975					
	Cut height range	-50 to 1,000					
	Reel diameter x width	900 x 1,920					
Rotation speed	43 (37)						
Thresher / sorter	Type	Axial-flow bar type with vertical front rotor				Twin Rotor System	
	Rotor Diameter x length	640 x 1,850					
	Sorting method	Vibratory motion, winnower, reprocessing					
	Sorter width	850					
	Sorting plate width x length	850 x 1,410					
Grain processor	Concave area	1.75					
	Grain processing method	Top sacker	Grain tank	Top sacker	Grain tank	2 grain outputs	
	Tank or hopper capacity	490	1,670	490	1,670	490	
	Discharge height	1,049 to 4,372		1,049 to 4,372			
	Discharge length	2,880		2,880			
Discharge time	1 minute 50 seconds		1 minute 50 seconds				

COMBINE HARVESTERS



YH700 / YH700G



YH850 / YH850G



EF725T with front blade attached



EF393T



EF514T



EF725T

EF725T

**SMARTASSIST
READY**
Check your machine
ANYTIME,
ANYWHERE

SPECIFICATIONS

	EF393T,S-PH	YANMAR EF514T,PH	EF725T,PH
Driving system	4WD drive	4WD drive	4WD drive
Engine system			
Engine	Yanmar diesel engine direct injection , 3 cylinders 4 stroke cycles, water cooling	Yanmar diesel engine direct injection , 4 cylinders 4 stroke cycles, water cooling	Yanmar diesel engine direct injection , 4 cylinders 4 stroke cycles, water cooling
Series	3TNV88	4TNV88	4TNV98-NRY1C
Engine gross power (PS)	39.0	51	72
PTO power (PS)	32.0	43	62.5
Bore and stroke (mm)	88x90	88x90	98x100
Total displacement (cm ³)	1,642	2,190	3,319
Rated speed (rpm)	2,800	2,800	2,500
Maximum Torque (Nm)	102.3 ~ 111.4 @1,680rpm	137.8 ~ 150.1 @1200rpm	
Battery	12V/52Ah	12V/52 Ah	12V/72 Ah
Fuel tank capacity (l)	38	40	70
Travelling system			
Standard tire size	Front Tire (inch) 12.4 - 24 Rear Tire (inch)	8 - 18 13.6 - 26	9.5 - 24-6 16.9-30-8
Main gear shift	Constantmesh	Constantmesh	Synclomesh
Shuttle shift	Magic Synchronate Reverser	Collar shift reverser	Synclomesh
No. of speed	8 Forward, 8 Reverse	9 Forward, 9 Reverse	8 Forward, 8 Reverse
Steering	Hydrostatic power steering	Hydrostatic power steering	Hydrostatic power steering
Brake	Wet disc type	Wet disc type	Wet disc type
Clutch	Dry single plate	Dry single plate	Dry single plate
4WD system	Bevel gear straight teeth	Bevel gear spiral teeth	Bevel gear spiral teeth
Min. Turning radius (m)	2.4	2.5	3.5
Travelling speed	Forward (km/h) 1.9 - 21.1 Backward (km/h) 1.8 - 20.5	1.6 - 28.8 1.7 - 29.7	2.9 - 31.8 3.0 - 32.4
PTO			
Type	SAE 1-3/8 inch , 6 spline groove	SAE 1-3/8 inch , 6 spline groove	SAE 1-3/8 inch , 6 spline groove
PTO/Engine speed (rpm)	540/2,590 750/2,510	568/2,800 769/2,800	540/2409 720/2287
Hydraulic			
Lift control type	Position control	Position control	Position control / Draft control
3-point hitch	SAE, category 1	SAE, category 1	SAE, category 2
Lift capacity at lift point (kg)	925	1,350	2,400
Dimensions & Weight			
Weight (tractor only) (kg)	1,090	1,540	2,250
Length (front bracket to rear tire) (mm)	2,940	3,230	3,670
Width (end of rear tire tread) (mm)	1,430	1,605	1,865
Wheelbase (mm)	1,650	1,830	2,050
Height (ground to ROPS) (mm)	1,960	2,355	2,600
Min. ground clearance (mm)	390	375	450
Tread	Front tire (mm) 1,065 Rear tire (mm) 1,120	1,300 - 1,466 1,270 - 1,334	1420, 1535 1,400, 1,500, 1,615, 1,725

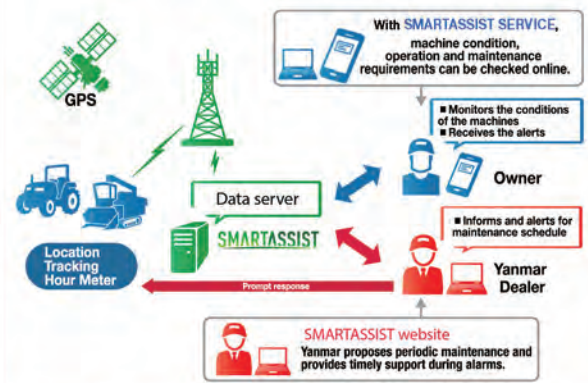
Specifications are subject to change without prior notice

**MAXIMIZES
WORK AREA, WORK
EFFICIENCY, AND
WORK TIME**



VERSATILE! SUITABLE FOR RICE & CORN

SMARTASSIST REMOTE



Check anytime, anywhere!

With just one click using your smartphone, tablet or computer, you can easily access and monitor your machine anytime, anywhere.



YANMAR IMPLEMENTS

CORN ROTARY SEEDER



PSC-3

- 1. Rotary plowing, seeding, fertilization completed in one step!
- 2. Improve germination rate by keeping moisture in the soil and making optimum seeding bed.
- 3. The seeding depth is stable and uniform growth can be expected.

FRONT DOZER

Model Name	Weight (kg)	Blade Width (mm)	Blade Height (mm)	Tractor	Front Weight (kg; Option)
Y1600FBS	270	1600	480	EF393T	N/A
Y1800FBS,H	379	1800	485	EF494T/514T	N/A
Y2100FBS	540	2133	520	EF725T	Up to 240

ROTARY

Model Name	Width x Length x Height (mm x mm x mm)	Weight (kg)	Width of Area Work (mm)	Side Drive	Type of Blade	Quantity of Blade (pieces)	Category	For Use	Horse Power (PS)
RH170	845 x 1875 x 1030	300	1665	The side chain	C	48	SAE #1	Paddy (Dry)	35 - 51
RH190	845 x 2075 x 1030	325	1870			54			
Y2200RHS	2575 x 780 x 1130	458	2150	Gear		66	SAE #2	Paddy	72

DISC PLOW

Model Name	Disc size (inch)	Quantity of disc (pieces)	Width x Length x Height (mm x mm x mm)	Weight (kg)	Working Width (mm)	Working Depth (mm)	Working Speed (km/hr)	Category	For soil	Horse Power (PS)
Y2240DPL	22	4	960 x 2260 x 950	305	975	200	3 - 8	SAE #1	Any Soil	35 - 39
Y2430DPL	24	3	850 x 2200 x 1100	380	870	200 - 250				45 - 51
Y2630DPL	26		1070 x 2310 x 1300	491	1390	250 - 300				70 - 90

POLY PLOW

Model Name	Disc size (inch)	Quantity of disc (pieces)	Width x Length x Height (mm x mm x mm)	Weight (kg)	Working Width (mm)	Working Depth (mm)	Working Speed (km/hr)	Category	For soil	Horse Power (PS)
Y2260PDL	22	6	1340 x 2220 x 955	350	1260	100	3 - 8	SAE #1	Any Soil	35 - 39
Y2460PDL	24		1450 x 2200 x 980	416	1385	100 - 150				45 - 51



Plowing + Seeding



Fertilizing



Soil Covering



**COMPATIBLE WITH
YANMAR EF TRACTORS
EF393T & EF514T
and
YM TRACTORS
YM351A & YM357A**



SPECIFICATIONS											
Model Name	Size	Working Depth (mm)	Work Speed (km/h)	Capacity of Seed Tank (kg)	Capacity of Fertilizer Tank (kg)	Fertilizer Consumption (kg/ha)	Planting Pitch (mm)	Interrow Space (mm)	Weight (kg)	Category	Horse Power (HP)
PCS-3	3 Row	100 - 150	4	7 kg x 3	20 kg x 2	125	200 - 250	600 - 700	212	SAE #1	35 - 60
PCS-4	4 Row	100 - 150	4	7 kg x 4	20 kg x 2	125	200 - 250	600 - 700	250	SAE #1	55 - 75