



YANMAR

Vi010-2A

MINI-EXCAVATOR



Operating weight

1 225 kg

Engine

3TNV70-WBVB

Digging force (arm/bucket)

570/1 400 kgf

COMPACTNESS

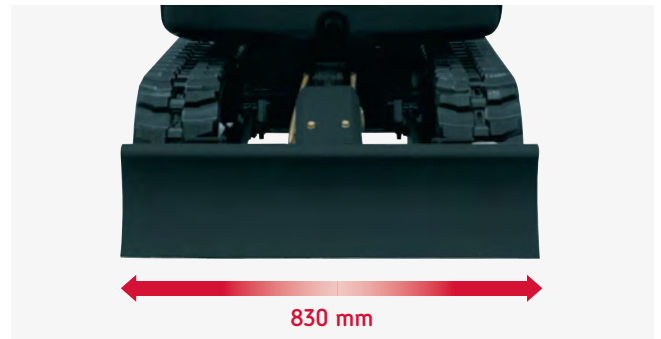
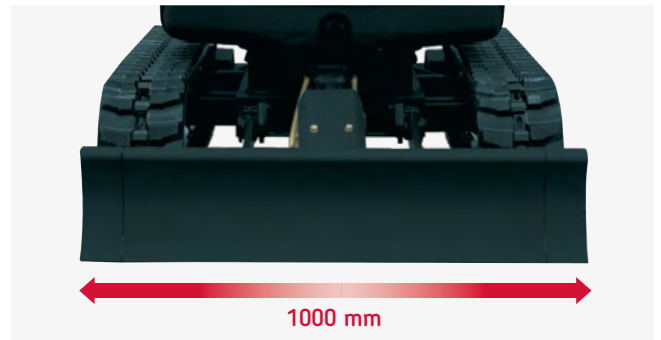
Here's the shape for simple and efficient work in confined spaces. The ViO10-2A is a tenacious worker for narrow spots such as housing foundations, indoor renovation, pipe laying and landscaping.



DESIGN PRINCIPLES

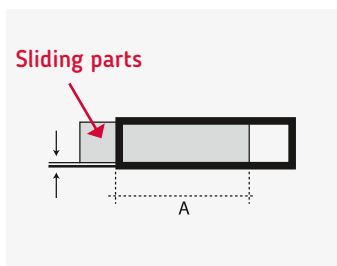
The ViO10-2A is a real Zero Tail Swing machine:

- + Extended undercarriage, neither the counterweight nor the front part of the upper frame exceed the width of the crawlers.
- + Retracted undercarriage, the rear of the machine only exceeds 85 mm.
- + Front swing radius with boom swing: 1 080 mm.
- + Rear swing radius: only 650 mm.
- + Width of the machine reduced to 830 mm when the undercarriage is retracted.

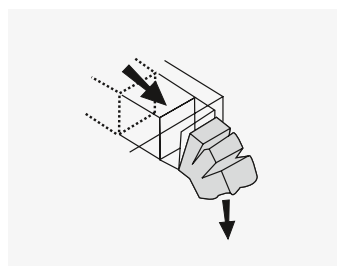


EXTENDABLE UNDERCARRIAGE OF UNIQUE CONCEPTION

- + Reduced clearance between the sliding parts: no soil build-up during the extension of undercarriage.
- + High reliability over a long-term period.
- + The ViO10-2A is extremely stable due to the use of an extended undercarriage and good weight distribution.



Small play due to long overlap (A)



Clogged mud is easily pushed out

SIMPLE FOLDING EXTENDABLE BLADE

- + The hinged blade extensions are permanently fixed on the blade.
- + No tools are necessary to change quickly the position.
- + No risk to lose the blade extensions.

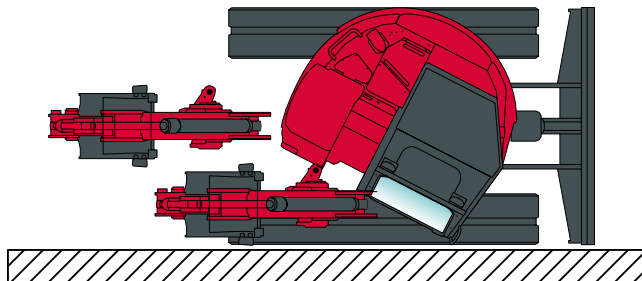


HIGH PERFORMANCE

Combining long experience and unrivalled expertise, YANMAR's technology ensures environmental performance and high efficiency.

A NEW-GENERATION YANMAR "TNV" (TOTALLY NEW VALUE) ENGINE

- + Fully compliant with European norm Stage V.
- + Low speed - increased life.
- + Less vibration.
- + Use of a Yanmar engine 3 cylinders and an hydraulic system using a variable flow double piston pump: high productivity.
- + High digging forces for such a machine.



WORKING EQUIPMENT

- + Dual or single-action auxiliary circuit to add various accessories (swivelling ditch cleaning buckets).
- + Lifting of the machine on one point thanks to a hook on the top of the boom.

ADVANTAGES FOR THE USER

- + Easy access in narrow areas.
- + Possibility to work along a wall.
- + The ViO concept allows the operator to work without paying attention to the rear of the machine: safety and productivity.
- + Machine perfectly adapted for restoration of houses.
- + Easy use, even for unexperimented users.



COMFORT & SAFETY

The many easy to use features include the comfortable seat with retractable seatbelt, sensitive lever controls, a footrest, and uncomplicated lever arrangement.



ERGONOMIC PILOT SYSTEM

- + Progressive hydraulic pilot system for more precision.
- + Separate pedals for the 3rd circuit (PTO) and boom swing: possibility of combined movements.
- + Both pedals are fitted with solid protections made from steel that can be folded sideways.
- + Access to operating position on both sides.

PTO PEDAL AND BOOM PEDAL FITTED WITH FOLDABLE PROTECTIONS IN ORDER TO AVOID UNWANTED MOVEMENTS.

ROPS PROTECTIVE FRAME

- + Roll Over Protective Structure.
- + Can be folded rearwards, allowing the machine to travel under low overhead heights.

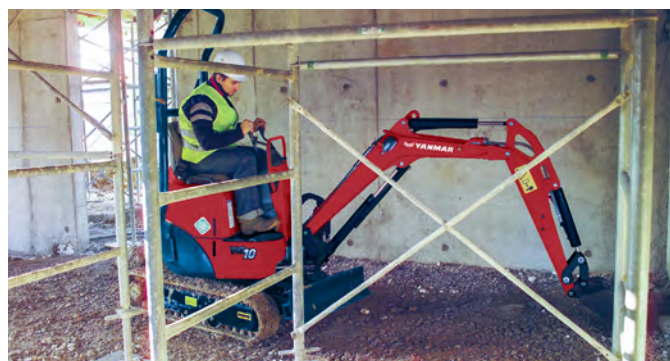
SAFETY FOR THE OPERATOR

- + Retractable seat belt.
- + Safety lever to lock the main functions of the machine.
- + Safety bar on the front part of the machine.
- + Large cast iron counterweight to protect the rear of the machine.
- + Working lamp on the boom.

ACCESS TO OPERATING POSITION ON BOTH SIDES



RELIABILITY & ACCESSIBILITY



Simple maintenance structure for fast and easy access wherever it's needed.

EASY ACCESS TO MAINTENANCE POINTS

+ A large engine bonnet allows quick access for main components.

+ Left side protection in steel easily removable (access to filter).



1 Perfect protection on blade cylinder.



2 Careful routing of hydraulic pipes and hoses.



3 Perfect protection on boom cylinder.

TECHNICAL SPECIFICATIONS

[ENGINE]

| | |
|---------------------------|--------------------------|
| Yanmar diesel 3 cylinders | 3TNV70-WBVB |
| Rated output (DIN 6270B) | 9.2 kw/12.5 HP/2 000 rpm |
| Displacement | 854 cm ³ |
| Max. torque | 52 N.m./1 600 rpm |

[HYDRAULIC CIRCUIT]

| | |
|--------------------------------|-------------|
| System capacity | 14.3 l |
| Max. pressure | 210 bar |
| Variable flow dual piston pump | 2 x 11 l/mn |

[PERFORMANCES]

| | |
|----------------------------|--------------------------|
| Yanmar diesel 3 cylinders | 3TNV70-WBVB |
| Rated output (DIN 6270B) | 9.2 kw/12.5 HP/2 000 rpm |
| Displacement | 854 cm ³ |
| Max. torque | 52 N.m./1 600 rpm |
| Travelling speed | 2.1 km/h |
| Swing speed | 10 rpm |
| Digging force (arm/bucket) | 570/1 400 kgf |
| Boom swing (L/R) | 50°/90° |
| Ground pressure | 0.26 kg/cm ² |
| Grade ability | 25° |
| Shoe width | 180 mm |
| Ground clearance | 140 mm |
| Blade (width x height) | 830/1 000 x 210 mm |

[MISCELLANEOUS]


| | |
|---|--------------------------|
| Fuel tank | 12 l |
| Cooling system | 2.5 l |
| Transport dimensions (L x w x h) | 3 040 x 1 000 x 1 580 mm |
| Noise level LwA (2000/14/EC & 2005/88/EC) | 89 dBA |

[OPTIONAL EQUIPMENT]

Special paint | Standard buckets | Ditch cleaning buckets |
Swivelling buckets | Hydraulic breaker.

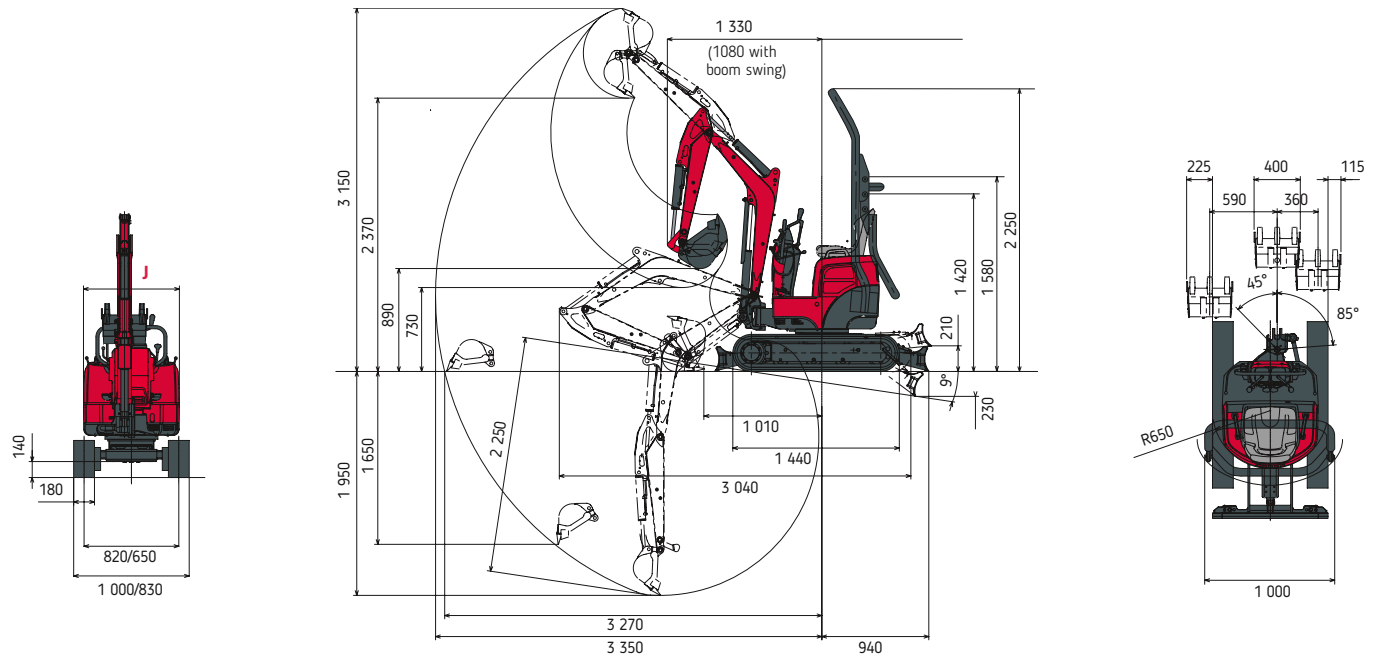
[HYDRAULIC SYSTEM]

| | | |
|-------|------------------------------------|-----------------|
| PTO | Measured data at max. engine speed | |
| | Pressure | Oil flow |
| 1 way | 0 - 190 bar | 24.5 - 9.3 l/mn |

 Oil flow decreases as the pressure increases

TECHNICAL SPECIFICATIONS

Operating weight +-2% (EC Norms): 1 225 kg
 Transport weight +-2% (EC Norms): 1 150 kg



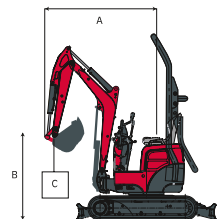
Subject to any technical modifications.
 Dimensions given in mm with standard Yanmar bucket.

MACHINE WITH RUBBER CRAWLERS, BUCKET OF 20 KG (400 MM)

Tipping load, rating over front

Tipping load, rating over side 90°

A: Overhang from rotational axis (m).
B: Height of hooking point (m).
C: Safe working load (kg).
N: Retracted undercarriage.
W: Extended undercarriage.



| A | Blade above ground | | | | | | | | | | | | Blade above ground | | | | | | | | | | | | |
|--------|--------------------|-----|-----|-------|------|------|-------|------|------|-------|-----|------|--------------------|------|------|-------|------|------|-------|------|------|-------|-----|------|---|
| | Maxi | | | 2,5 m | | | 2,0 m | | | 1,5 m | | | Maxi | | | 2,5 m | | | 2,0 m | | | 1,5 m | | | |
| | N | W | | N | W | | N | W | | N | W | | N | W | | N | W | | N | W | | N | W | | |
| 2,0 m | *185 | 110 | | *185 | *185 | 120 | *190 | *185 | 145 | *185 | - | - | - | *185 | 115 | *185 | *185 | 120 | *190 | *185 | 145 | *185 | - | - | - |
| 1,5 m | 125 | 90 | 160 | 155 | 115 | *205 | 205 | 160 | *205 | - | - | - | 125 | 95 | 230 | 155 | 120 | *205 | *205 | 165 | *205 | - | - | - | |
| 1,0 m | 115 | 85 | 145 | 145 | 110 | 180 | 200 | 155 | *265 | 380 | 245 | *365 | 115 | 90 | *230 | 145 | 115 | *240 | 200 | 160 | *270 | *380 | 255 | *370 | |
| 0,5 m | 110 | 80 | 130 | 145 | 100 | 170 | 195 | 145 | 230 | 305 | 200 | 355 | 110 | 85 | *245 | 145 | 100 | *270 | 195 | 150 | *345 | 305 | 210 | *550 | |
| 0 m | 115 | 80 | 140 | 135 | 100 | 175 | 185 | 140 | 230 | 270 | 200 | 335 | 115 | 85 | *260 | 140 | 100 | *305 | 185 | 140 | *385 | 275 | 205 | *600 | |
| -0,5 m | 125 | 90 | 155 | 140 | 100 | 165 | 175 | 130 | 215 | 260 | 200 | 330 | 125 | 90 | *280 | 145 | 105 | *305 | 180 | 135 | 395 | 260 | 210 | 615 | |

[The data contained in these tables represent the lifting capacity in accordance with ISO standard 10567. They correspond to 75% of the maximum static tipping load or 87% of the hydraulic lifting power. Datas marked * are the hydraulic limits of the lifting power.]



YANMAR



Yanmar Compact Equipment EMEA

GB_Vi010-2A_0922



www.yanmar.com

***BUILDING
WITH YOU***

Printed in France – Materials and specifications are subject to change from the manufacturer without notice – Please contact your local Yanmar Compact Equipment EMEA dealer for further information.