



**YANMAR**

# SV26

MINI EXCAVATOR



**Operating weight**

2 680 kg (Canopy) / 2 775 kg (Cabin)

**Engine**

3TNV80F

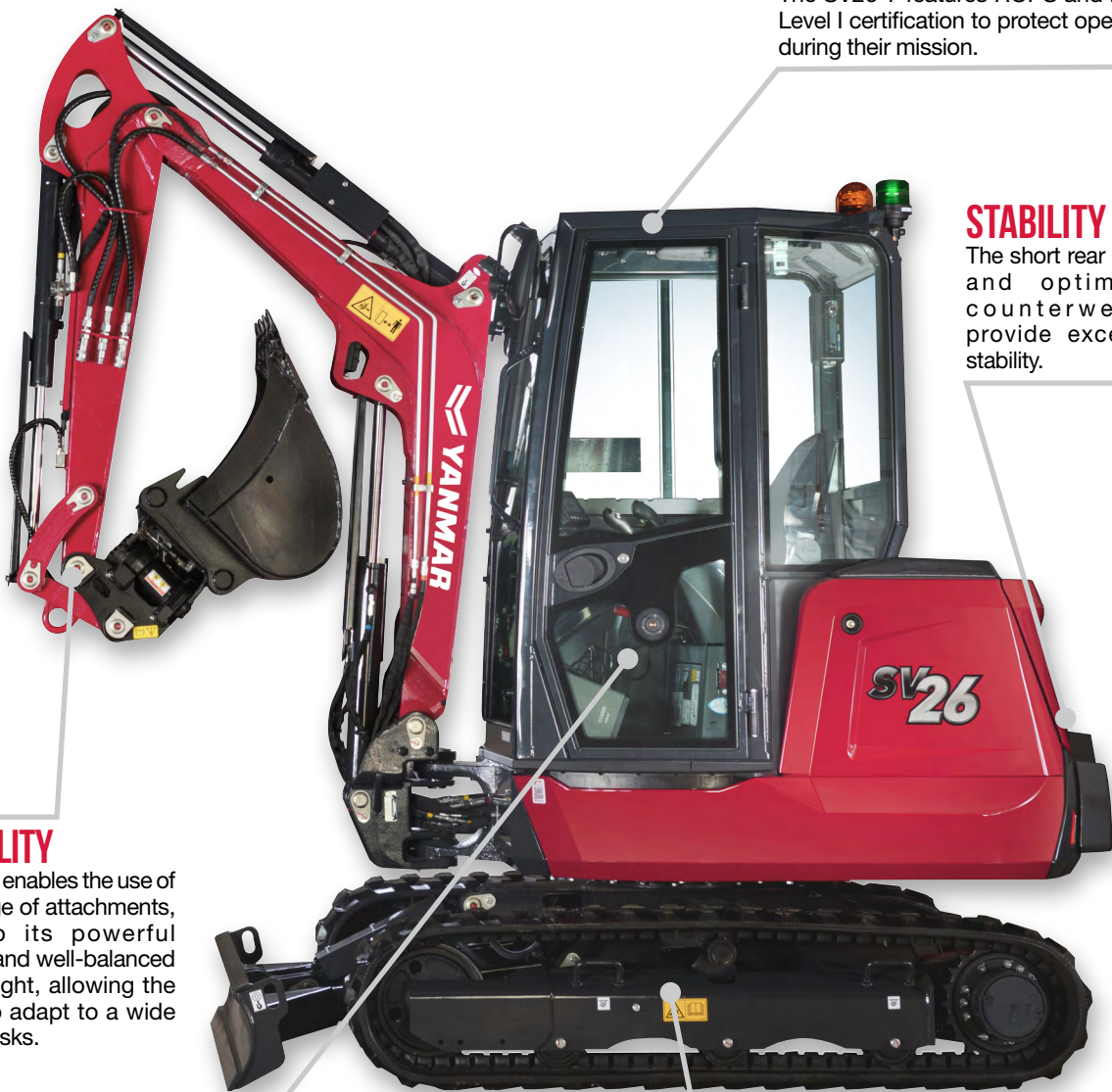
**Digging force (arm)**

16.5 / 13.6 kN (long arm)

**Digging force (bucket)**

21.4 kN

# COMPACT. POWERFUL. UNSTOPPABLE.



## SAFETY

The SV26-7 features ROPS and FOPS Level I certification to protect operators during their mission.

## STABILITY

The short rear swing and optimized counterweight provide excellent stability.

## VERSATILITY

The SV26-7 enables the use of a wide range of attachments, thanks to its powerful hydraulics and well-balanced counterweight, allowing the machine to adapt to a wide variety of tasks.

## COMFORT

The spacious cabin features a large door, broad windows, and a wide display for optimal comfort.

## COMPACTNESS

With a compact track length of only 1 570 mm, the SV26-7 excels at operating in confined spaces and challenging urban jobsites.

# DRIVE IT. LOVE IT. MAKE IT YOURS.



Power to spare packed into a compact performer.



The SV26-7 tackles confined jobsites with confidence—from urban foundations to landscaping projects.



Combining intuitive controls, great stability, and impressive digging, this lightweight powerhouse adapts to any terrain while fitting through the tightest spaces.



# COMPACT FOOTPRINT, SERIOUS CAPABILITY



## COMPACT BY DESIGN

The SV26-7 is engineered for true urban versatility. Its short-tail swing, narrow undercarriage, and wide boom swinging base—75° to the left, 60° to the right—allow confident operation in confined areas without compromising reach or control. With a transport weight of 2 595 kg and an overall width of 1 550 mm including the cabin and rubber tracks, it easily navigates sites where space is limited but stability and efficiency remain essential. Urban construction, landscaping, and small building or renovation projects are all within reach, with enough swing radius for practical manoeuvring while keeping a strong focus on safety and accessibility.

## LIGHTWEIGHT AND GROUND-FRIENDLY

The SV26-7 combines a light, compact frame with robust stability, allowing it to operate confidently on sensitive or soft terrain. Its optimised weight distribution and low ground pressure make it ideal for landscaping slopes, utility trenches, and renovation sites where careful handling of the ground is essential. Compact yet capable, it delivers efficient performance without compromising safety or control.

## POWERFUL PERFORMANCE

The SV26-7's compact design goes hand in hand with exceptional digging and hydraulic performance. Key figures include:

- + Digging force (short / long arm): 16,5 kN/13,6 kN
- + European bucket digging force: 21,4 kN
- + Max digging depth (blade lifted): 2 590 (short arm) / 2 835 mm (long arm)
- + Max digging depth (blade lowered): 2 775 mm (short arm) / 3 025 mm (long arm)
- + Motor gross power: 18,4 kW (at 2400 rpm)

Combined with the ViPPS hydraulic system, these capabilities ensure precise, smooth, and highly efficient operation.



# DESIGNED AROUND THE OPERATOR



## CONTROL AND PRODUCTIVITY

The SV26-7 is a **highly versatile machine**, enabling operators to handle most small excavation, loading, and grading tasks with confidence. Its mechanical and hydraulic quick hitch systems allow **fast attachment changes** and support multiple connection options, making tool switching **smooth and efficient** while maintaining focus on the task. To speed up daily operations, the operator can **pre-set and save** the hydraulic flow for up to 5 attachments in a dedicated display menu.

## CONFIDENCE AND STABILITY

The SV26-7 gives operators **reliable control** thanks to its **short rear swing and optimized counterweight**, which deliver **excellent stability**, even when handling heavy buckets or attachments. Enhanced front stability ensure precise, responsive operation, allowing the operator to work efficiently and safely across all terrains.



## COMFORT AND SAFETY

The SV26-7 puts operator comfort, control, and safety at the forefront. Its spacious cab features a **large door** for easy entry, **generous windows**, **rear-view camera** for excellent all-round visibility, and a **4.3" display**, all ensuring a comfortable working environment throughout the day. Thoughtful design ensures that every control is within easy reach, making the operator space intuitive, safe, and highly ergonomic for long hours on site.



# EASY TO TRANSPORT

## READY TO MOVE

The SV26-7 is designed for **efficient and safe transport**. With a **machine weight of 2,595 kg** (cabin version) and four tie-down points on the lower frame, it can be easily **loaded onto a semi-trailer** along with a 2-bucket kit and a quick hitch. This streamlined setup reduces handling time, simplifies logistics between sites, and ensures the machine arrives ready to work, making it an ideal solution for operators who frequently move between jobsites.

# MAINTENANCE AND RELIABILITY

## DURABLE BY DESIGN

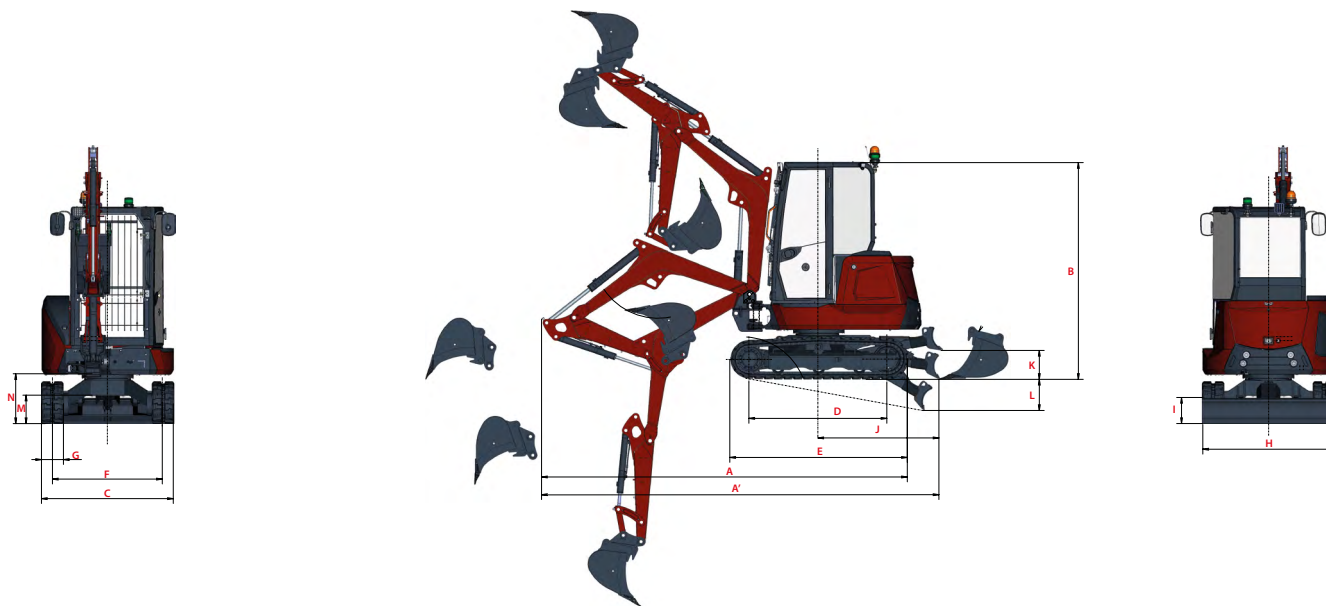
The SV26 embodies Yanmar's reputation for **strength and longevity**. Its **robust chassis, durable steel covers, and large counterweight** protect against shocks, friction, and everyday wear. **Hoses are shielded with abrasion-resistant sleeves** and routed inside the boom to avoid damages.

## EASY AND EFFICIENT MAINTENANCE

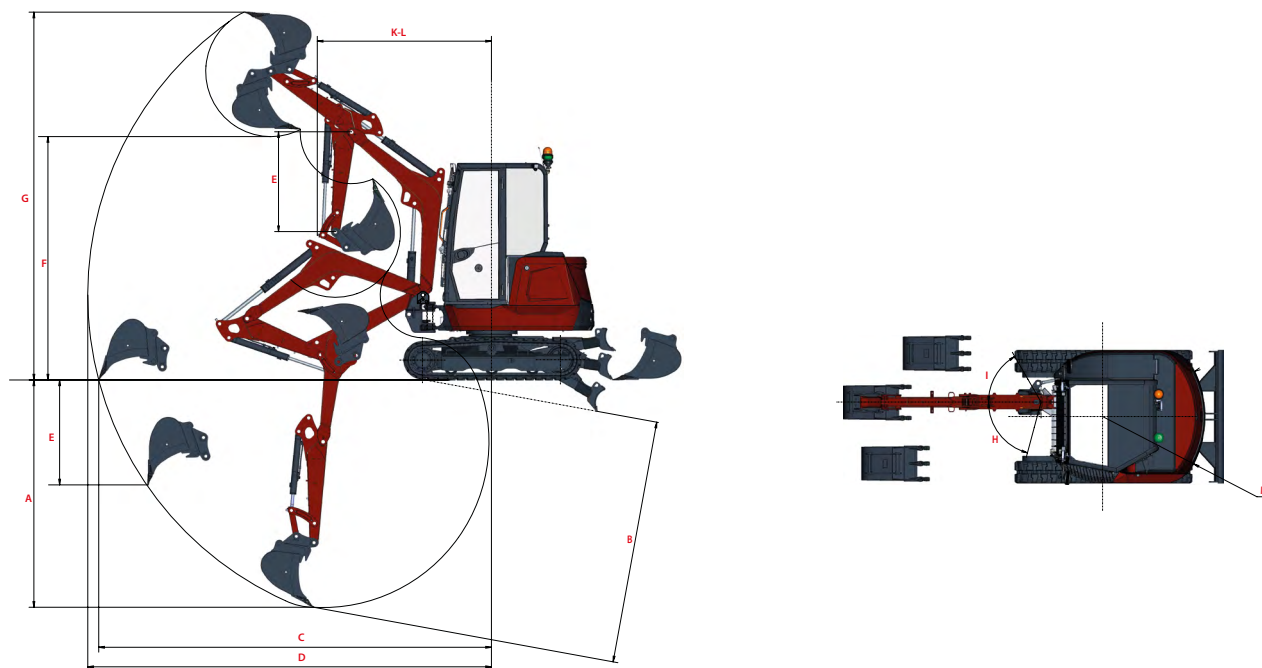
Service points are easily accessible through **rear and side covers, a panel under the seat, and a removable floor**, reducing both downtime and maintenance costs. The **blade cylinder features a two-part flexible design** for rapid replacement if needed. These thoughtful design choices make the SV26 **quick to service, easy to maintain, and consistently dependable** on every jobsite.



# DIMENSIONS



<b>A</b> Overall length	4310 / 4325* mm	<b>G</b> Track width	300** mm
<b>A'</b> Overall length with blade at the back	4525 / 4540* mm	<b>H</b> Overall blade width	1500 mm
<b>B</b> Overall height	2470 / 2465** mm	<b>I</b> Overall blade height	300 mm
<b>C</b> Overall width	1550 mm	<b>J</b> Blade distance	1380 mm
<b>D</b> Length of track on ground	1570 mm	<b>K</b> Max. lifting height above the ground	330 mm
<b>E</b> Undercarriage length	2020 mm	<b>L</b> Max. lowering depth from the ground	355 mm
<b>F</b> Lane	1250 mm	<b>M</b> Minimum ground clearance	325 mm
		<b>N</b> Minimum ground clearance under upper frame	555 mm



<b>A</b> Max. digging depth - Blade lifted	2590 / 2835* mm	<b>H</b> Boom swinging base to left	75°
<b>B</b> Max. digging depth - Blade lowered	2775 / 3025* mm	<b>I</b> Boom swinging base to right	60°
<b>C</b> Max. digging reach on ground	4470 / 4720* mm	<b>J</b> Arm length	1150 / 1400* mm
<b>D</b> Max. digging reach	4595 / 4835* mm	<b>K</b> Front turning radius	1985 / 2025* mm
<b>E</b> Max. vertical wall	1195 / 1400* mm	<b>L</b> Front turning radius with boom swing	1105 / 1115* mm
<b>F</b> Max. unloading height	2770 / 2930* mm	<b>M</b> Rear turning radius	1165 mm
<b>G</b> Max. cutting height	4190 / 4345* mm	<b>M'</b> Rear turning radius with additional counterweight	1240 mm

Short arm/ long arm\*    \*\* Extended tracks    \*\*\* Canopy / Cabin

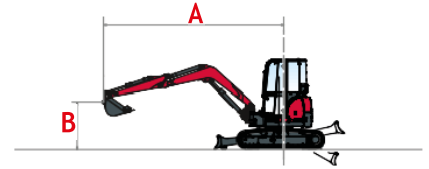
# LIFTING CAPACITY



Tipping load, rating over front



Tipping load, rating over side 90°



## Standard arm

### Canopy

#### Blade on ground/Blade above ground

A	Max		3,5 m		3 m		2,5 m		2 m		1,5 m	
	≡H	👤	≡H	👤	≡H	👤	≡H	👤	≡H	👤	≡H	👤
3 m	*550/*550	*550/*550	/	/	*550/*550	*550/*550	/	/	/	/	/	/
2,5 m	390/390	550/*550	/	/	*535/*535	*535/*535	/	/	/	/	/	/
2 m	355/355	*550/435	370/370	*550/455	475/475	*575/*575	*625/*625	*625/*625	/	/	*625/*625	*625/*625
1,5 m	320/320	*555/395	365/365	*580/450	465/465	*645/*645	610/610	*765/*765	860/860	*1025/*1025	/	/
1 m	315/315	*570/390	360/360	*615/440	450/450	560/560	585/585	735/735	/	/	/	/
0 m	320/320	*585/400	345/345	*645/430	430/430	*805/535	555/555	*1050/705	770/770	*1480/1005	/	/
-1 m	415/415	*620/515	/	/	430/430	*665/540	555/555	*900/705	775/775	*1210/1015	1270/1270	*1745/*1745
-1,5 m	*575/*575	*575/*575	/	/	/	/	*635/*635	*635/*635	*895/*895	*895/*895	*1240/*1240	*1240/*1240

### Cabin

#### Blade on ground/Blade above ground

A	Max		3,5 m		3 m		2,5 m		2 m		1,5 m	
	≡H	👤	≡H	👤	≡H	👤	≡H	👤	≡H	👤	≡H	👤
3 m	*550/*550	*550/*550	/	/	*550/*550	*550/*550	/	/	/	/	/	/
2,5 m	405/405	*550/*550	/	/	*535/*535	*535/*535	/	/	/	/	/	/
2 m	370/370	*550/450	385/385	*550/475	495/495	*575/*575	*625/*625	*625/*625	/	/	/	/
1,5 m	330/330	*555/410	380/380	*580/470	480/480	*645/*645	630/630	*765/*765	/	/	*1025/*1025	*1025/*1025
1 m	330/330	*570/405	370/370	*615/460	465/465	*720/580	605/605	*915/*765	/	/	/	/
0 m	335/335	585/415	360/360	*645/450	445/445	*805/560	575/575	*1050/735	800/800	*1480/1045	/	/
-1 m	430/430	*620/*620	/	/	445/445	*665/560	575/575	*900/735	805/805	*1210/*1210	1315/1315	*1745/*1745
-1,5 m	*575/*575	*575/*575	/	/	/	/	*635/*635	*635/*635	*895/*895	*895/*895	*1240/*1240	*1240/*1240

## Standard arm, additional counterweight

### Canopy

#### Blade on ground/Blade above ground

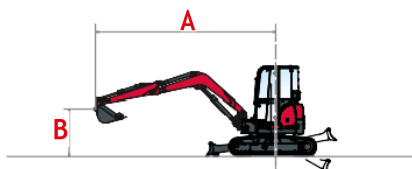
A	Max		3,5 m		3 m		2,5 m		2 m		1,5 m	
	≡H	👤	≡H	👤	≡H	👤	≡H	👤	≡H	👤	≡H	👤
3 m	*550/*550	*550/*550	/	/	*550/*550	*550/*550	/	/	/	/	/	/
2,5 m	440/440	*550/*550	/	/	*535/*535	*535/*535	/	/	/	/	/	/
2 m	400/400	*550/*550	420/420	*550/*550	*575/*575	*575/*575	*625/*625	*625/*625	/	/	/	/
1,5 m	365/365	*555/445	415/415	*580/*580	525/525	*645/*645	*765/*765	*765/*765	*1025/*1025	*1025/*1025	/	/
1 m	360/360	*570/440	405/405	*615/495	510/510	*720/*720	660/660	*915/*915	/	/	/	/
0 m	365/365	*585/450	395/395	*645/485	490/490	*805/605	630/630	*1050/790	870/870	*1480/1130	/	/
-1 m	470/470	*620/*620	/	/	490/490	*665/*665	630/630	*900/*900	880/880	*1210/*1210	1430/1430	*1745/*1745
-1,5 m	*575/*575	*575/*575	/	/	/	/	*635/*635	*635/*635	*895/*895	*895/*895	*1240/*1240	*1240/*1240

### Cabin

#### Blade on ground/Blade above ground

A	Max		3,5 m		3 m		2,5 m		2 m		1,5 m	
	≡H	👤	≡H	👤	≡H	👤	≡H	👤	≡H	👤	≡H	👤
3 m	*550/*550	*550/*550	/	/	*550/*550	*550/*550	/	/	/	/	/	/
2,5 m	455/455	*550/*550	/	/	*535/*535	*535/*535	/	/	/	/	/	/
2 m	415/415	*550/*550	435/435	*550/*550	*575/*575	*575/*575	*625/*625	*625/*625	/	/	/	/
1,5 m	375/375	*555/460	430/430	*580/*580	540/540	*645/*645	*765/*765	*765/*765	*1025/*1025	*1025/*1025	/	/
1 m	370/370	*570/455	420/420	*615/515	525/525	*720/*720	680/680	*915/*915	/	/	/	/
0 m	380/380	*585/465	410/410	*645/505	505/505	*805/625	650/650	*1050/820	900/900	*1480/1170	/	/
-1 m	485/485	*620/*620	/	/	505/505	*665/*665	650/650	*900/*900	910/910	*1210/*1210	1480/1480	*1745/*1745
-1,5 m	*575/*575	*575/*575	/	/	/	/	*635/*635	*635/*635	*895/*895	*895/*895	*1240/*1240	*1240/*1240

# LIFTING CAPACITY



Tipping load, rating over front



Tipping load, rating over side 90°

## Long arm

### Canopy

#### Blade on ground/Blade above ground

A	Max		3,5 m		3 m		2,5 m		2 m		1,5 m	
3 m	415/415	*485/*485	/	/	*455/*455	*455/*455	/	/	/	/	/	/
2,5 m	340/340	*490/*490	375/375	*475/*475	*460/*460	*460/*460	/	/	/	/	/	/
2 m	310/310	*495/380	370/370	*490/*490	*505/*505	*505/*505	/	/	/	/	/	/
1,5 m	290/290	*500/360	365/365	*530/450	465/465	*580/*580	*665/*665	*665/*665	/	/	/	/
1 m	285/285	*520/355	355/355	*575/440	445/445	*665/555	585/585	*825/*825	820/820	*1180/*1180	/	/
0 m	290/290	*545/360	340/340	*635/420	420/420	*785/530	545/545	*1025/695	760/760	*1480/995	1220/1220	*2455/1720
-1 m	350/350	*570/440	/	/	415/415	*725/525	540/540	*955/690	760/760	*1310/995	1240/1240	*2000/*2000
-1,5 m	445/445	*595/*595	/	/	/	/	550/550	*780/*780	770/770	*1070/*1070	1260/1260	*1575/*1575

### Cabin

#### Blade on ground/Blade above ground

A	Max		3,5 m		3 m		2,5 m		2 m		1,5 m	
3 m	*485/*485	*485/*485	/	/	*455/*455	*455/*455	/	/	/	/	/	/
2,5 m	350/350	*490/*490	390/390	*475/*475	*460/*460	*460/*460	/	/	/	/	/	/
2 m	320/320	*495/395	385/385	*490/*490	*505/*505	*505/*505	/	/	/	/	/	/
1,5 m	305/305	*500/375	375/375	*530/*530	480/480	*580/*580	*665/*665	*665/*665	/	/	/	/
1 m	300/300	*520/370	370/370	*575/455	465/465	*665/*665	610/610	*825/*825	850/850	*1180/*1180	/	/
0 m	300/300	*545/375	355/355	*635/440	440/440	*785/550	570/570	*1025/725	790/790	*1480/1035	1270/1270	*2455/1785
-1 m	365/365	*570/460	/	/	445/445	*725/545	560/560	*955/720	785/785	*1310/1035	1285/1285	*2000/*2000
-1,5 m	465/465	*595/*595	/	/	/	/	570/570	*780/*780	800/800	*1070/*1070	1305/1305	*1575/*1575

## Long arm, additional counterweight

### Canopy

#### Blade on ground/Blade above ground

A	Max		3,5 m		3 m		2,5 m		2 m		1,5 m	
3 m	*485/*485	*485/*485	/	/	*455/*455	*455/*455	/	/	/	/	/	/
2,5 m	385/385	*490/*490	*475/*475	*475/*475	*460/*460	*460/*460	/	/	/	/	/	/
2 m	350/350	*495/*495	420/420	*490/*490	*505/*505	*505/*505	/	/	/	/	/	/
1,5 m	335/335	*500/405	415/415	*530/*530	*580/*580	*580/*580	*665/*665	*665/*665	/	/	/	/
1 m	330/330	*520/400	405/405	*575/*575	505/505	*665/*665	660/660	*825/*825	925/925	*1180/*1180	/	/
0 m	335/335	*545/410	390/390	*635/480	480/480	*785/600	620/620	*1025/785	860/860	*1480/1120	1385/1385	*2455/1930
-1 m	405/405	*570/*570	/	/	475/475	*725/595	615/615	*955/780	860/860	*1310/1120	1400/1400	*2000/*2000
-1,5 m	510/510	*595/*595	/	/	/	/	625/625	*780/*780	875/875	*1070/*1070	*1575/*1575	*1575/*1575

### Cabin

#### Blade on ground/Blade above ground

A	Max		3,5 m		3 m		2,5 m		2 m		1,5 m	
3 m	*485/*485	*485/*485	/	/	*455/*455	*455/*455	/	/	/	/	/	/
2,5 m	400/400	*490/*490	*475/*475	*475/*475	*460/*460	*460/*460	/	/	/	/	/	/
2 m	360/360	*495/*495	*490/*490	*490/*490	*505/*505	*505/*505	/	/	/	/	/	/
1,5 m	345/345	*500/420	425/425	*530/*530	*580/*580	*580/*580	*665/*665	*665/*665	/	/	/	/
1 m	340/340	*520/420	415/415	*575/*575	525/525	*665/*665	685/685	*825/*825	950/950	*1180/*1180	/	/
0 m	345/345	*545/425	400/400	*635/495	495/495	*785/620	645/645	*1025/815	890/890	*1480/1160	1430/1430	*2455/2000
-1 m	415/415	*570/*570	/	/	495/495	*725/615	635/635	*955/805	890/890	*1310/*1310	1445/1445	*2000/*2000
-1,5 m	*595/*595	*595/*595	/	/	/	/	645/645	*780/*780	900/900	*1070/*1070	*1575/*1575	*1575/*1575

[ The data in this table represents the lifting capacity in accordance with IOS 10567. They do not include the weight of the bucket and correspond to 75% of the maximum static tipping load of the 87% of the hydraulic lifting capacity. Data marked with \* are the hydraulic limits of the lifting force. ]

# SPECIFICATIONS

## [ WEIGHT +/- 2% (EN STANDARDS) ]

	Weight	Ground pressure	Weight	Ground pressure
Operating weight (rubber/steel tracks)	2 735/2 835 kg	0.32/0.33 kgf/cm <sup>2</sup>	2 640/2 740 kg	0.31/0.32 kgf/cm <sup>2</sup>
Transport weight (rubber/steel tracks)	2 555/ 2 655 kg	0.30/0.31 kgf/cm <sup>2</sup>	2 450 / 2 565 kg	0.29/0.30 kgf/cm <sup>2</sup>
With additional counterweight	+ 100 kg	-	+ 100 kg	-


## [ MOTOR ]

Type	3TNV80F-ZXKBVA
Fuel	Diesel
Regulation	Stage V
Net power	17.7 kW at 2400 rpm
Gross power	18.4 kW at 2400 rpm
Displacement	1.267 liters
Maximum torque	74.5 Nm (1900 +/- 100 rpm)
Cooling	Water-cooling
Starter	12 V - 1.4 kW
Battery	12 V - 55 Ah
Alternator	12 V - 55 A

## [ HYDRAULIC SYSTEM ]

Maximum pressure	210 bar
One double variable displacement piston pump	2 X 32.4 l/min
1 gear pump	21.6 l/min
1 gear pump	10.8 l/min

PTO	Measured data at max. engine speed	
	Pressure	Oil flow
PTO1	0 – 170 bar	54.2 -26.1 l/min
PTO2	0 – 180 bar	33.6 – 21.1 l/min
Hammer	120	37.2

 Oil flow decreases as the pressure increases

## [ PERFORMANCE ]

Travel speed	2.5 / 4.4 km/h
Rotation speed	9.7 rpm
Digging force (arm)	16.5 kN / 13.6 kN with long arm
Digging force (bucket)	21.4 kN
Traction force	23.5 kN / 12.1 kN*
Gradeability	30°
Noise level (2000/14/CE & 2005/88/CE)	LwA: dBA/LpA: dBA

## [ UNDERCARRIAGE ]

Number of slide shoe plate	1
Number of bottom rollers	3
Track tensioning system	Grease adjuster

## [ CAPACITIES ]

Fuel tank	39 l
Coolant	4,1 l
Engine oil	3,4 l (max)
Hydraulic circuit (including hydraulic tank)	49 l
Hydraulic tank	32 l

## [ MAINTENANCE FREQUENCY ]

[ Change engine oil and filter: 50 hours (1st) / 500 hours (2nd) ] [ Change fuel filter: 50 h (1st) / 250 h (2nd) ]  
 [ Change hydraulic oil: 50 h (1st) / 500 h (2nd) ] [ Change hydraulic filter: 50 h (1st) / 500h (2nd) ]  
 [ Change hydraulic oil return filter: 50 h (1st) / 500 h (2nd) ] [ Change cooling fluid: 2000 hours ]

# EQUIPMENT

## [ STANDARD EQUIPMENT ]

### PERFORMANCE

3TNV80F Yanmar EU compliant stage V diesel engine | Direct injection | VIPPS Hydraulic system (VIPPS Progressive 3 Pump System) | AUX1 proportional hydraulic line with control on joystick | Automatic kick down (AKD) travel motors (std.) | ECO mode I Auto-idling system | Long arm (1400 mm).

### COMFORT & EASE OF USE

4.3" LCD Interface | Standard mechanical suspension seat, adjustable, vinyl coat (canopy) or textile coat (cabin) | Adjustable wrist support | Foot rests | Wide travel pedals | Windshield in 2 parts (retractable upper part) | Double sliding right side window | Transparent upper front part | Wipers | Windshield washer | Automatic ceiling lamp | 2xUSB charging ports | Storage boxes | Lockable document storage | Cup holder | heating (cabin) | Quick connectors on battery terminal.

### SAFETY AND DURABILITY

Rear view camera on main LCD display | Safety valves on blade, boom, and arm cylinder with integrated overload warning | Handrails | Safety lever | Safety belt | Hammer for evacuation | Travel beep | Anchor points | Blade cylinder supply hose into two parts | Hoses protected by abrasion resistant sleeves & internal routing | Locking covers.

### MISCELLANEOUS

Fuel gauge | Tool kit | Grease pump | Fuel filter with indication light water separator in display.

## [ OPTIONAL EQUIPMENT ]

### EQUIPMENT AND PERFORMANCE

Special paint | Additional counterweight | 2nd auxiliary circuit with proportional control | 1/2 circuit | Auto-idling system | ECO mode | Bio oil | 2 LED head lights on the front of the machine | Flat face hydraulic quick connector AUX1 and AUX2 | Independent Powertilt supply line | 1 LED light + beacon to the rear of the machine.

### COMFORT AND EASE OF USE

Premium mechanical suspension seat heated (opt.) | Radio FM/ DAB | Centralised greasing | Smart phone holder.

### SECURITY AND DURABILITY

GPS track unit (TU700) | Anti-theft device (Key/Keypad/ LCD pincode) | Travel alarm white noise | Smart Assist Remote (SAR) Telematics | FOPS | front operator protection for cabin .

## [ ATTACHMENTS ]

Yanmar gives you the attachment that fit your needs and match the safety standards in force in your country: mechanical quick coupler, hydraulic quick coupler, ditching bucket, swinging bucket, backhoe bucket, hydraulic breaker...



**YANMAR**



Yanmar Compact Equipment EMEA

GB\_SV26-7\_0426



[www.yanmar.com](http://www.yanmar.com)

***BUILDING***  
***WITH YOU***

Printed in France – Materials and specifications are subject to change from the manufacturer without notice – Please contact your local Yanmar Compact Equipment EMEA dealer for further information.