



YANMAR

PRODUCTS GUIDE

YANMAR

Yanmar has been a leader in the field of engine based technology since the company was founded in 1912, and over the years Yanmar has earned recognition as a world class innovator and global manufacturing company.

The company was founded on a vision of technological innovation to save energy and to help people live better lives, and with the world facing key issues such as energy supply, global warming and food supply, this vision has become more relevant than ever. This is reflected in the many fields such as agricultural machinery, marine engines and craft, construction machinery and energy systems where Yanmar system products contribute to human society around the globe.

These products are backed up by the global Yanmar sales and aftersales support network which is dedicated to ensuring that Yanmar users get the maximum benefit from their Yanmar system and that they are glad they chose Yanmar.

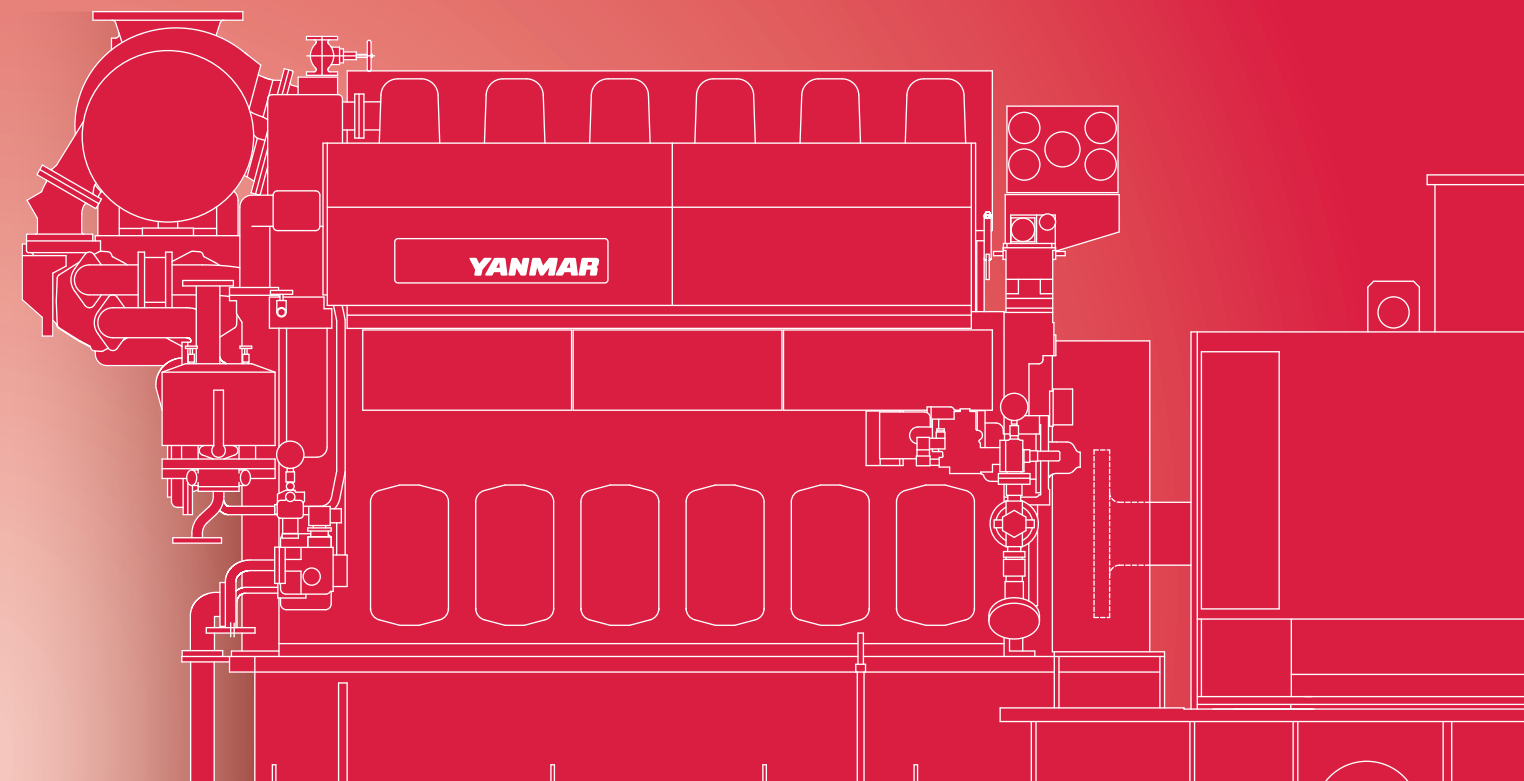
DIESEL ENGINE GENERATOR SET

Generator Capacity [~3400kWe]

YANMAR ENERGY SYSTEM CO., LTD.

AKIHABARA UDX 18F
14-1, 4-Choume, Sotokanda, Chiyoda-ku
Tokyo, 101-0021 JAPAN
TEL +81-3-6733-4250 FAX +81-3-6733-4251

yanmar.com/global/



YOUR LONG TERM PARTNER

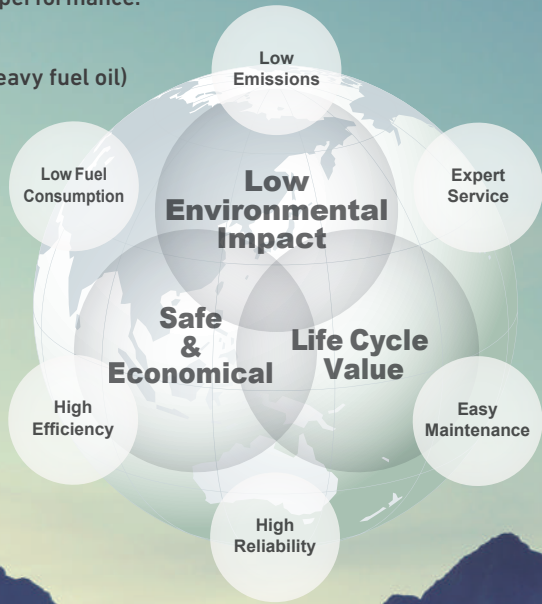
Whether it's for Standby, Prime or Continuous operation, Yanmar has engines you can trust.

Durable and Reliable

Developed from our powerful and reliable marine diesels, Yanmar's range of land engines are prized by industry for their durability, economy amd outstanding environmental performance.

Low Operating Cost

A variety of fuels including M.D.O. (marine diesel oil) and in some cases H.F.O. (heavy fuel oil) can be used with these engines. *Please consult YANMAR before using H.F.O. Range of medium-speed engines available offering lower fuel oil consumption.



Product Lineup

Engine rpm	Fre	Model	500	1000	1500	2000	2500	3000	3500	4000	[kWe]
750min ⁻¹	50	6EY33LW									~3400kWe
720min ⁻¹	60										~3400kWe
750min ⁻¹	50	8EY26LW									~2300kWe
720min ⁻¹	60										~2300kWe
750min ⁻¹	50	6EY26LW									~1720kWe
720min ⁻¹	60										~1720kWe
1000min ⁻¹	50	6EY22ALW									~1250kWe
900min ⁻¹	60										~1250kWe
1000min ⁻¹	50	6EY18ALW									~750kWe
900min ⁻¹	60										~750kWe
1500min ⁻¹	50	AY20L-ET									~500kWe
1800min ⁻¹	60										~520kWe

Note : Since output may differ depending on the usage environment Yanmar can propose the optimal model for the actual usage situation.

POWER SOLUTION BUSINESS

Amagasaki Factory

Development and Production of World-class Quality Large Diesel Engines

Amagasaki Factory began operation in 1936 as the world's first factory to produce small sized diesel engines.

Today, the factory mass produces large-sized diesel engines for marine and generator use,

and also produces diesel and gas engines for land use and general power sources.

From 1983 the factory also started the production of gas turbines and continues to manufacture high quality power products for the global market.



Amagasaki Factory



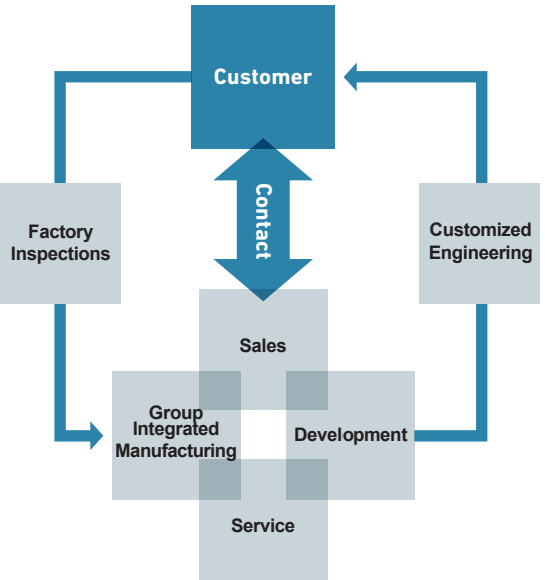
Research and Development



Assembly

Group Integrated Production System & Customized Engineering

Main parts such as cylinder block, cylinder head, pistons, gears and fuel injection equipment are supplied by Yanmar Group companies and customized in our own factory in Japan.



10 Major Ship Certifications



Certifications of 10 major shipping classification societies.

- NK [Nippon Kaiji Kyokai]
- ABS [American Bureau of Shipping]
- BV [Bureau Veritas]
- CCS [China Classification Society]
- DNVGL [Det Norske Veritas and Germanischer Lloyd]
- IRS [Indian Register of Shipping]
- KR [Korean Register of Shipping]
- LR [Lloyd's Register of Shipping]
- RINA [Registro Italiano Navale]
- RS [Russian Maritime Register of Shipping]

Internationally Certified Quality Control and Environmental Management Control Systems



*1) ISO 9001: International Quality Control System Standard of the International Standardization Organization, (Certification No. 912208)



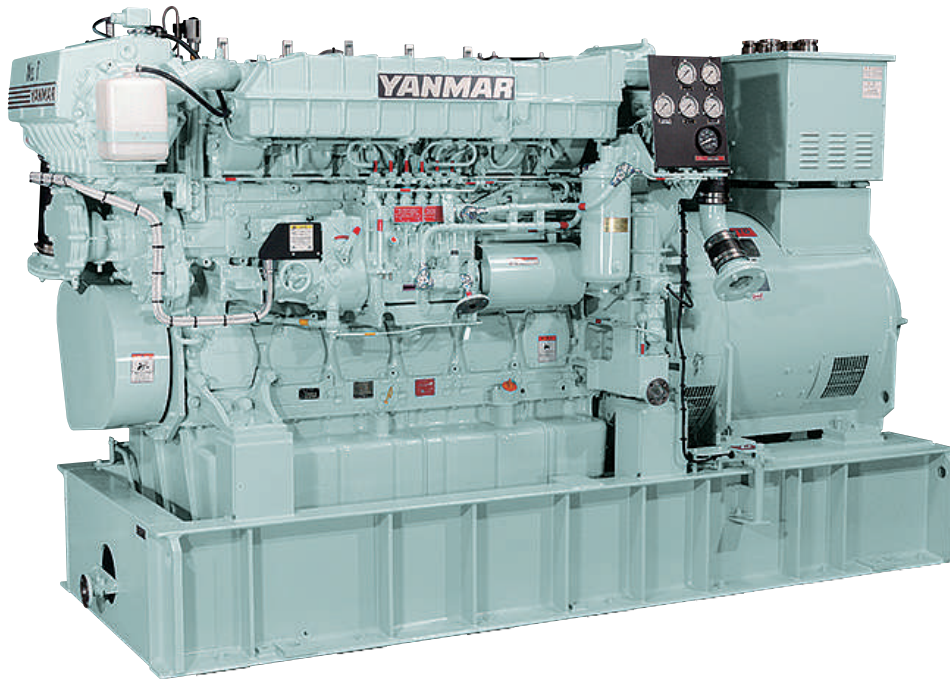
*2) ISO 14001: International Environmental Management System Standard of the International Standardization Organization, (Certification No. 770250)

**YANMAR**

High Speed Diesel Engine

AY20L-ET

500 / 520kWe



High efficiency & performance

- Designed for the best balance of combustion and low mechanical losses using YANMAR simulation analytical technology

Excellent load acceptance

- The turbocharger and electronic governor, both included as standard equipment, are highly responsive to load input and changes

Reduced environmental burden

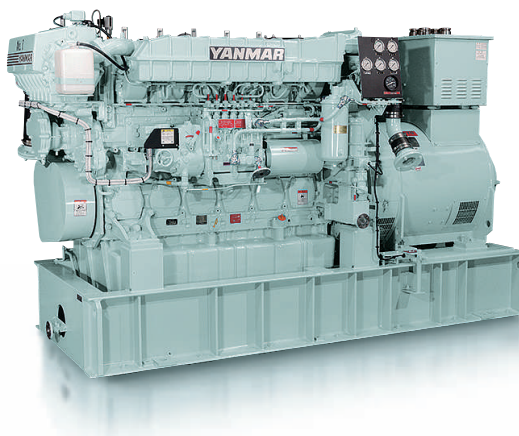
- YANMAR original combustion system

Easy maintenance & expert service

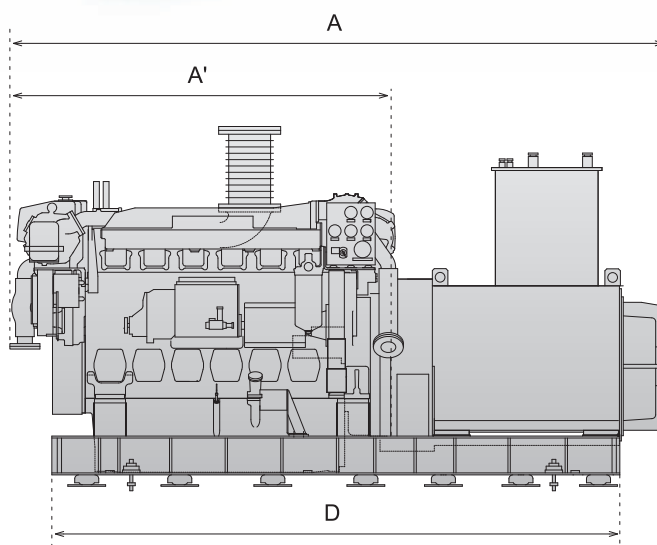
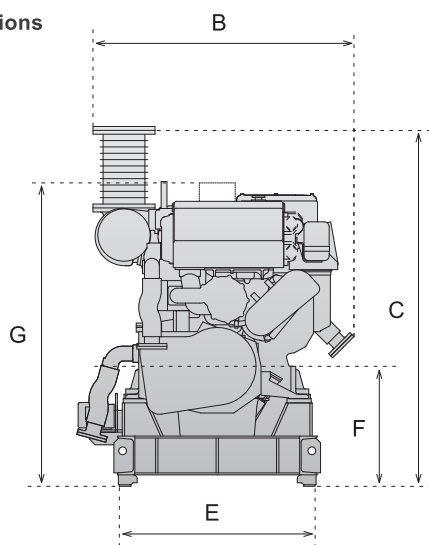
- The cylinder block can be accessed easily by opening the side cover, making crankcase bearing inspection simple
- The piston can be extracted without reversing the engine
- Outstanding mountability for packages thanks to the low profile design
- The bonnet of valve rocker arm case has a handle and requires no tool for removing. Valve adjustment and checks are easy.
- Expert and comprehensive support for long-term use by our worldwide service network



High Speed Diesel Engine
AY20L-ET



Dimensions



G : Minimum height for removing piston

Model	A	A'	B	C	D	E	F	G
AY20L-ET	3040	1860	1445	1836	2600	1030	619	1565

Models may vary from images shown depending on the specification or options chosen.

Specifications

Model			AY20L-ET	
Frequency			50Hz	60Hz
Generator	Rated Output	kWe	500	520
	Type		3-Phase Brushless	
	Voltage	V	~6600	
	No. of Poles	P	4	
	Power Factor	%	80(lagging)	
Diesel Engine	Rated Output	kW(HP)	544(730)	565(758)
	Type		Vertical water-cooled 4-stroke Diesel	
	No. of Cylinders		6	
	Bore × Stroke	mm	155 × 180	
	Rated Speed	min ⁻¹	1500	1800
Total Weight (Gen.Set)			4750	

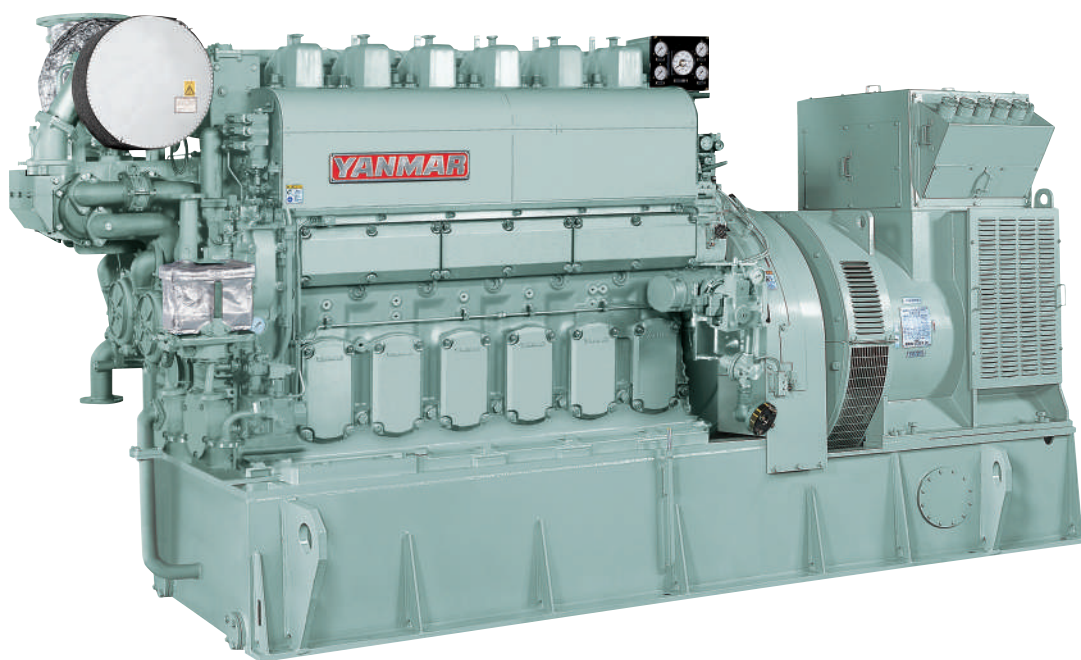
- The rated output is based on the "Prime Power" rating.
- The rated output of the generator is based on the bylaw of generator efficiency JEM1355.
- The value can vary depending on the generator manufacturer, equipment specification, accessories etc.
- Specifications are subject to change without notice for the incorporation of improvements.

**YANMAR**

Medium Speed Diesel Engine

6EY18ALW

750kWe



High efficiency & performance

- Designed for the best balance of combustion and high mechanical efficiency using YANMAR simulation analytical technology

High reliability & durability

- Exhaust valves made using Nimonic alloy with specially cladded valve-faces
- Special chrome plated piston rings and specially honed cylinder sleeve
- 2-stage air-cooler for H.F.O. burning

Reduced environmental burden

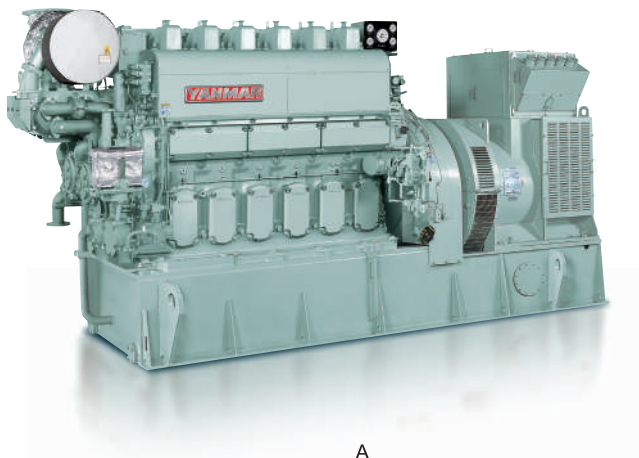
- YANMAR original combustion system and high-pressure Miller-cycle system

Easy maintenance & expert service

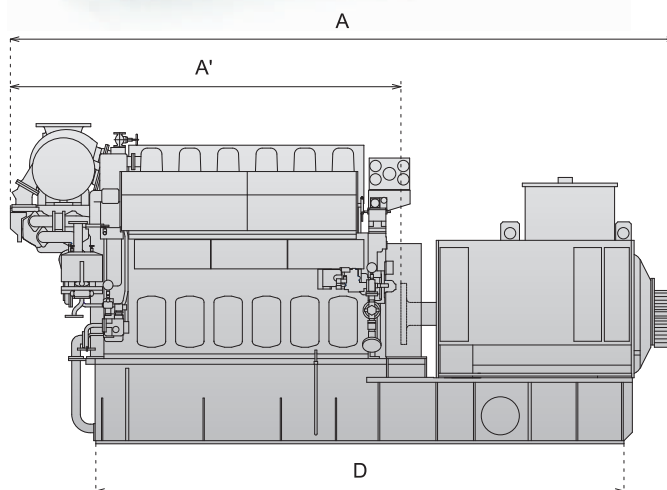
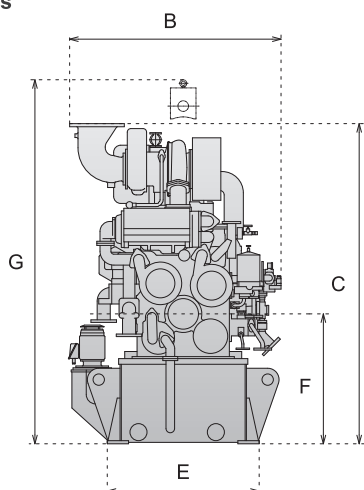
- Designed for easy installation with all piping connections on engine front side
- Lubrication oil strainer, oil cooler and thermostat are built into the engine
- Engine control, operation and lubrication oil priming pump panels are mounted on the engine
- Hydraulic clamping method for main bolts
- Expert and comprehensive support for long-term use by our worldwide service network



Medium Speed Diesel Engine
6EY18ALW



Dimensions



G : Minimum height for removing piston

Model	A	A'	B	C	D	E	F	G
6EY18ALW	4680	2751	1489	2255	3720	1070	915	2564

Models may vary from images shown depending on the specification or options chosen.

Specifications

Model			6EY18ALW	
Frequency			50Hz	60Hz
Generator	Rated Output	kWe	750	
	Type		3-Phase Brushless	
	Voltage	V	~6600	
	No. of Poles	P	6	8
	Power Factor	%	80(lagging)	
Diesel Engine	Rated Output	kW(HP)	800(1073)	
	Type		Vertical water-cooled 4-stroke Diesel	
	No. of Cylinders		6	
	Bore × Stroke	mm	180 × 280	
	Rated Speed	min ⁻¹	1000	900
Total Weight (Gen.Set)		kg	12100	

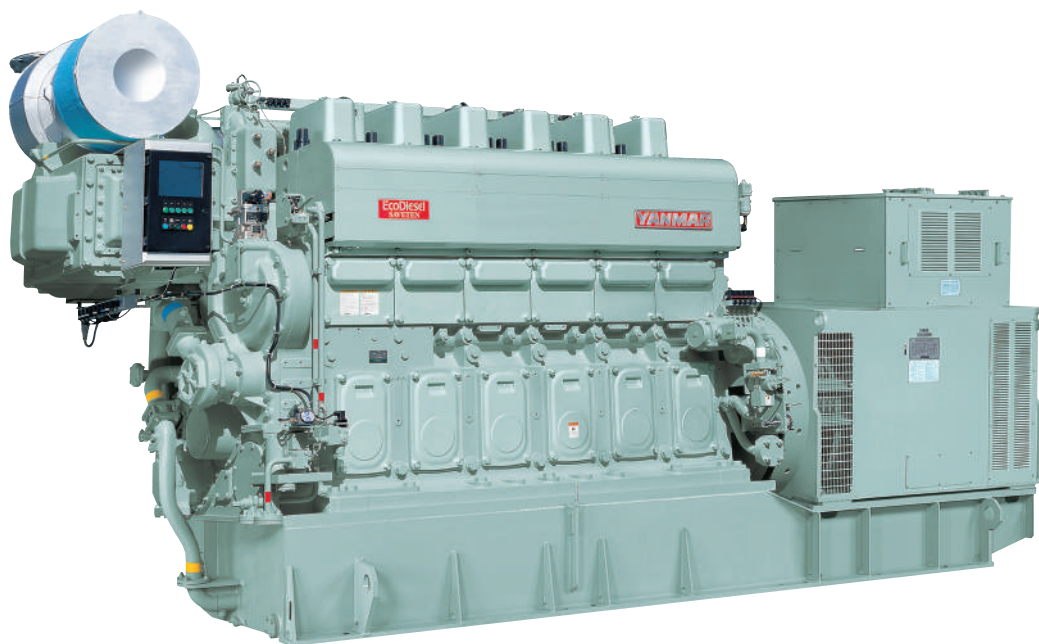
- The rated output is based on the "Prime Power" rating.
- The rated output of the generator is based on the bylaw of generator efficiency JEM1355.
- The value can vary depending on the generator manufacturer, equipment specification, accessories etc.
- Specifications are subject to change without notice for the incorporation of improvements.

**YANMAR**

Medium Speed Diesel Engine

6EY22ALW

1250kWe



High efficiency & performance

- Designed for the best balance of combustion and high mechanical efficiency using YANMAR simulation analytical technology

High reliability & durability

- Exhaust valves made using Nimonic alloy with specially clad valve-faces
- Special chrome plated piston rings and specially honed cylinder sleeve
- 2-stage air-cooler for H.F.O. burning

Reduced environmental burden

- YANMAR original combustion system and high-pressure Miller-cycle system

Easy maintenance & expert service

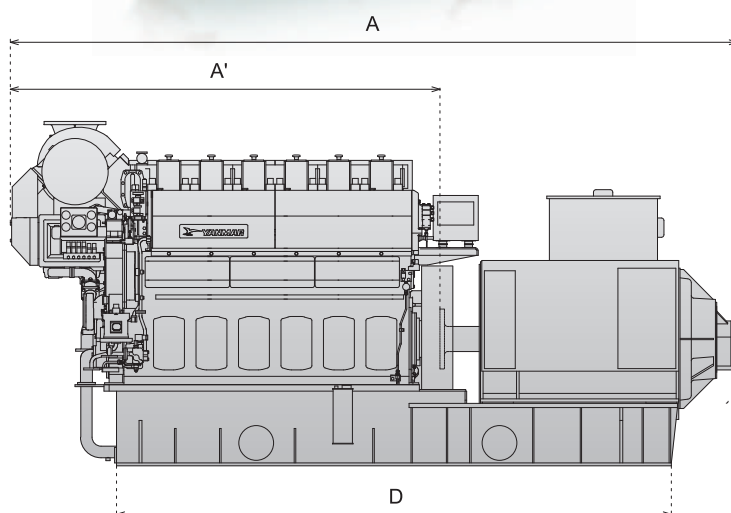
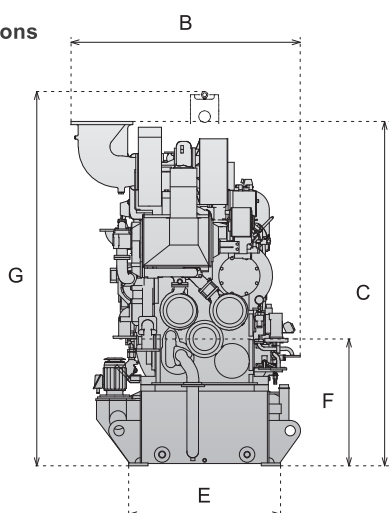
- Designed for easy installation with all piping connections on engine front side
- Lubrication oil strainer, oil cooler and thermostat are built into the engine
- Engine control, operation and lubrication oil priming pump panels are mounted on the engine
- Hydraulic clamping method for main bolts
- Expert and comprehensive support for long-term use by our worldwide service network



Medium Speed Diesel Engine
6EY22ALW



Dimensions



G : Minimum height for removing piston

Model	A	A'	B	C	D	E	F	G
6EY22ALW	5647	3337	1782	2675	4310	1180	985	2907

Models may vary from images shown depending on the specification or options chosen.

Specifications

Model			6EY22ALW	
Frequency			50Hz	60Hz
Generator	Rated Output	kWe	1250	
	Type		3-Phase Brushless	
	Voltage	V	~6600	
	No. of Poles	P	6	8
	Power Factor	%	80(lagging)	
Diesel Engine	Rated Output	kW(HP)	1370(1838)	
	Type		Vertical water-cooled 4-stroke Diesel	
	No. of Cylinders		6	
	Bore × Stroke	mm	220 × 320	
	Rated Speed	min ⁻¹	1000	900
Total Weight (Gen.Set)		kg	18100	

- The rated output is based on the "Prime Power" rating.
- The rated output of the generator is based on the bylaw of generator efficiency JEM1355.
- The value can vary depending on the generator manufacturer, equipment specification, accessories etc.
- Specifications are subject to change without notice for the incorporation of improvements.

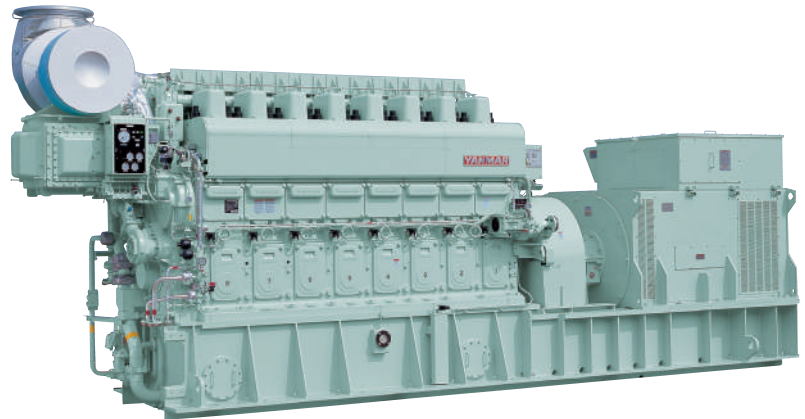
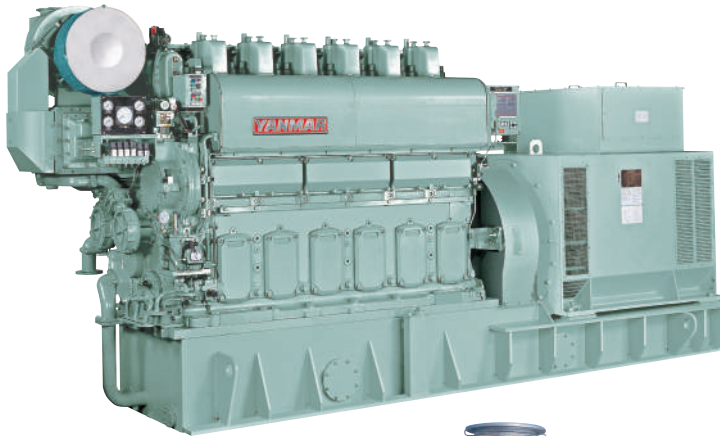
**YANMAR**

Medium Speed Diesel Engine

6EY26LW / 8EY26LW

1720kWe

2300kWe



High efficiency & performance

- Designed for the best balance of combustion and high mechanical efficiency using YANMAR simulation analytical technology

High reliability & durability

- Exhaust valves made using Nimonic alloy with specially clad valve-faces
- Special chrome plated piston rings and specially honed cylinder sleeve
- 2-stage air-cooler for H.F.O. burning

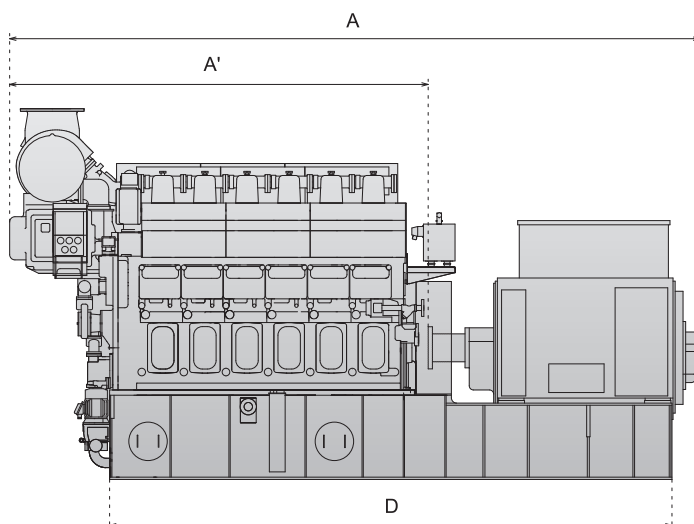
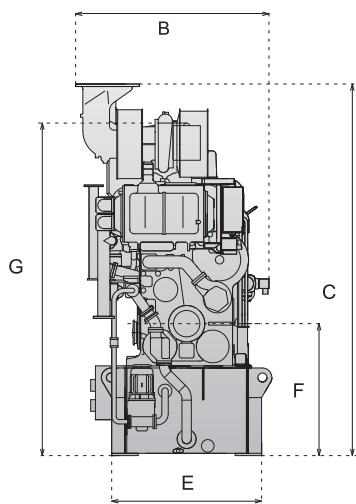
Reduced environmental burden

- YANMAR original combustion system and high-pressure Miller-cycle system

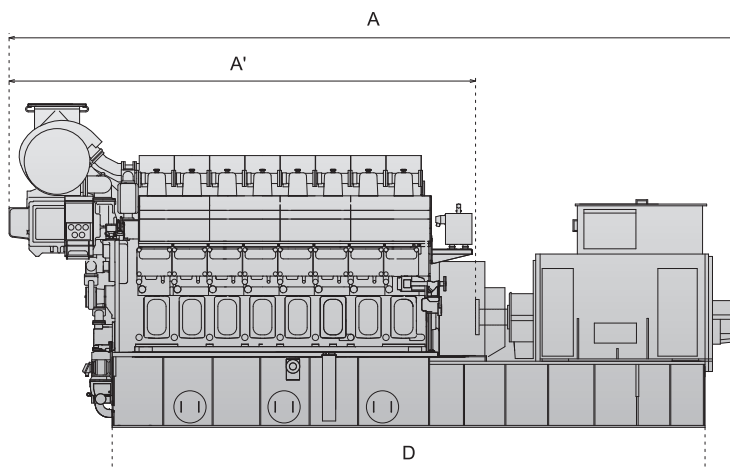
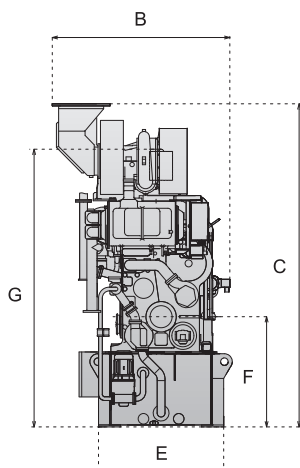
Easy maintenance & expert service

- Designed for easy installation with all piping connections on engine front side
- Lubrication oil strainer, oil cooler and thermostat are built into the engine
- Engine control, operation and lubrication oil priming pump panels are mounted on the engine
- Hydraulic clamping method for main bolts
- Expert and comprehensive support for long-term use by our worldwide service network

Dimensions



Dimensions



G : Minimum height for removing piston

Model	A	A'	B	C	D	E	F	G
6EY26LW	6774	3974	1847	3520	5270	1420	1250	3150
8EY26LW	8418	5290	2030	3665	6840	1420	1250	3150

Models may vary from images shown depending on the specification or options chosen.

Specifications

Model			6EY26LW		8EY26LW	
Frequency			50Hz	60Hz	50Hz	60Hz
Generator	Rated Output	kWe	1720		2300	
	Type		3-Phase Brushless		3-Phase Brushless	
	Voltage	V	~6600		~6600	
	No. of Poles	P	8	10	8	10
	Power Factor	%	80(lagging)		80(lagging)	
Diesel Engine	Rated Output	kW(HP)	1840(2467)		2450(3286)	
	Type		Vertical water-cooled 4-stroke Diesel		Vertical, water-cooled, 4-stroke Diesel	
	No. of Cylinders		6		8	
	Bore × Stroke	mm	260 × 385		260 × 385	
	Rated Speed	min ⁻¹	750	720	750	720
Total Weight (Gen.Set)			30600		45000	

•The rated output is based on the "Prime Power" rating.

•The rated output of the generator is based on the bylaw of generator efficiency JEM1355.

•The value can vary depending on the generator manufacturer, equipment specification, accessories etc.

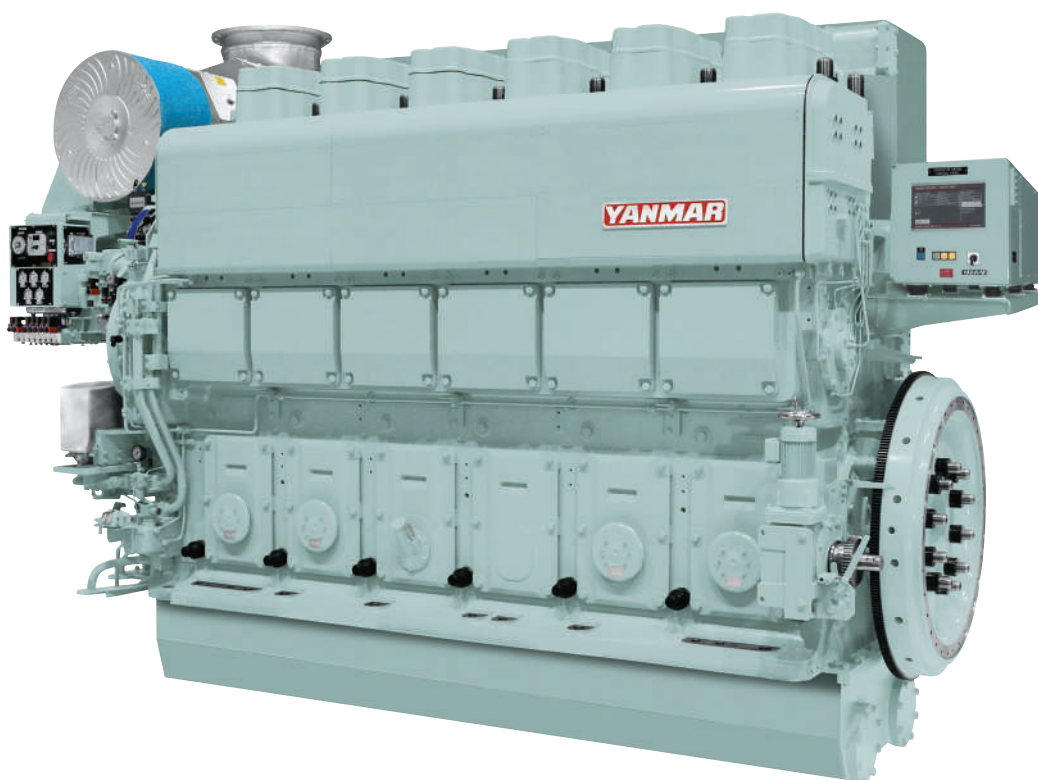
•Specifications are subject to change without notice for the incorporation of improvements.

**YANMAR**

Medium Speed Diesel Engine

6EY33LW

3400kWe



High efficiency & performance

- Designed for the best balance of combustion and high mechanical efficiency using YANMAR simulation analytical technology

High reliability & durability

- Exhaust valves made using Nimonic alloy with specially cladded valve-faces
- Special chrome plated piston rings and specially honed cylinder sleeve
- 2-stage air-cooler for H.F.O. burning

Reduced environmental burden

- YANMAR original combustion system and high-pressure Miller-cycle system

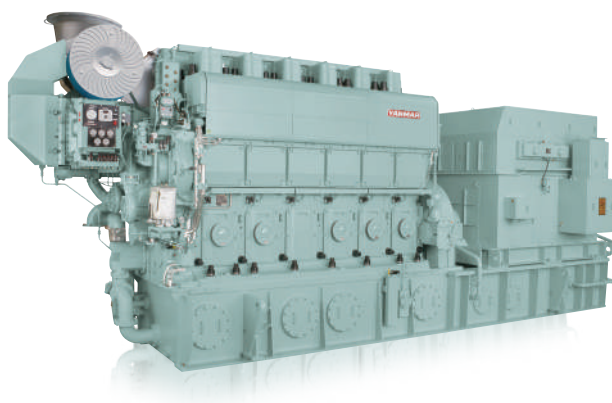
Easy maintenance & expert service

- Designed for easy installation with all piping connections on engine front side
- Lubrication oil strainer, oil cooler and thermostat are built into the engine
- Engine control, operation and lubrication oil priming pump panels are mounted on the engine
- Hydraulic clamping method for main bolts
- Expert and comprehensive support for long-term use by our worldwide service network

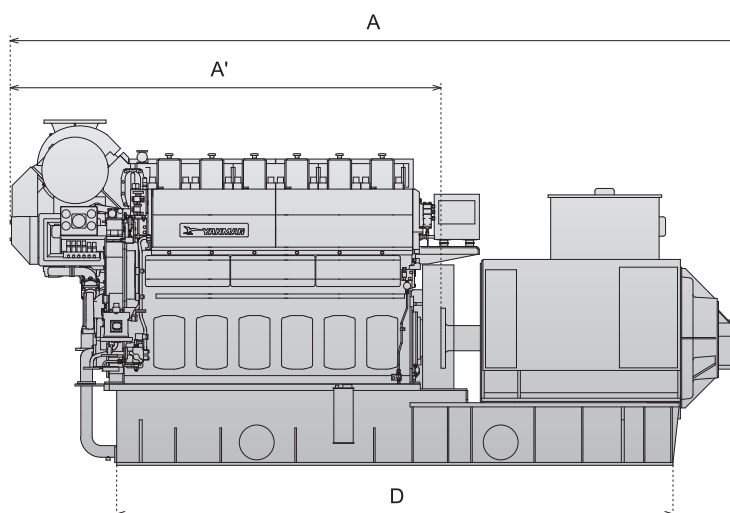
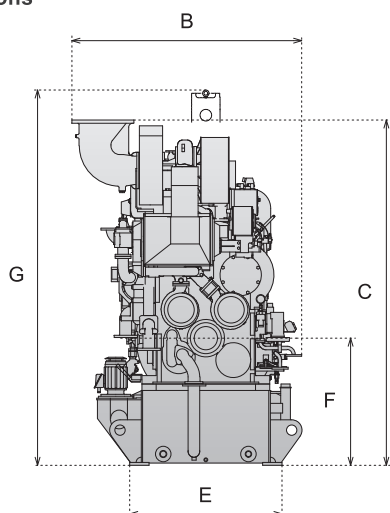


Medium Speed Diesel Engine

6EY33LW



Dimensions



G : Minimum height for removing piston

Model	A	A'	B	C	D	E	F	G
6EY33LW	8950	5280	2355	3895	7130	1780	1370	3742

Models may vary from images shown depending on the specification or options chosen.

Specifications

Model			6EY33LW	
Frequency			50Hz	60Hz
Generator	Rated Output	kWe	3400	
	Type		3-Phase Brushless	
	Voltage	V	~6600	
	No. of Poles	P	8	10
	Power Factor	%	80(lagging)	
Diesel Engine	Rated Output	kW(HP)	3600	
	Type		Vertical water-cooled 4-stroke Diesel	
	No. of Cylinders		6	
	Bore × Stroke	mm	330 × 440	
	Rated Speed	min ⁻¹	750	720
Total Weight (Gen.Set)		kg	63400	

•The rated output is based on the "Prime Power" rating.

•The rated output of the generator is based on the bylaw of generator efficiency JEM1355.

•The value can vary depending on the generator manufacturer, equipment specification, accessories etc.

•Specifications are subject to change without notice for the incorporation of improvements.

**YANMAR**

WORLDWIDE SERVICE NETWORK



EUROPE

NETHERLANDS

COUNTRY CODE " 31 "

- A** **YANMAR EUROPE B.V. (YEU)**
TEL: 36-5493200
WEB: yanmar.eu/
- NICOVERKEN HOLLAND B.V.**
TEL: 10-2380999
E-MAIL: shiprepair@nicoverken.nl
WEB: www.nicoverken.nl
- FUJI TRADING (MARINE) B.V.**
TEL: 10-429-8833

NORWAY

COUNTRY CODE " 47 "

- B** **YANMAR NORGE AS**
TEL: 6483-4350
E-MAIL: yanmar@yanmar.no
WEB: www.yanmar.no
- MARITIM MOTOR TROMSØ AS**
TEL: 9519-5425
E-MAIL: ronny@maritim-motor.no
WEB: www.maritim-motor.no
- ANLEGG OG MARINE SERVICE AS**
TEL: 5163-7500
EMERGENCY PHONE: 4040-1621
E-MAIL: post@anlegg-marine.no
WEB: www.anlegg-marine.no
- MARITIM MOTOR AS**
TEL: 7118-2270
E-MAIL: ronny@maritim-motor.no
WEB: www.maritim-motor.no
- LARSNES MEK. VERKSTED AS**
TEL: 7002-6400
E-MAIL: jarle@larsnes-mek.no
WEB: www.larsnes-mek.no

GREECE

COUNTRY CODE " 30 "

- a** **YANMAR ENGINEERING CO.,LTD.**
GREECE LIAISON OFFICE
TEL: 210-922-2481
E-MAIL: yanmargr@tee.gr/
yanmar@weboffice.gr

GERMANY

COUNTRY CODE " 49 "

- NIPPON DIESEL SERVICE**
TEL: 40-3177100

ICELAND

COUNTRY CODE " 354 "

- MARAS E.H.F**
TEL: 555-6444
E-MAIL: maras@maras.is
WEB: www.maras.is

U.K.

COUNTRY CODE " 44 "

- ROYSTON LIMITED**
TEL: 191-295-8000
E-MAIL: chris.hails@royston.co.uk
WEB: www.royston.co.uk

FRANCE

COUNTRY CODE " 33 "

- ITOCHU FRANCE S.A.S**
TEL: 01-4538-3534
E-MAIL: giro@itochu.fr
WEB: www.itochu.eu.com

SPAIN

COUNTRY CODE " 34 "

- SKANDIAVERKEN, S.L.**
TEL: 94-452-0816
E-MAIL: skv@skvbermeo.com
WEB: www.skvgroup.es

ITALY

COUNTRY CODE " 39 "

- NAVALCANTIERI ITALIA SRL**
TEL: 081-267-729
E-MAIL: navalcantieri@navalcantieri.org
WEB: www.navalcantieri.org

POLAND

COUNTRY CODE " 48 "

- CASSIOPEIA LTD.**
TEL: 69-0902-662
E-MAIL: info@cassiopeia-service.com
WEB: www.cassiopeia-service.com

LITHUANIA

COUNTRY CODE " 370 "

- GARANT SERVICE**
TEL: 46-340-940
E-MAIL: order@garant.lt
WEB: www.garantservice.lt

RUSSIA

COUNTRY CODE " 7 "

- YANMAR RUS LLC**
TEL: 495-232-2135
WEB: www.yanmarrus.ru

UKRAINE

COUNTRY CODE " 380 "

- ELECTRIC ENGINEERING LTD.**
TEL: 67-5180-487
E-MAIL: vab@eleng.biz
WEB: www.eleng.biz

TURKEY

COUNTRY CODE " 90 "

- SAKURA MARINE DENİZ ENDÜSTRİSİ VE DİŞ TİC.LTD.ŞTİ.**
TEL: 21-6494-4923
E-MAIL: info@sakura-marine.com
WEB: www.sakura-marine.com

AFRICA

NAMIBIA

COUNTRY CODE " 264 "

- NAMIBDIESEL CC**
TEL: 064-203-971
E-MAIL: info@namibdiesel.com.na
WEB: www.namibdiesel.com.na

SOUTH AFRICA

COUNTRY CODE " 27 "

- SEASCAPE MARINE SERVICES (PTY) LTD.**
TEL: 21-511-8201
E-MAIL: info@seascapemarine.co.za
WEB: www.seascapemarine.co.za

SEYCHELLES

COUNTRY CODE " 248 "

- POWER MARINE & ACCESSORIES**
TEL: 460-1005
E-MAIL: john.vidot@pmaseyelles.com

MAURITIUS

COUNTRY CODE " 230 "

- CHANTIER NAVAL**
TEL: 216-9517
E-MAIL: yanmar@cnoi.info
WEB: www.cnoi.info

MIDDLE EAST

U.A.E.

COUNTRY CODE " 971 "

- b** **YANMAR ENGINEERING CO., LTD.**
DUBAI LIAISON OFFICE
TEL: 4-341-8787
E-MAIL: ymrdubai@eim.ae
- ALBWARDY MARINE ENGINEERING (L.L.C)**
TEL: 4-324-1001, 324-1561
WEB: www.albwardymarine.com
- GOLTENS CO. LTD. DUBAI BRANCH**
TEL: 4-324-1642
WEB: www.goltens.com

ARAB REPUBLIC OF EGYPT

COUNTRY CODE " 20 "

- **MAPSO MARINE PROPULSION & SUPPLY S.A.E.**
TEL: 22-6984-777
E-MAIL: mapso@mapso.com
WEB: www.mapso.com
- **MAPSO-ALEXANDRIA OFFICE**
TEL: 3-487-3453

JORDAN

COUNTRY CODE " 962 "

- **AL ZAMAN GROUP LLC**
TEL: 6-565-5261

IRAN

COUNTRY CODE " 98 "

- **SADAF KARAN BOUSHEHR CO.**
TEL: 773-3553400
E-MAIL: dehghani@sadafkaran.com
WEB: www.sadafkaran.com

QATAR

COUNTRY CODE " 974 "

- **QATAR NAVIGATION QPSC**
TEL: 4-494-7000

ASIA

JAPAN

COUNTRY CODE " 81 "

- **YANMAR ENERGY SYSTEM CO., LTD.**

■ **Global Operations Division**
E-MAIL: yes_projectgroup@yanmar.com
WEB: yanmar.com/global/

- **YANMAR ENGINEERING CO., LTD.**

■ **YANMAR ENGINEERING (HEAD OFFICE)**
TEL: 6-6489-8045
WEB: www.yanmar.co.jp/ye/
■ **OVERSEAS ENGINEERING DIVISION.**
TEL: 6-6489-8048

INDIA

COUNTRY CODE " 91 "

- **YANMAR INDIA PRIVATE LIMITED**
TEL: 22-2781-0975
- **IND-AUST MARITIME PVT LTD.**
TEL: 22-2763-3178
E-MAIL: meenasingh@indaust.com

CHINA

COUNTRY CODE " 86 "

- **YANMAR ENGINE (SHANGHAI) CO., LTD.**
TEL: 21-2312-0688
WEB: yanmar.com/cn/
- **GOLTENS SHANGHAI CO., LTD**
TEL: 21-58186628
E-MAIL: shanghai@goltens.com
- **TIANJIN PORT TUG-BOAT & LIGHTER COMPANY / YANMAR ENGINE SERVICE CENTER**
TEL: 22-2570-7510
- **DALIAN WANFANG MARINE TECHNOLOGY CO., LTD**
TEL: 411-84799000
E-MAIL: wf@china-wf.com

- **ZHOUSHAN IMC-YY SHIPYARD & ENGINEERING CO.,LTD.**
TEL: 580-3696572
E-MAIL: weilicheng@imc-yy.com
WEB: www.imc-yy.com

SINGAPORE

COUNTRY CODE " 65 "

- **YANMAR ASIA (SINGAPORE) CORPORATION PTE. LTD.**
TEL: 6595-4200
WEB: yanmar.com/sg/
- **CHONG LEE LEONG SENG CO., (PTE) LTD.**
TEL: 6264-2922

VIETNAM

COUNTRY CODE " 84 "

- **YANMAR ASIA (SINGAPORE) CORPORATION PTE LTD RESIDENT REPRESENTATIVE OFFICE HO CHI MINH CITY**
TEL: 8-3923-8063
- **HAI PHONG TRADING AND ENGINEERING SERVICES COMPANY LIMITED (HATESCO)**
TEL: 31-3504-117
E-MAIL: hatesco@gmail.com

HONG KONG

COUNTRY CODE " 852 "

- **YANMAR ENGINEERING (HK) CO., LTD.**
TEL: 2833-9032
E-MAIL: yanmarhk@yanmarhk.com.hk

TAIWAN

COUNTRY CODE " 886 "

- **YANMAR ENGINEERING CO., LTD. TAIWAN BRANCH**
TEL: 7-815-3156
E-MAIL: yanmar-service@umail.hinet.net
- **YANMAR ENGINEERING CO., LTD. TAIWAN BRANCH TAIPEI OFFICE**
TEL: 2-8712-3150/3151
E-MAIL: yanmar-service@umail.hinet.net
- **YEE FOO MARINE INDUSTRIAL CO., LTD.**
TEL: 2-8712-0848
- **SEIKOH CO., LTD.**
TEL: 7-815-3156
E-MAIL: yanmar-service@umail.hinet.net

PHILIPPINES

COUNTRY CODE " 63 "

- **YANMAR ASIA (SINGAPORE) CORPORATION PTE. LTD. PHILIPPINES OFFICE**
TEL: 45-499-1541/1542
- **SEAPOWERS TRADING & INDUSTRIAL SERVICES**
TEL: 917-500-3017
E-MAIL: seapowers@pltdsl.net
- **PHILL_NIPPON KYOEI CORPORATION**
TEL: 400-9130
E-MAIL: inquiry@philnippon.com.ph
- **AVP MARINE AND INDUSTRIAL SERVICE INC.**
TEL: 32-462-2955
E-MAIL: service.avmarine@avmes.com
- **AZUMI CORPORATION**
TEL: 47-250-0806
E-MAIL: fujii.subic@gmail.com

KOREA

COUNTRY CODE " 82 "

- **HWA ILL TRADING CO., LTD.**
TEL: 51-412-6385
E-MAIL: hwaill@hwaill.co.kr
- **PLUS SERVICE CO.**
TEL: 51-745-8200-1
E-MAIL: plusbusan@gmail.com
- **CHIBA MARINE KOREA CO., LTD.**
TEL: 51-418-8998
E-MAIL: chibako@korea.com

BANGLADESH

COUNTRY CODE " 880 "

- **TSI MARINE LIMITED**
TEL: 317-268-46
E-MAIL: tsimarinettd@gmail.com

MYANMAR

COUNTRY CODE " 95 "

- **UMG MYANMAR**
TEL: 1-645178
E-MAIL: sale-div@winstrategic.com.mm
- **UNITED ENGINEERING CO., LTD**
TEL: 1-571321
WEB: www.united-engineering.net

THAILAND

COUNTRY CODE " 66 "

- **STAR MARINE ENGINEERING CO., LTD**
TEL: 2-816-8001
E-MAIL: info@starmarineeng.com

MALAYSIA

COUNTRY CODE " 60 "

- **PANSAR COMPANY., SDN BHD**
TEL: 84-333366
- **CHONG LEE LEONG SENG ENTERPRISE SDN BHD**
TEL: 3-5632-1577

INDONESIA

COUNTRY CODE " 62 "

- **YANMAR JAKARTA SERVICE CENTER C/O P.T. PIONEER**
TEL: 21-385-8526
- **P.T. PIONEER**
TEL: 21-344-8486

OCEANIA

AUSTRALIA

COUNTRY CODE " 61 "

- **FOGACS CAIRNCROSS DOCKYARD PTY LTD.**
TEL: 7-322-70856
- **WATERSIDE ENGINEERING PTY LTD.**
TEL: 3-9314-3722
E-MAIL: waterside@waterside-eng.com
- **JAITCO**
TEL: +81-89-956-8927
- **JAPAN MARINE ENGINEERING CO.,LTD**
TEL: 3-9555-5277
E-MAIL: sales@jmeaust.com.au

PAPUA NEW GUINEA

COUNTRY CODE " 675 "

- **LUTHERAN SHIPPING**
TEL: 42-6190
TELEX: NE 44172

NORTH AMERICA

U.S.A.

COUNTRY CODE " 1 "

- **YANMAR AMERICA CORP.**
TEL: 770-877-9894
WEB: yanmar.com/global/
- **MARINE TURBO & DIESEL INC.**
TEL: 510-236-3525
- **GOLTENS MIAMI CO. INC.**
TEL: 305-576-4410
- **TRANSMARINE PROPULSION SYSTEM, INC**
TEL: 813-830-9180
- **BAY DIESEL & GENERATOR**
TEL: 757-485-0075
- **UNITED WORLD ENTERPRISE, INC**
TEL: 713-641-1915
- **GOLTENS HOUSTON INC**
TEL: 713-487-4900

SOUTH AMERICA

BRAZIL

COUNTRY CODE " 55 "

- **YANMAR SOUTH AMERICA LTDA**
TEL: 19-3801-9200
WEB: www.yanmar.com.br
- **YANMAR SOUTH AMERICA MANAUS BRANCH**
TEL: 92-3347-9205
- **METALOCK BRASIL LTDA**
TEL: 13-3226-4686
E-MAIL: santos@metalock.com.br
WEB: www.metalock.com.br
- **MANUTENÇÃO E REPAROS DE MOTORES DIESEL (ROMAGA)**
TEL: 21-2263-3115
WEB: www.romaga.com.br

EQUADOR

COUNTRY CODE " 593 "

- **MOTORES DEL PACÍFICO S.A.**
Tel : 4-2174-067 , 4-6033-350
WEB: motoresdelpacifico.com

PARAGUAY

COUNTRY CODE " 595 "

- **ADRIASOL S.A.**
TEL: 21-756099
WEB: www.adriasolsa.com/

ARGENTINE

COUNTRY CODE " 54 "

- **TALLERES LILO S.A.**
TEL: 11-4222-1289
WEB: www.tallereslilo.com.ar/
- **VN PROPULSION S.R.L**
TEL: 011-4553-4026
WEB: vnpropulsion.com/en
- **JOSE V. NATALICHO**
TEL: 911-4300-8226



Check List for Inquiries

Photocopy and send this sheet to YANMAR(Tokyo).
FAX: +81-3-6733-4251 Email: yes_projectgroup@yanmar.com

INQUIRIES FOR

_____ kW (_____ kVA) DIESEL GENERATOR SET

- 1 Destination (City and Country) : _____
- 2 Owner's name and Project name : _____
- 3 Number of sets : _____ set (s) / Site : _____ set (s)
- 4 Approx. date of delivery : _____
- 5 In case of tender, tender closing date : _____
- 6 Output : _____ kW (_____ kVA , 3Phase _____ Wire _____ Volt _____ Hz _____ min⁻¹
(Power factor 0.8 lagging)
- 7 Service : ☐ Continuous / ☐ Standby (Main failure)
 ✓ Working hours per year _____ h , ✓ Working hours per day _____ h
 ✓ Required load condition (Max : _____ kW , Min : _____ kW , Average : _____ kW)
- 8 Fuel : ☐ Diesel Oil / ☐ H.F.O. (_____ mm²/s)
- 9 Cooling method : ☐ Radiator (Remote / mounted) / ☐ Cooling tower and hear exchanger
- 10 Parallel operation with D/G : ☐ No / ☐ Yes (number of sets _____)
- 11 Site conditions : ☐ Standard ☐ Your requirement
 ✓ Ambient temp ----- 40°C _____ °C ~ _____ °C
 ✓ Altitude (max. above sea level) ----- 300m _____ m
 ✓ Relative humidity ----- 85% _____ %
 ✓ Installation ☐ Indoor / ☐ Outdoor
 ✓ Other (specify) _____
- 12 Other requirements : NOx level : _____ ppm (mg/Nm³) at O₂ 13% basis
 Sound level : _____ dB (A) at 1m from : (_____)
-

Above inquiry by Name _____
 Company _____
 Tel _____
 E-mail _____
 Date _____

GLOBAL MANUFACTURING and SALES NETWORK



EUROPE

Sales/Service

- ① **YANMAR RUS LLC**
Office 303, Roshchinskiy proyezd, 8, 115419, Moscow, Russia
TEL / FAX: +7-495-232-2102
- ② **YANMAR TURKEY MAKINE A.S.**
Mansuroglu Mah, 286 Sokak No:2-A Gumus Plaza - Bayrakli - IZMIR - TURKEY
TEL: +90-232-435-51-52

ASIA

Sales/Service

- ③ **YANMAR ASIA (SINGAPORE) CORPORATION PTE LTD.**
4 Tuas Lane, Singapore 638613
TEL: +65-6861-3855 FAX: +65-6862-5195
- ④ **YANMAR INDIA PVT LTD.**
707, Real Tech Park, Sector 30/A, Vashi,
Navi Mumbai - 400703 (Maharashtra) India
TEL: +91-22-3969-4433 FAX: +91-22-3969-4410

JAPAN

Sales / Manufacturing

- ⑤ **POWER SYSTEM OPERATIONS DIVISION, BIWA PLANT**
Manufacture of small-power diesel engine systems and gas engine systems
- ⑥ **LARGE POWER PRODUCTS OPERATIONS DIVISION (AMAGASAKI FACTORY and TSUKAGUCHI FACTORY)**
Manufacture of large-power engine systems and gas turbines
- ⑦ **YANMAR ENERGY SYSTEM CO., LTD.**
AKIHABARA UDX18F, 14-1, 4-Choume, Sotokanda,
Chiyoda-ku, Tokyo, 101-0021 Japan
TEL: +81-3-6733-4250 FAX: +81-3-6733-4251

Contact us for product inquiries

E-mai: yes_projectgroup@yanmar.com FAX: +81-3-6733-4251

Yanmar Energy System Co., Ltd.
Project Group, Marketing & Sales Dept. Global Operations Division

Memo