



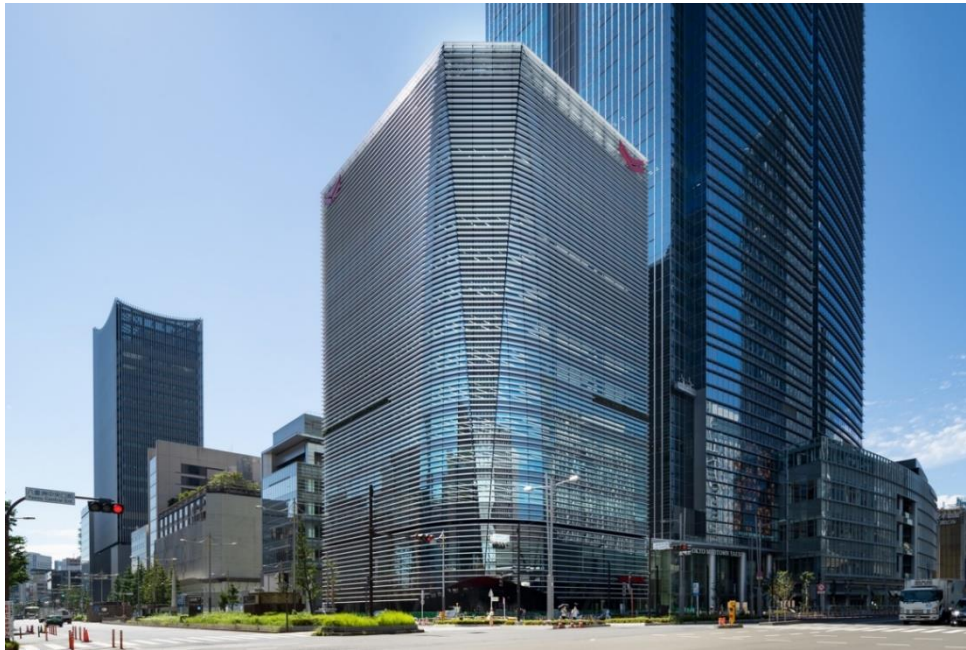
**YANMAR**

News Release

January 17, 2023

Yanmar Holdings Co., Ltd.

## Yanmar Holdings Opens New Building in Tokyo



YANMAR TOKYO

Osaka, Japan (January 17, 2023) - Yanmar Holdings Co., Ltd. has celebrated the official opening of its new Tokyo offices, YANMAR TOKYO, located in the Yaesu area directly opposite Tokyo station. Produced by creative director Kashiwa Sato, YANMAR TOKYO's 14 floors and three basement levels house an interactive gallery and a variety of restaurants and stores, in addition to company offices.

YANMAR TOKYO will be an important base for growing an understanding of HANASAKA, which means "to make a flower bloom" in Japanese and is the company's values that underlie the spirit and vision of Yanmar's founder, Magokichi Yamaoka. HANASAKA has helped Yanmar thrive over its more than a century of history, and the company has sought to nurture this spirit through a wide range of activities in the fields of sports, art, and culture, based on a philosophy of believing in people's potential and encouraging them to take on challenges. This culture of HANASAKA has been the basis not only of Yanmar's business activities, but also its efforts to nurture the next generation and foster a culture where everyone can realize their potential.

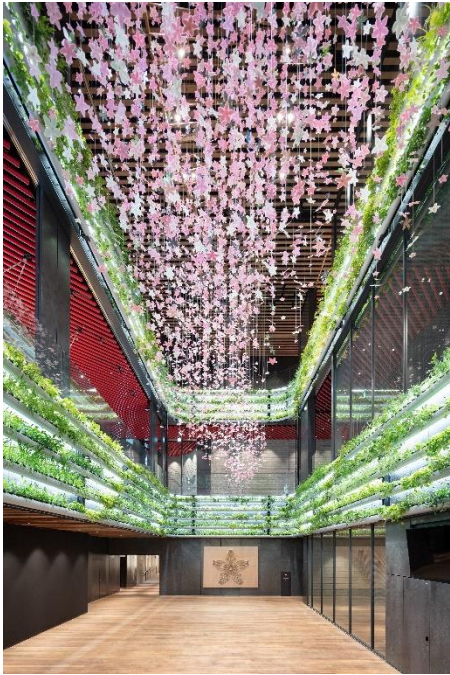
As one of Yanmar's HANASAKA initiatives, YANMAR TOKYO has a focus on rice and agriculture. Japan's staple food, rice is central to the country's cuisine and culture and rice farming is a primary

industry that has supported Japan throughout its history. YANMAR TOKYO will be a location that brings consumers closer to the farmers that produce their food and will provide information on food and agriculture with a focus on rice, including efforts to support new farmers. The Yanmar Kome\* Gallery is an interactive gallery that utilizes digital technology to provide visitors with an opportunity to learn about the history and current state of rice farming and to get a glimpse of its future, while many of YANMAR TOKYO's shops and restaurants are based on a theme of rice or feature it prominently.

\*Kome means "rice" in Japanese.



YANMAR KOME GALLERY



HANASAKA SQUARE

As it looks toward the next century of business, Yanmar's new Tokyo hub, YANMAR TOKYO will further expand the understanding of HANASAKA globally, and promote activities towards realizing people's full potential in A SUSTAINABLE FUTURE.

**About Yanmar**

With beginnings in Osaka, Japan, in 1912, Yanmar was the first ever to succeed in making a compact diesel engine of a practical size in 1933. A pioneer in diesel engine technology, Yanmar is a global innovator in a wide range of industrial equipment, from small and large engines, agricultural machinery

and facilities, construction equipment, energy systems, marine, to machine tools, and components — Yanmar's global business operations span seven domains. On land, at sea, and in the city, Yanmar provides advanced solutions to the challenges customers face, towards realizing A Sustainable Future. For more details, please visit the official website of [Yanmar Holdings Co., Ltd.](#)

Note: Information contained in the news release is valid at the time of publication and may differ from the most recently available information.

---

Inquiries

Corporate Communications, Yanmar

[newsroom@yanmar.com](mailto:newsroom@yanmar.com)