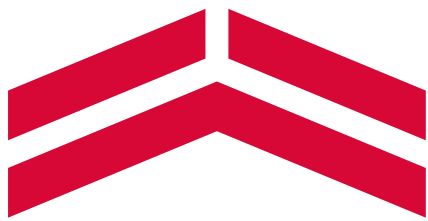


ENGLISH

YANMAR MUSEUM

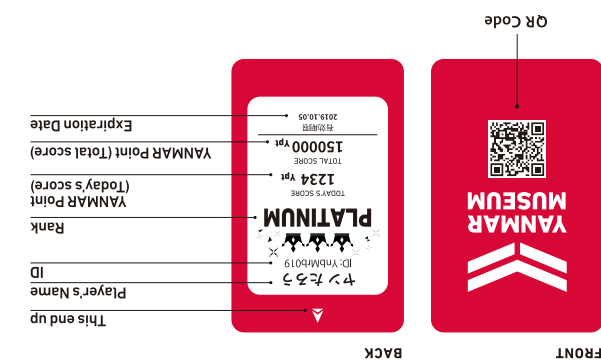


- Museum Rules**
- Smoking is prohibited in the museum. Photos are allowed in the museum, but please refrain from using flash and camera tripods as they may bother other patrons.
 - Eating and drinking is prohibited in the museum other than the designated locations.
 - Please refrain from entering the museum with pets. (Guide dogs and service dogs are allowed.)
 - Please do not lose your tickets or YANMAR card. (Lost tickets or cards will not be reissued.)
 - Reservations are required for the theater shows. Please understand that you may not enter after the reserved show time.
 - YANMAR Card is required to play the museum attractions.

03 Updating Points
Check your points by updating your card at the score keeping machine

02 How to use the YANMAR Card
Start your "challenge" by scanning the QR code on your YANMAR Card at each QR code reader!

01 Making an account
Register your YANMAR Card by creating an account and entering your nickname at the machines in the Challenge Area.
*You can update your account in the "Challenge Site" on the museum original website.

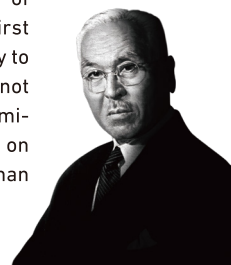


YANMAR CARD About the YANMAR Card

The founder of YANMAR

MAGOKICHI YAMAOKA

Magokichi Yamaoka is the founder of YANMAR, the creator of the world's first small-scale diesel engine. In his journey to provide a future filled with prosperity, not once did he give in to failure. His determination to overcome challenges lives on today as the company's DNA, more than 100 years after its establishment.



In 2016, we adopted the spirit of our founder as our new branding statement.

Our Brand Statement

A SUSTAINABLE FUTURE

— New value through technology —

The new value we aim to create

- VISION 01** An Energy-saving Society
- VISION 02** A Society Where People Can Work and Live with Peace of Mind
- VISION 03** A Society Where People Can Enjoy Safe and Plentiful Food
- VISION 04** A Society That Offers an Exciting Life Filled with Rich and Fulfilling Experiences

Enjoy a diverse line of limited-time merchandise and more that you won't find anywhere else such as YANMAR MUSEUM original goods and Premium Marche products.



Premium Marche BIWAKO
Enriching life through the blessings of quality food.
At Premium Marche BIWAKO, we serve delicious dishes made with fresh ingredients giving you a taste of the season with a special focus on rice.



RESTAURANT & SHOP

This is a space for a variety of workshop events.



Challenge Room

This is a multi-purpose hall perfect for small events such as recitals.



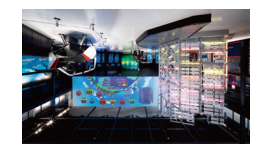
YANMAR MUSEUM HALL

The history of YANMAR, business projects, as well as historical engine models are explained through a digital timeline and graphics. You can also see the energy usage in real time optimized by YANMAR ENERGY SYSTEM CO.,LTD.



Exhibition Area

Experience YANMAR's spirit for overcoming challenges through many hands-on activities! More information on the back of the map!



Challenge Area

Access



Address 6-50 Sanwa-cho, Nagahama, Shiga, 526-0055 Japan

(By Train)
A 10 minute walk from Nagahama Station on the JR Hokuriku-Line.

(By Car)
A 10 minute drive from the Hokuriku Highway. Take the Nagahama Exit.

Parking Capacity of 44 cars.
*Busses may only drop off and pick up passengers.

Opening Hours **(Exhibition Room)**
10:00 AM to 5:30 PM (Front Desk 9:45 AM to 4:30 PM)
(Shop)
10:00 AM to 5:30 PM
(Restaurant)
Weekdays 11:00 AM to 2:30 PM (Last call at 2:00 PM)
Weekends/Holidays 11:00 AM to 5:00 PM (Last call at 4:30 PM)

Closed Every Monday (If a holiday falls on a Monday, the following weekday will be closed)
New Year's holiday
* If a warning is issued in Nagahama City due to bad weather such as a typhoon, it may be closed.

Advanced Reservations Visitors with reservations are given priority. Please make a reservation in advance or at front desk on the day.

Admission **Entrance Fee (per person)**
Adult : 900yen
Elementary and Middle School Students : 500yen
Children before school enrollment : Free
(Groups)
*100yen discount per person for groups of over 20 people.
*Discount available only on weekdays and only with a reservation.

Phone Number 0749-62-8887
FAX 0749-62-8780

Please refer to official website for more information on reservations.
www.yanmar.com/jp/museum/



Give it a try!
The Exciting Future Challenge

Here at YANMAR, we believe that challenging opens up for the future.

Magokichi Yamaoka, the founder of YANMAR wanted to help those in need to create a better future. In the unwavering spirit of challenge, he succeeded at developing the world's first small scale diesel engine.

This is a museum to help instill young generations with the same challenging spirit through exciting experiences.

YANMAR MUSEUM

01 WAKU WAKU ! Challenge Theater

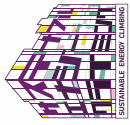
Please enjoy a film on the YANMAR spirit. Rising to the challenge for over a century.



CITY AREA

02 Sustainable Energy Climbing

Light up the town with your challenge!



03 Kid's Energy Athletic

Use your brain and body to escape the maze!



04 ZAK ZAK ! Power Shovel Challenge

Operate a real power shovel!



SEA AREA

05 Wakesurfing Boat Race

Drive a boat in open waters!



06 My Fish, My Ocean

Let's cultivate various fish and catch them!



LAND AREA

07 TAGAYASE ! Fields

Plow the fields with all your might!



08 Rhythm Engine

Move the engine to the Rhythm!



FOOTBALL STADIUM

09 Football Challenge

Receive a pass and kick the ball toward the goal! Who can get the highest score?



10 Cerezo Museum

チャレンジ+ CHALLENGE +

Learn more about food and energy!

- 11 Antarctic Discovery
- 12 Polished Rice Challenge
- 12 Lunch box Challenge
- 12 Energy Transfer Challenge

MY EARTH

13 My Earth

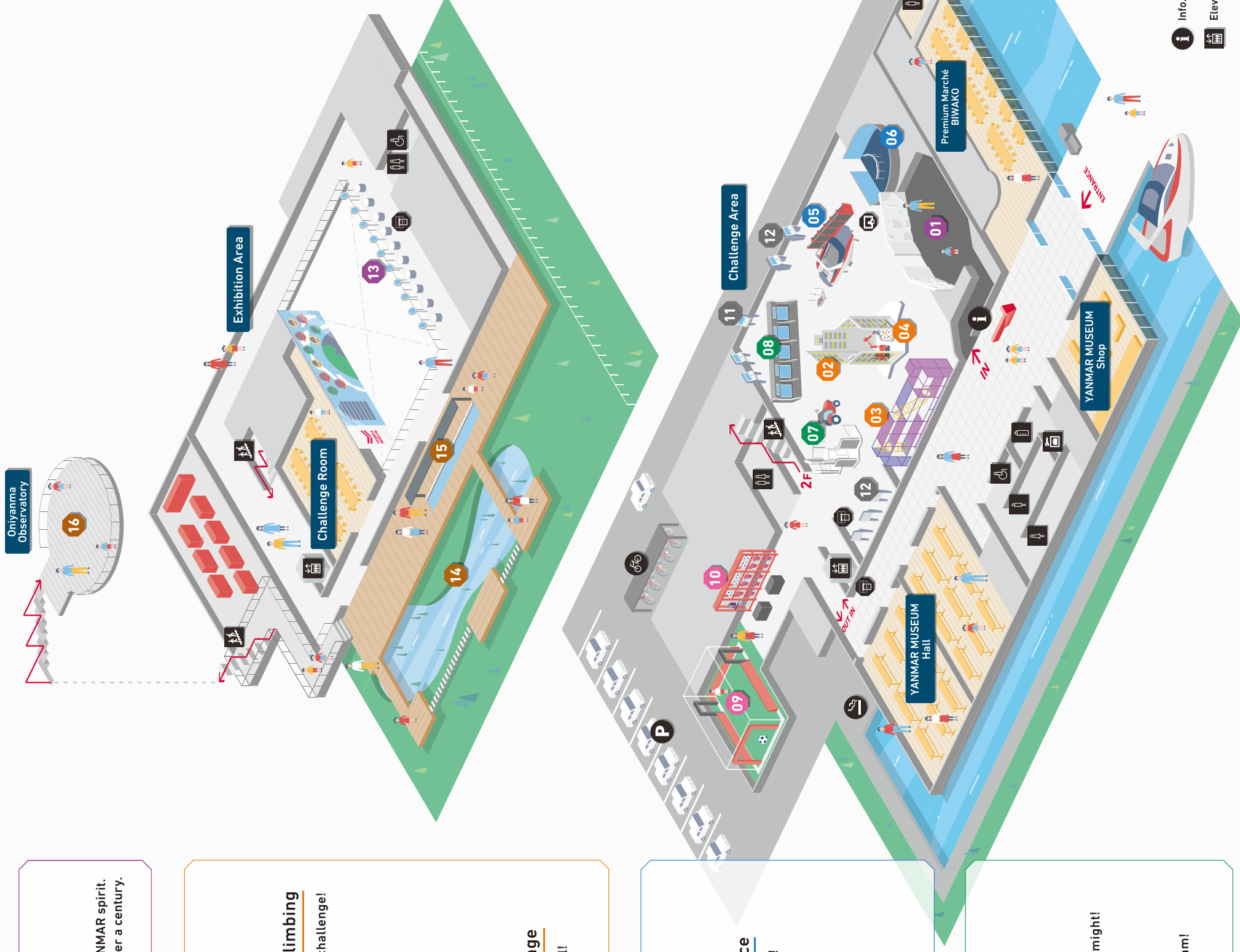
Look back on the challenges you took today!



YANMAR TERRACE

Get a little bit closer to nature!

- 14 Biotope on the Rooftop
- 15 Oniyama Footbath
- 16 Oniyama Observatory



- Score Keeping Machine
- Card issue machine
- Men's Restroom
- Women's Restroom
- Multi-purpose Restroom
- Baby's Room
- Locker
- Smoking Section
- Parking
- Bicycle Parking
- Info.
- Elevator
- Stairs