



YANMAR

News Release

July 30, 2025

Yanmar Holdings Co., Ltd.

YANMAR CAFE Opens at Tokyo Offices Celebrating New Possibilities for Rice



YANMAR CAFE

Osaka, Japan (July 30, 2025) — Yanmar Holdings Co., Ltd. will open YANMAR CAFE, produced by renowned creative director Kashiwa Sato, on August 2, 2025. The café will be located inside the Yanmar Kome* Gallery on the first floor of YANMAR TOKYO, a mixed-use facility situated in Tokyo's Yaesu area.

Opened in January 2023, YANMAR TOKYO was established under the company's HANASAKA philosophy, which centers on believing in people's potential and encourages new challenges. The complex serves as a hub for promoting the appeal and possibilities of rice—central to Japanese food culture—and agriculture, a primary industry that has supported Japan for generations.

The Yanmar Kome Gallery is an interactive space that offers content exploring the history and future of rice cultivation. Since its launch, the gallery has welcomed approximately 190,000 visitors.

The new YANMAR CAFE will be a takeout-focused café featuring Japanese sake ice cream from SAKEICE Tokyo Shop, which is located within YANMAR TOKYO and operated by Edamame Inc., as well as carefully selected varieties of amazake (a traditional sweet, fermented rice drink). Located just steps from Tokyo Station's Yaesu exit, the café offers a convenient stop for takeout

and includes a relaxing eat-in space.

Going forward, the Yanmar Kome Gallery aims to create new value by developing original rice-themed menu items and hosting events in collaboration with the café—inviting visitors to rediscover the appeal of rice.

*Kome means “rice” in Japanese

Overview of YANMAR CAFÉ

Location: 2-1-1 Yaesu, Chuo Ward, Tokyo, YANMAR TOKYO 1st floor, inside Yanmar Kome Gallery

Opening Hours: 10:00 AM to 5:00 PM

Closed: Every Monday

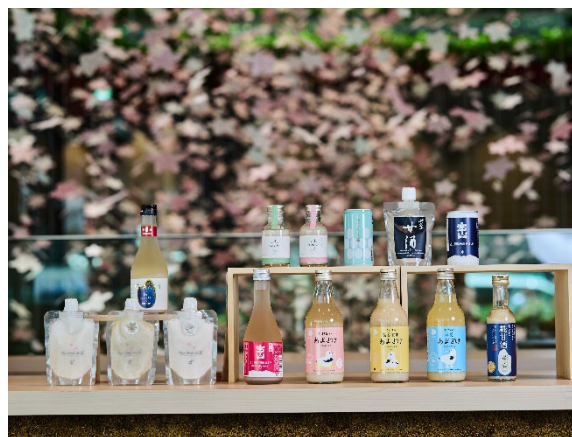
Official Website: <https://www.yanmar.com/jp/komegallery/yanmarcafe/> (Japanese)

Note: Opening hours and closed days follow the schedule of the Yanmar Kome Gallery. If Monday is a public holiday, the café will be open, and it will be closed the following day.

Sample Menu



Japanese sake ice cream



Amazake

About Yanmar

With beginnings in Osaka, Japan, in 1912, Yanmar was the first ever to succeed in making a compact diesel engine of a practical size in 1933. A pioneer in diesel engine technology, Yanmar is a global innovator in a wide range of industrial equipment, from small and large engines, agricultural machinery and facilities, construction equipment, energy systems, marine, to machine tools, and components — Yanmar’s global business operations span seven domains. On land, at sea, and in the city, Yanmar provides advanced solutions to the challenges customers face, towards realizing A Sustainable Future. For more details, please visit the official website of Yanmar Holdings Co., Ltd. <https://www.yanmar.com/global/about/>

About SAKEICE

SAKEICE is a premium ice cream that luxuriously incorporates sake. By using a generous amount of sake as an ingredient, it achieves a rich flavor that is characteristic of higher alcohol content. Through collaborations with sake breweries across Japan, SAKEICE introduces a new way to enjoy sake. For more information, visit <https://sakeice.jp/>

Note: Information contained in the news release is valid at the time of publication and may differ from the most recently available information.

Inquiries

Corporate Communications, Yanmar

newsroom@yanmar.com