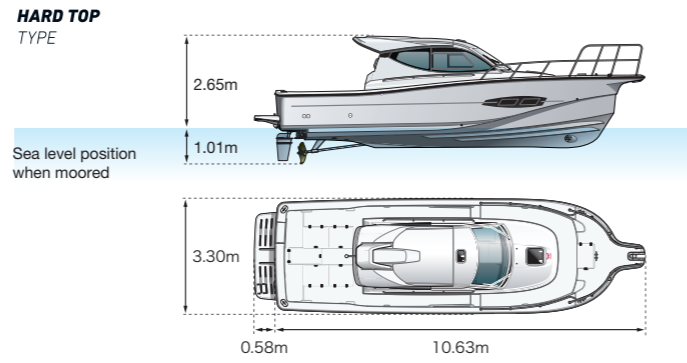
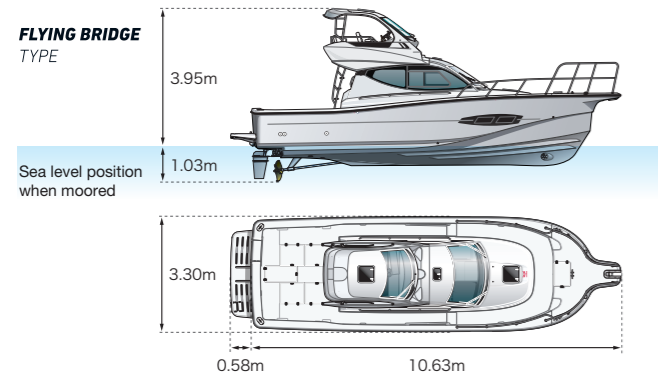


Pursuing a refreshing and comfortable ride



YANMAR

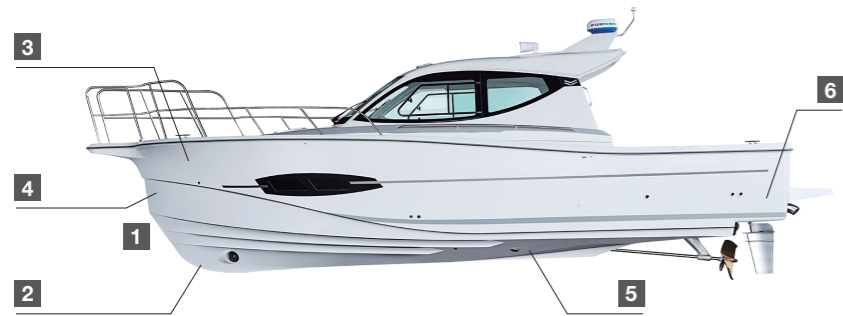
Fishing Cruiser



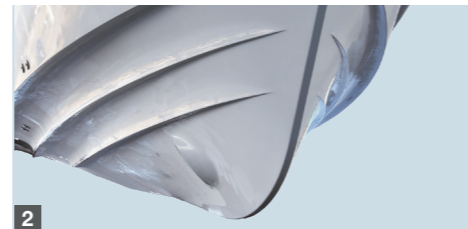
VX34

Centerline length: 10.63m Width: 3.30m Depth: 1.90m

Unique Boat Design



- 1 V type hull**
The large slope at the bottom of the ship eases punching.
- 2 flare**
Expands deck space and suppresses spraying
- 3**
- 4 stem design**
Demonstrates needle retention and high speed with a water line length equivalent to 40ft.
- 5**
- 6 transom shape**
Suppresses hump during acceleration and ensures good visibility.

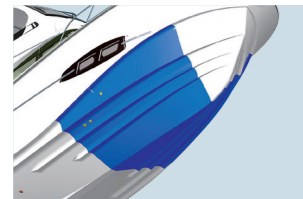


2 Large-sized fin keel
Big Opening on fin keel to counteract the forces of wind and waves.

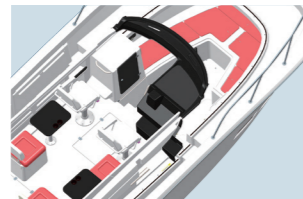


5 Double Chain
Reduced Chine Overhang and wave resistance

TECHNOLOGY



Vacuum Fusion



Lightweight structure



MARINE COMMON-RAIL ENGINE

6LY440

Maximum output
324kW
/3300min⁻¹ *FW output

Powered By Yanmar

SPECIFICATIONS

Model	VX34
Full Length	10.63m
Full Width	3.30m
Full Depth	1.90m
Engine model	6LY440
Maximum output * FW output value	324kW/3300min ⁻¹ [440ps/3300rpm]
Rated output	295kW/3198min ⁻¹ [400ps/3198rpm]
Installation	Anti-vibration
Steering Gear	Hydrostatic
Remote controller	One-handle type (Electric)
Fuel tank	650L X 1
PTO	720mm

For Inquiry, Please Contact: contact_ymia@yanmar.com



**IT'S BRAND
NEW
WORLD**

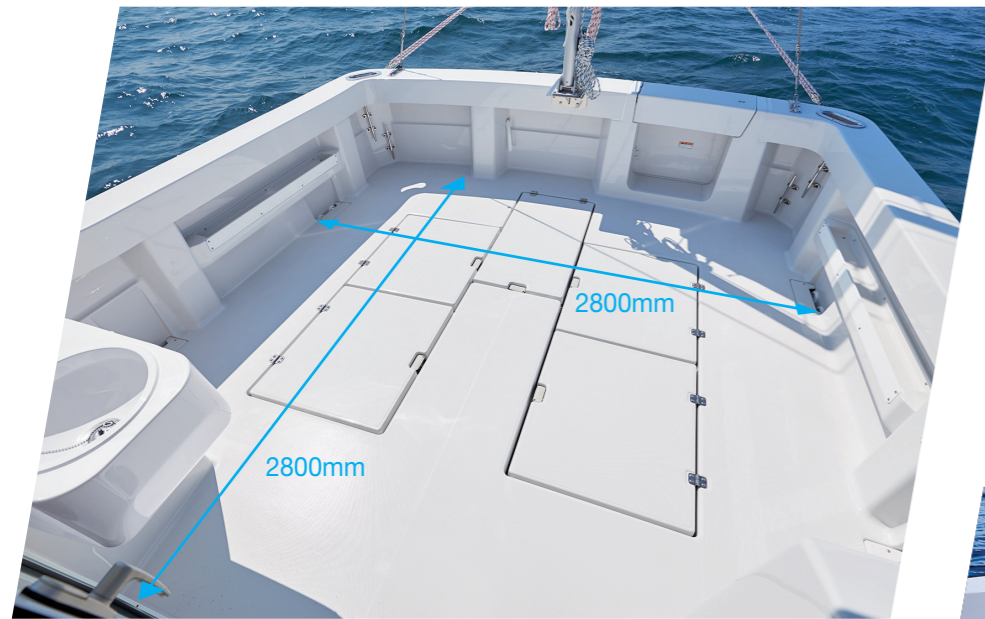
FISHABILITY

FREEDOM TO ROAM

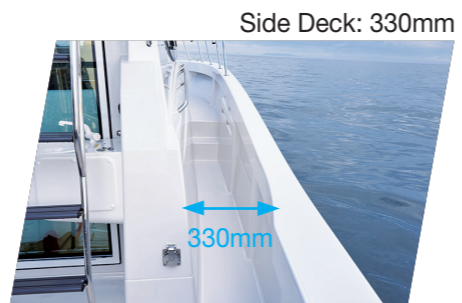
Unrestricted space for
the perfect fishing experience.



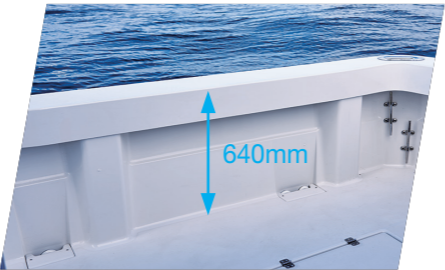
The spacious area allows you to enjoy fishing to your heart's content. The pulpit is high enough for easy casting.



A spacious, wide and flat deck space with emphasis on ease of movement and fishing.



Side Deck: 330mm



Bulwark: 640mm

A RELAXING, DIFFERENT WORLD WHERE YOU CAN ALWAYS ENJOY A COMFORTABLE TIME

CABIN



LOCKER

SEAT CUSHION

The spacious and open space has ample storage space. Furthermore, an air conditioner creates a comfortable environment. With shore power, your stay at marine can be enjoyable .

BERTH



STORAGE



WINDOW WITH SEA VIEW

HELM STATION



REST ROOM