

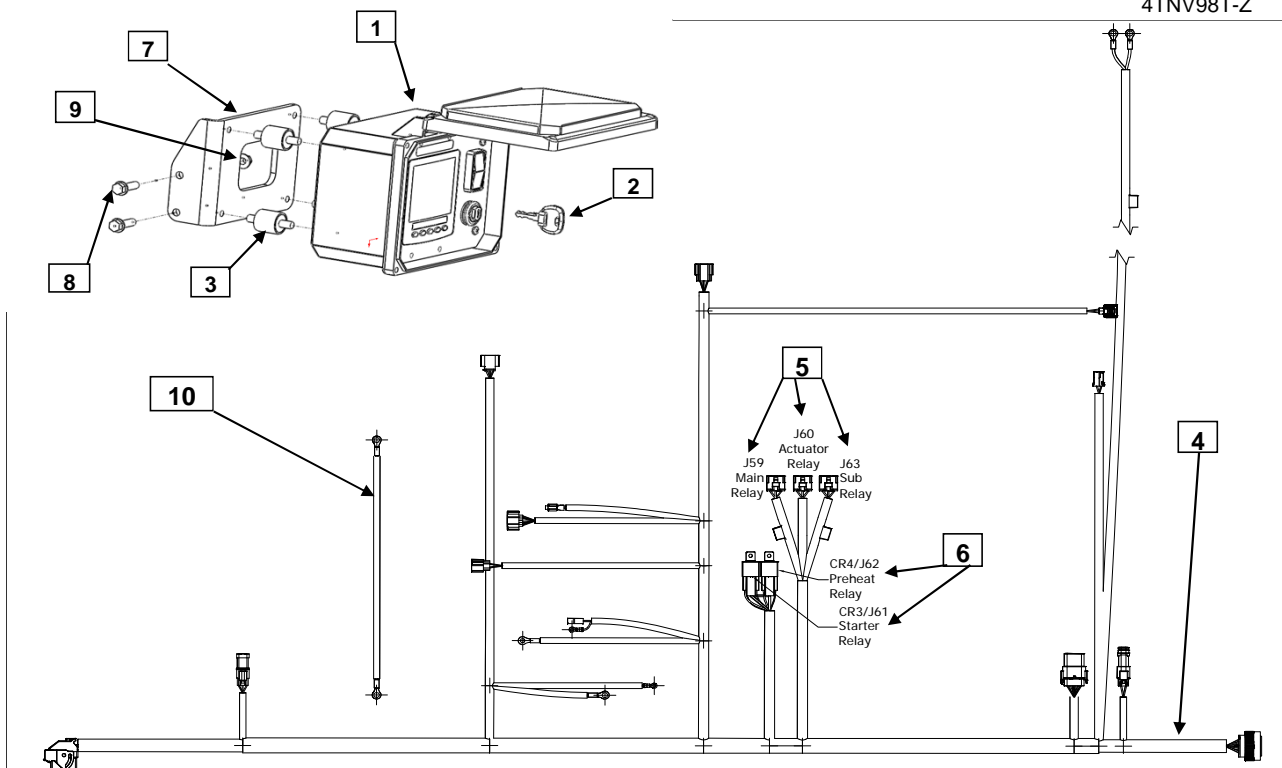


YANMAR CO., LTD.
YANMAR AMERICA CORP.

Item	Part No.	Description	Quantity	Remarks
1	119749-91040	Control Panel	1	
2	119749-91050	Ignition Key, Engine Control Panel	2	
3	119749-91060	Isolator Mount 1/4"-20 KIT	1	
4	119749-91001	Wiring Harness (ECO)	1	
5	198461-52950	Relay	0	Included w/ engine
6	129927-77930	70A, 12V Relay	2	
7	129989-08010	Panel Mounting Bracket	1	
8	26106-080252	Bolt, M8 x 1.25 - 25 (Flanged hex head)	2	
9	26366-080002	Nut, M8 x 1.25 (Flanged hex head)	2	
10	129989-09020	Alternator Sub Harness	1	
11	INS-KP4-0012	Installation Document	1	

MODELS

4TNV84T-Z
 4TNV98-Z
 4TNV98T-Z



NOTE: Sub relay is optional and not included with the engine.



YANMAR

YANMAR CO., LTD.
YANMAR AMERICA CORP.

Installation Instructions

NOTE: Only the Main and Rack Actuator Relays are required for the function of the Yanmar ECO engines. These relays are supplied with the distributor standard specification engines in the loose parts box. The optional Sub-Relay connector (CR5) is intended to activate 4 optional features such as engine stop switch, droop-switch, ECO lamp, and engine speed monitor. All of these optional features are located in the accessory connector (J18) in the wire harness on pins 3,4,5, and 6. In the event that these features need to be activated one additional relay P/N: 198461-52950 must be ordered from the Yanmar America Part Department.

Yanmar America Part Department Phone # : 1-800-966-7685

Hand tighten all bolts and nuts until assembly is completed, then torque according to specifications in Table 1. The numbers in () represent the item numbers.

1. Fasten Control Panel (1) to the Mounting Bracket (7) using Isolators (3) and Nuts.

NOTE: Make sure isolators are not twisted during installation to avoid premature failure of components.

2. Assemble Control Panel (1) and Mounting Bracket (7) assembly to injection pump side front engine leg using M8 x 25 bolts (8) and M8 Flange Nuts (9).
3. The use of the KECMB1 kit is recommended for securing the ECU to the engine for proper harness routing and vibration resistance.
4. A relay mounting bracket has been provided with the kit. This bracket will allow the relays to be securely fastened to the engine to reduce vibration and water damage.

Please see the next page for detailed installation instructions.

WARNING: Be sure battery cables are connected correctly. Disconnecting either the positive or negative battery cable while the equipment is operating will cause premature failure of electronic components. Also, never weld on equipment with the ECU connected to the wire harness.

NOTE: In the event that the 60" wire harness extension needs to be extended please follow the manufacturer's assembly and wiring procedures. Please visit www.deutschip.com and click on the Connector Repair or Helpful Hints link to download a more detailed procedure on how to properly assemble a connector. As always never use scotch locks or butt connectors to extend the wire harness. All extended wires must be soldered and sealed.

Constant Speed Applications:

Enabling Engine Speed Switch #1 -

Locate the 12 pin Deutsch accessory connector and jumper the pin #2 (ground) with pin #11 engine speed switch #1. Use the female connector that comes attached to each wire harness to make the connections. This will enable the Engine Speed Switch #1 for constant speed.

Enabling Engine Speed Switch #2 -

Locate the 12 pin Deutsch accessory connector and jumper the pin #2 (ground) with pin #12 engine speed switch #2. Use the female connector that comes attached to each wire harness to make the connections. This will enable the Engine Speed Switch #2 for constant speed.

Remote Mounted ECU Applications:

For applications that remotely mount the ECU within the wire harnesses reach please use the following ECU mounting guidelines:

- 1- Install the ECU in a location that is not subject to steam or high-pressure water for cleaning
- 2- Install the ECU in a location that is well ventilated and not subject to direct sunlight.
- 3- Install the ECU so that the connector faces downward. Failure to do so may trap water in the connector, resulting in corrosion of connector pins.
- 4- Ensure no water is trapped inside the connector when plugging the connector. Water inside the connector may corrode connector pins, resulting in malfunctioning of the ECU.

Refer to harness drawing for additional design requirements for consideration of application. A troubleshooting guide is available through Yanmar's Distributor Website or by contacting Yanmar America's Service Department.

Table 1: Comply with torque standards in the table to avoid unexpected damage during installation or in the future.

Diameter x Pitch	Kgf-m	Foot-lbf	N-m
M5x0.8	0.4 ~ 0.7	3 ~ 5	4 ~ 6.7
M6 x 1.0	1.0~1.2	7~9	9.8~11.8
M8 x 1.25	1.5 ~ 2.9	10.6 ~ 20.9	14.4 ~ 28.3
M12 x 1.75	8.0 ~ 10.0	57.8 ~ 72.3	78.4 ~ 98.0



YANMAR

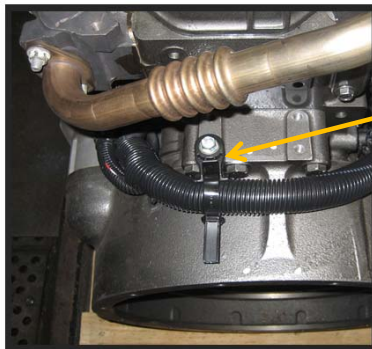
Harness Routing Instructions

YANMAR CO., LTD.
YANMAR AMERICA CORP.

1. Lay the loose harness on engine to gauge fitment and placement of where the relays, ECU, and connectors should go based on the wiring diagrams provided. Refer to TNV application manual and ECU checklist for cautionary measures to be taken when mounting a harness to an engine.
2. Secure largest section of loom to the flywheel housing with the large zip tie and bolt down mount. There will be a series of bolt holes on the top of the housing that will be M8 or M10 depending on the flywheel housing. See charts below for which housing will require which bolt to mount the harness to the housing.

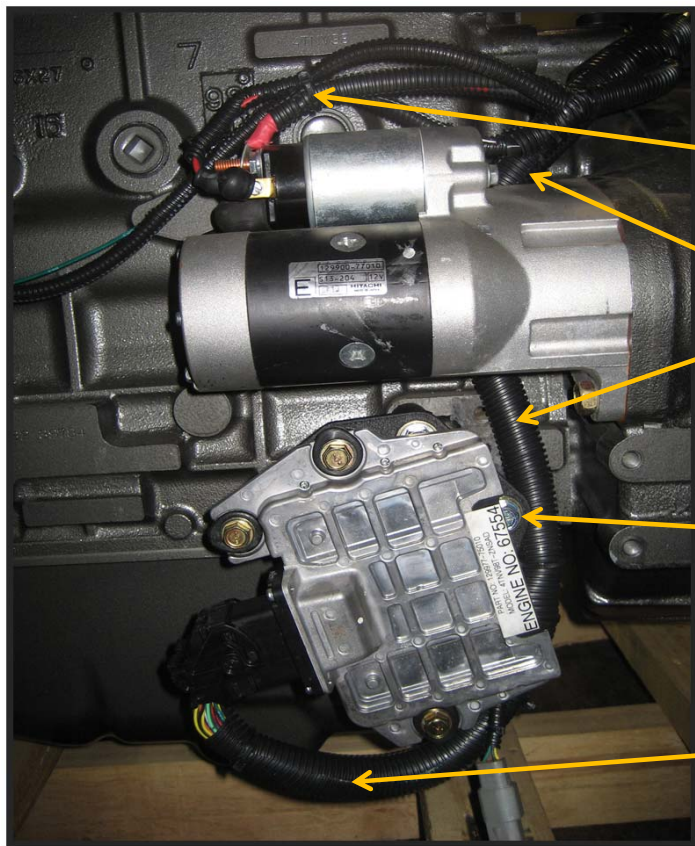
4TNV98(T)	
SAE #3	M10 bolt
SAE #4	M8 bolt

4TNV84T	
SAE #4	M10 bolt
SAE #5	M10 bolt



HellermanTyton mount and large wire tie to hold down the large section of loom to the flywheel housing. Make sure mount and loom have the proper orientation to allow the loom to rest close to the flywheel barrel.

3. Secure the ECU such that the connector faces down and there is a downward loop in the extra harness length to prevent water from pooling in the connector. An optional ECU mounting bracket (Kit # KECMB1) was used to mount the ECU to the engine in the following photos.



Wire tie the starter and alternator loom together above the starter.

Route ECU loom behind the starter, this will allow a drainage loop in the harness to prevent water pooling.

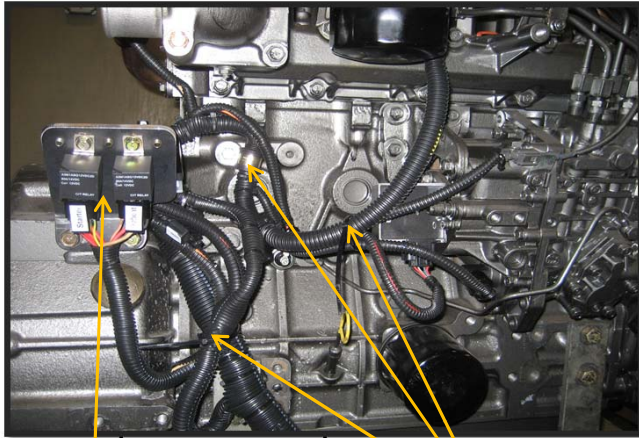
ECU is mounted to engine using the KECMB1 kit, shown behind the ECU in this picture.

Downward loop



Harness Routing Instructions

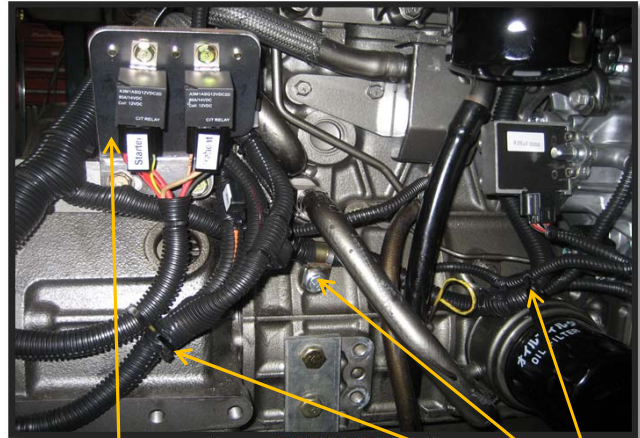
- Using the 15mm P-Clamp, secure the fuel injection pump harness branch to the block. The mounting points for the turbo engines will differ from the naturally aspirated engines. Please see the pictures below for reference on exact positioning. This will allow routing of the harness behind the fuel filter and cooler lines up to the EGR and coolant sensor. Please refer to the corresponding picture below for reference:



4TNV98-Z

Relay mounting bracket fixed to flywheel housing

Use P-clamp to secure harness to block to allow for loose routing of air heater wire and fuel injection pump wiring. Use wire ties to bundle loose loom.

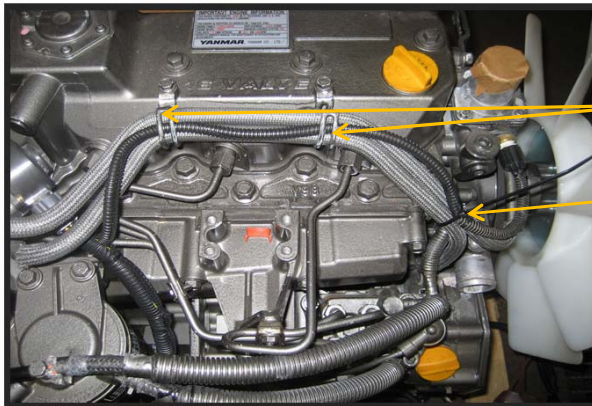


4TNV981-Z
4TNV84T-Z

Relay mounting bracket fixed to flywheel housing

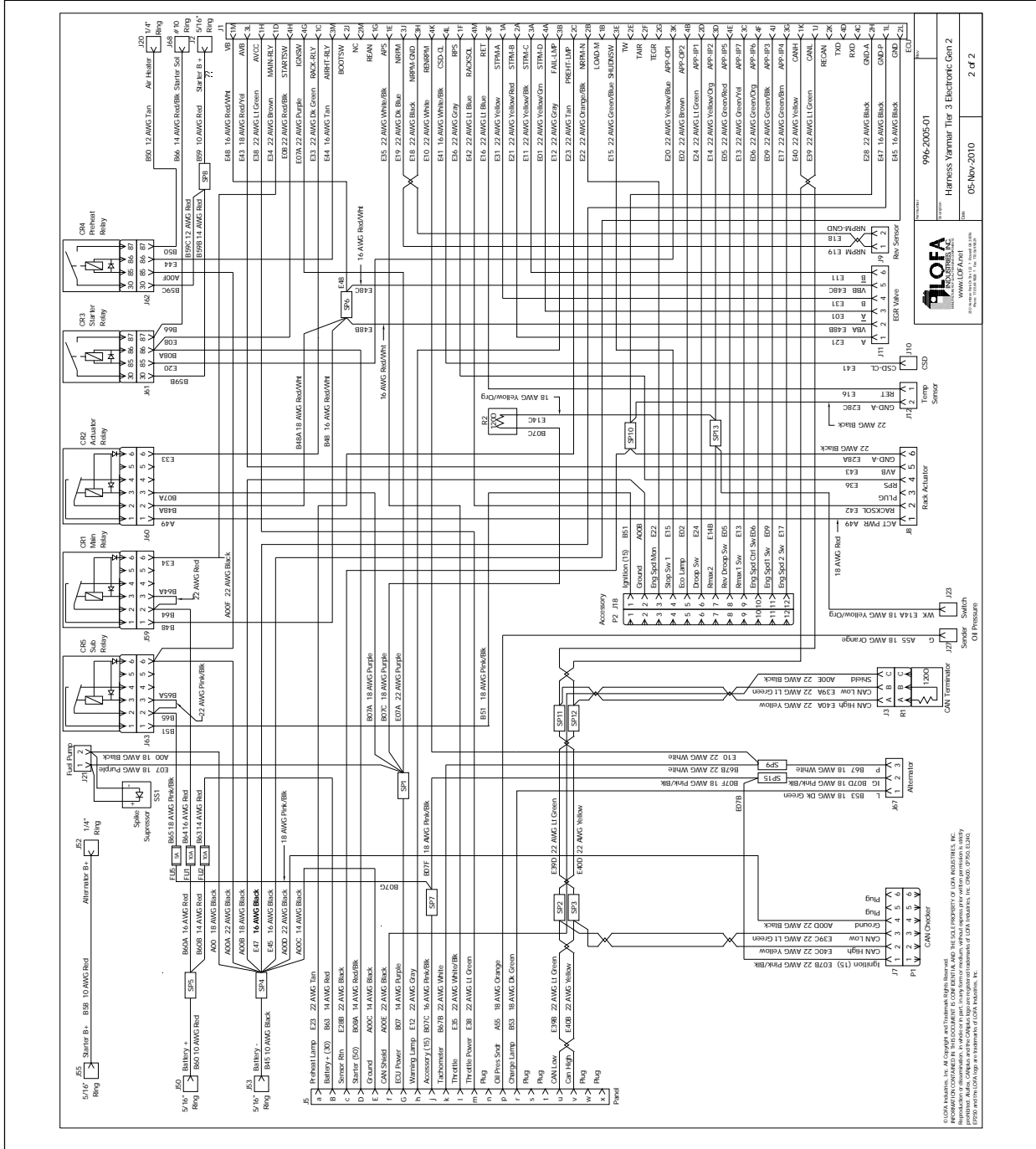
Use P-Clamp on lower bolt hole to secure harness and wire ties to bundle loose loom.

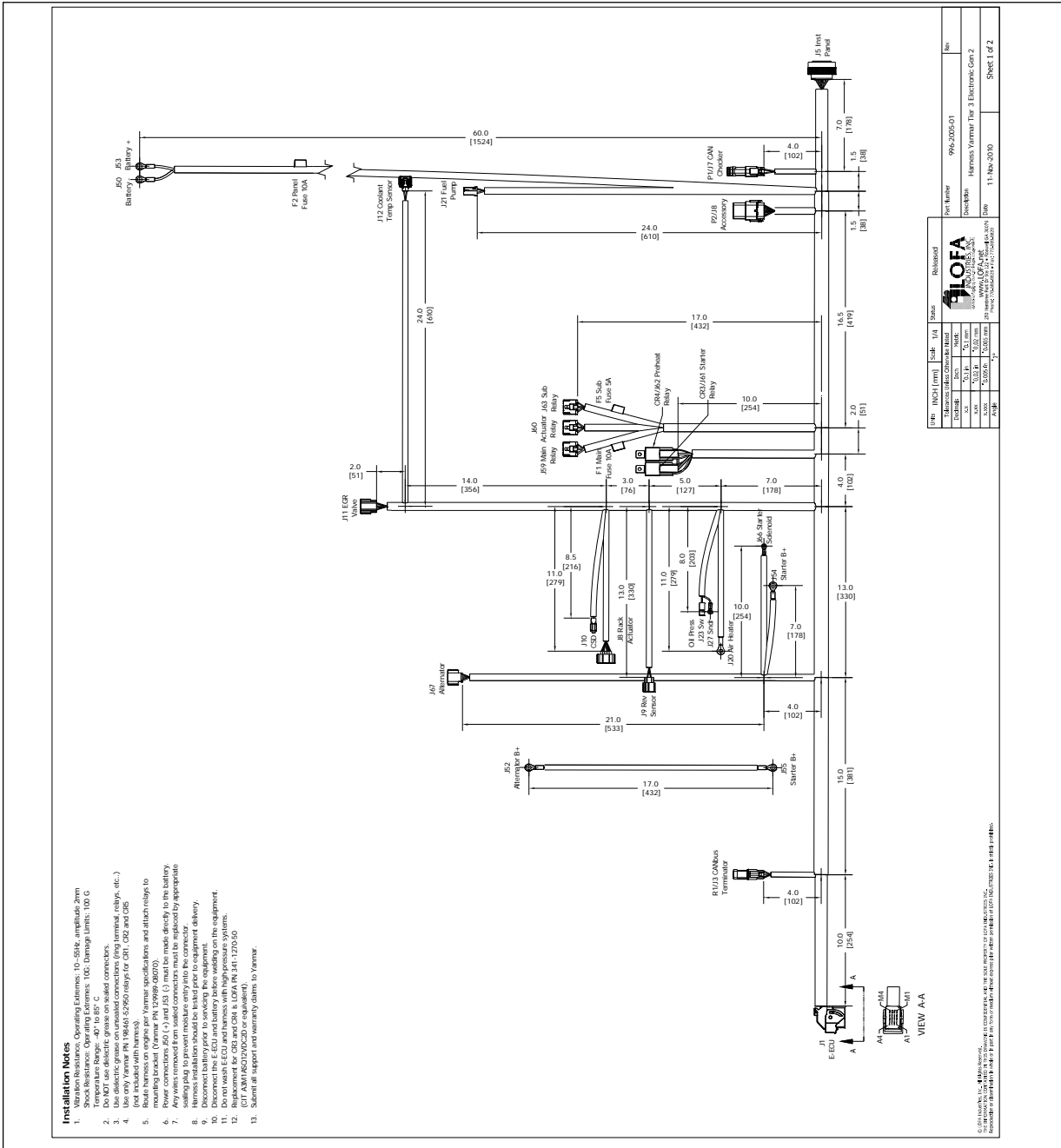
- Route the EGR branch behind the cooling hoses and fuel injection pump up to the EGR connector. Route the coolant sensor pig tail across the valve cover using the existing metal clamps to secure the loom.



Coolant sensor wire routed through the EGR coolant clips. The coolant hoses and harness are secured with a wire tie close to the thermostat.

Refer to harness drawing for additional design requirements for consideration of application. A troubleshooting guide is available through Yanmar's Distributor Website or by contacting Yanmar America's Service Department.





- Installation Notes**
1. Shock Resistance: Operating Extremes: 10 - 50Hz, amplitude 2mm
 2. Temperature Range: -40° to 157° C
 3. Use only Yanmar approved connectors and wiring.
 4. Use dielectric grease on unsoldered connections (ring terminals, relays, etc.)
 5. Do not mix with other Yanmar harnesses.
 6. Power connections J60 (C) and J63 (D) must be made directly to the battery.
 7. Seal all connections with appropriate sealant.
 8. Disconnect the ECU and battery before working on the equipment.
 9. Do not wash ECU and harness with high pressure systems.
 10. Replacement for CR2 and CR4 is LOBA PN 341-1270-50
 11. Do not wash ECU and harness with high pressure systems.
 12. Replacement for CR2 and CR4 is LOBA PN 341-1270-50
 13. Submit all support and warranty claims to Yanmar.

Part Number	Scale	Status	Released
99A-2029-01	1:1	Released	11-Nov-2010
99A-2029-01	1:1	Released	11-Nov-2010
99A-2029-01	1:1	Released	11-Nov-2010
99A-2029-01	1:1	Released	11-Nov-2010
99A-2029-01	1:1	Released	11-Nov-2010
99A-2029-01	1:1	Released	11-Nov-2010
99A-2029-01	1:1	Released	11-Nov-2010
99A-2029-01	1:1	Released	11-Nov-2010
99A-2029-01	1:1	Released	11-Nov-2010
99A-2029-01	1:1	Released	11-Nov-2010

KP4 - PANEL KIT
INS-KP4-0012