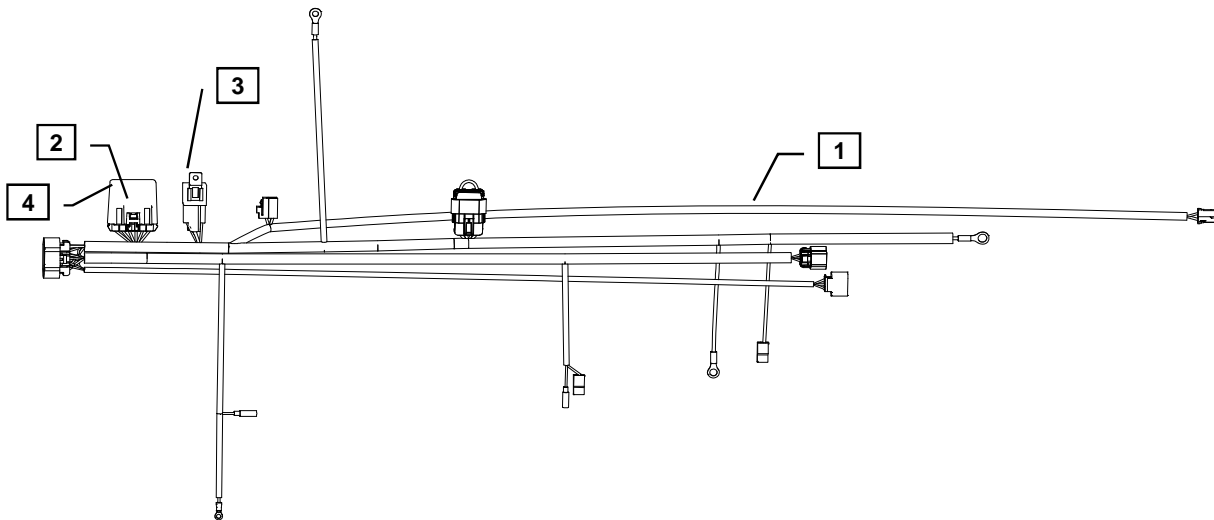




**YANMAR CO., LTD.**  
**YANMAR AMERICA CORP.**

Item	Part No.	Description	Quantity	Remarks
1	129687-91100	Wiring Harness (DI)3	1	(A)
2	119749-91420	Control Module Timer	1	
3	119749-91460	Relay 70A 12V Sealed	1	
4	119749-91440	Control Module Housing	1	
5	1908-00	Switch Retainer	2	
6	119749-91500	60" Harness Extension	1	(B)



**TIER 2 MODELS**

3TNV82A  
 3TNV88  
 3TNV84T  
 4TNV88  
 4TNV84T  
 4TNV98  
 4TNV98T

**TIER 3 MODELS**

3TNV82A-GGE  
 3TNV84T  
 4TNV84T-BGGE

Remarks: (A) When utilizing the Yanmar harness to a control panel that has 10 ft. or more of wiring between them, you must install a relay, 119749-91400.  
 (B) 119749-91500 is an extension used to connect harness, 129687-91100, to customer specified control panel.



---

---

## Installation Instructions

---

---

Hand tighten all bolts and nuts until assembly is completed, then torque according to specifications in Table 1. The numbers in ( ) represent the item numbers.

1. Connect harness terminals to appropriate locations. See engine wiring harness diagram and schematics provided with panel kit.

NOTE: The spare ring terminal in the kit is for the S-Terminal on the Denso starter. The spade connector, for the Hitachi starter, will have to be replaced with the ring terminal if Denso Starter is equipped.

2. Use the Switch Retainer (5) to mount the Relay (3) to an open thread bore on the cylinder head.
3. After connecting all terminals to appropriate locations, check the following:
  - a) Make sure the wires do not contact the exhaust manifold or muffler.
  - b) Make sure the wires do not contact any sharp or abrasive surfaces.
  - c) Use wire ties to secure the wire harness to the engine.
  - d) Cover all harness terminals not used after assembly is completed

WARNING: Be sure battery cables are connected correctly before operation. If at any time during operation, the battery cables are removed, the harness could fail prematurely.

NOTE: Application requiring a harness extension to a control panel over 10Ft in length must use the starter relay at the connector labeled Starter Jumper, 119749-91400.

Refer to harness drawing for additional design requirements for consideration of application. A troubleshooting guide is available through Yanmar's Distributor Website or by contacting Yanmar America's Service Department.

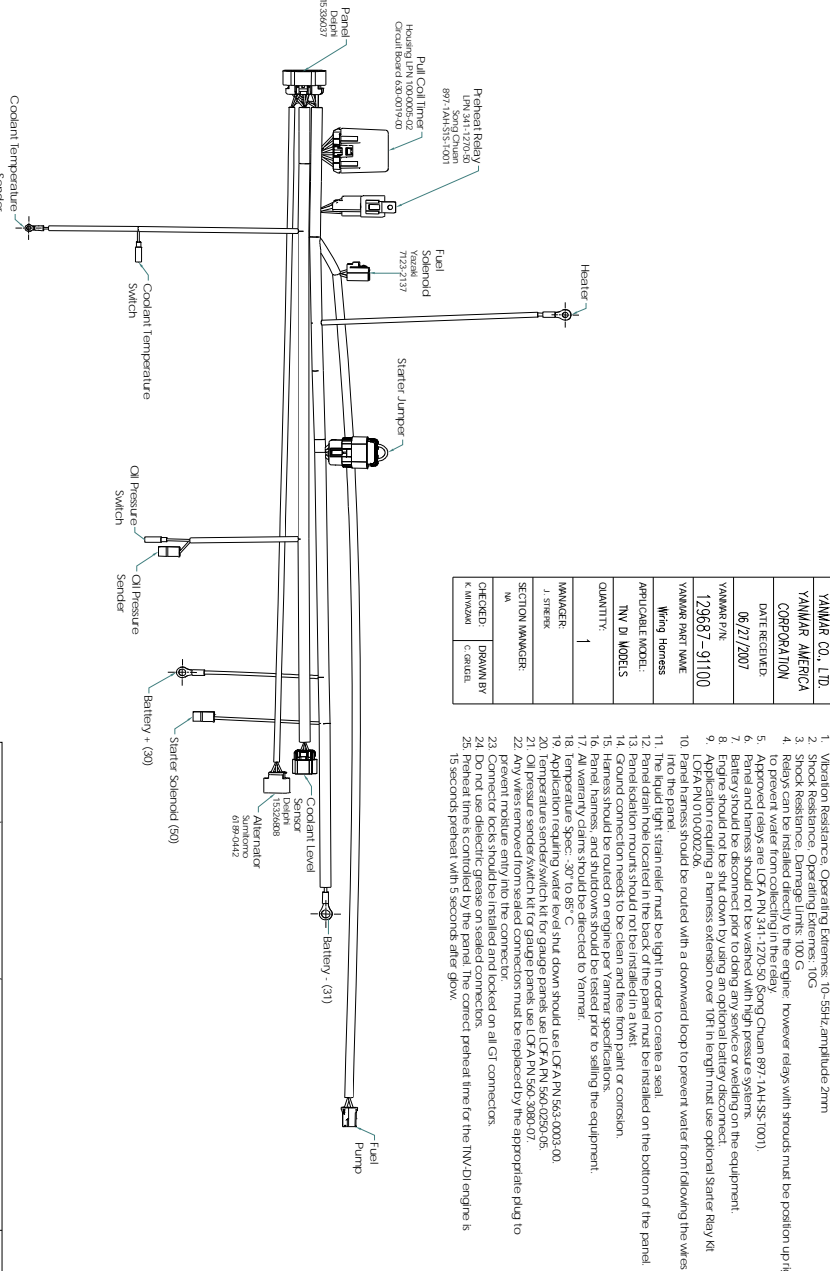
NOTE: Comply with torque standards in the table to avoid unexpected damage during installation or in the future.

Diameter x Pitch	Kgf-m	Foot-lbf	N-m
M8 x 1.25	1.5 ~ 2.9	10.6 ~ 20.9	14.4 ~ 28.3
M10 x 1.50	4.5 ~ 5.5	32.5 ~ 39.8	44.0 ~ 54.0
M12 x 1.75	8.0 ~ 10.0	57.8 ~ 72.3	78.4 ~ 98.0



Installation Instructions

THE INFORMATION CONTAINED IN THIS DRAWING IS CONFIDENTIAL AND THE SOLE PROPERTY OF YANMAR INDUSTRIES, INC.  
Reproduction or dissemination in whole or in part by any form or medium without express prior written permission of YANMAR INDUSTRIES, INC. is prohibited.  
All rights of design reserved.



YANMAR CO., LTD.	YANMAR AMERICA CORPORATION
DATE RECEIVED	06/27/2007
YANMAR PART NAME	129687-91100
APPLICABLE MODEL	INV DI MODELS
QUANTITY	1
SECTION NUMBER	MANAGER
CHECKED	MANAGER
REVISION	MANAGER

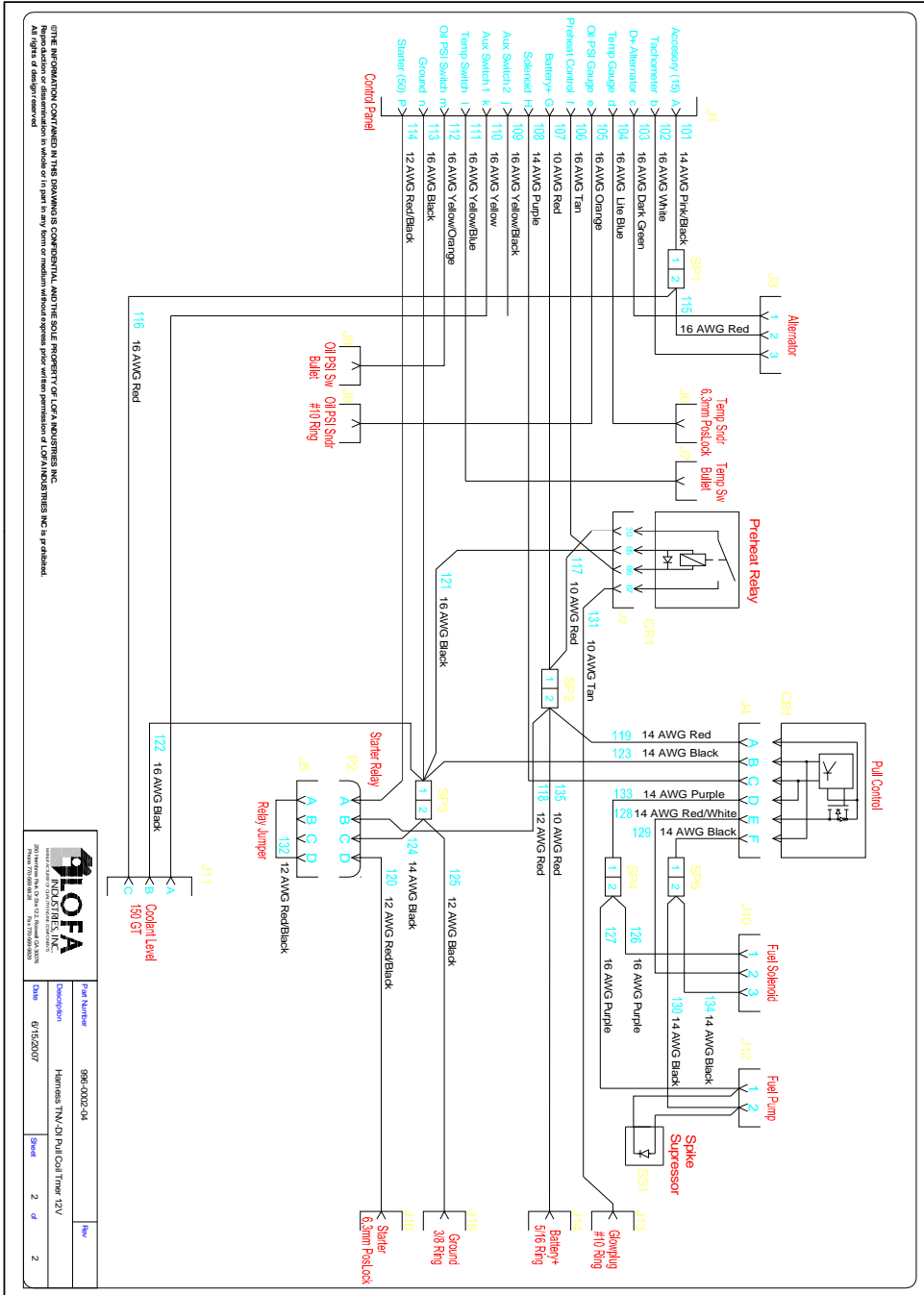
NOTES

- Vibration Resistance, Operating Extremes, 10-50Hz amplitude 2mm
- Shock Resistance, Operating Extremes, 10G
- Shock Resistance, Dismantle Limits, 10G
- Do not immerse the engine harness in water. However, relays with shrouds must be positioned upright to prevent water from collecting in the relay.
- Approved relays are LCPA PN 341-1270-50 (Soyong Chuan 897-1AH-SIS-1001).
- Panel and harness should not be washed with high pressure systems.
- Battery should be disconnected prior to doing any service or welding on the equipment.
- Do not use electrical tape to secure any wires.
- Application requiring a harness substitution over 10ft in length must use optional Starter Relay Kit, LCPA PN 010-0002-06.
- Panel harness should be routed with a downward loop to prevent water from following the wires into the panel.
- Panel drain holes must be kept in order to create a seal.
- Panel drain hole located in the back of the panel must be installed on the bottom of the panel.
- Ground connection needs to be clean and free from paint or corrosion.
- Harness should be routed on engine per Yanmar specifications.
- All venturi cleaners should be disconnected to Yanmar.
- Temperature Spec: -30° to 85° C
- Application requiring water level shut down should use LCPA PN 563-0003-00
- Temperature sender/switch kit for gauge panels use LCPA PN 563-0050-05.
- Any wires removed from the harness should be replaced with the correct preheat time for the INV-DI engine to prevent moisture entry into the connector.
- Connector locks should be installed and locked on all GT connectors.
- Do not use dielectric grease on sealed connectors.
- Special preheat times for the panel preheat time for the INV-DI engine is 15 seconds, preheat with 5 seconds after 15s.

TOLERANCES +/-	Fit Number	Rev
X .1	396-002-04	
.XX .01	Description	
.XXX .005	Harness INV-DI Full Coil Line 12V	
MMO 12	Date	6/15/2007
	Sheet	1 of 2



Installation Instructions



THE INFORMATION CONTAINED IN THIS DRAWING IS CONFIDENTIAL AND THE SOLE PROPERTY OF LORAIN INDUSTRIES, INC. Any reproduction or dissemination in whole or in part in any form or medium without express prior written permission of LORAIN INDUSTRIES, INC. is prohibited. All Rights Reserved.

<b>ILOFA</b> INDUSTRIAL OIL FILLS, INC. 2801 New River Rd. Ste. 122, Raleigh, NC 27609 Phone: 919.876.8888 Fax: 919.876.8889	
Part Number	998-0002-04
Description	Harness TN-01 Pul Coat Trmr 12V
Date	6/15/2007
Sheet	2 of 2