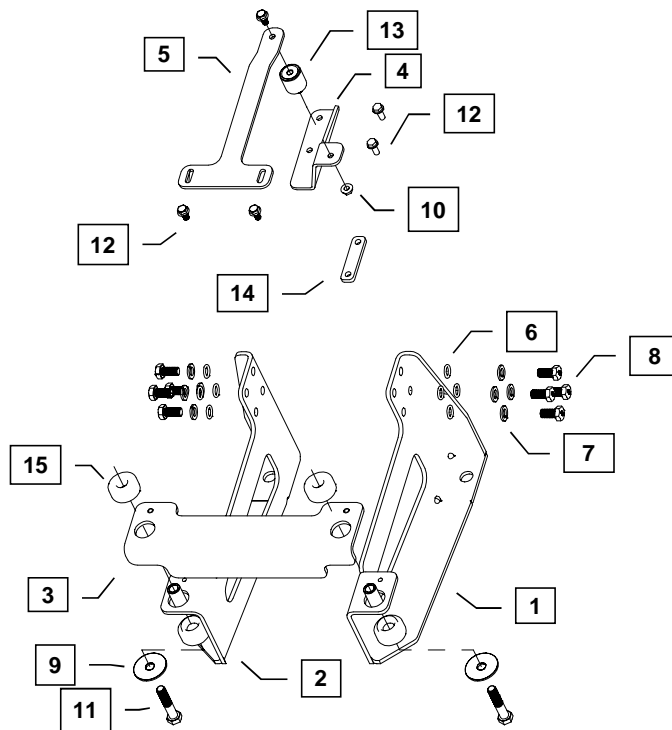




YANMAR CO., LTD.
YANMAR AMERICA CORP.

Item	Lev.	O	Part No.	Description	Quantity	Remarks
1	-		129689-44810	Bracket, Left Side	1	
2	-		129689-44820	Bracket, Right Side	1	
3	-		129689-44830	Plate, Rad Bottom Brkt	1	
4	-		129689-44840	Mount, Upper	1	
5	-		129689-44850	Support, Upper	1	
6	-	X	122689-44250	Washer, Plain 12mm, Narrow, (ANSI B18.22.1)	8	(A)
7	-	X	129689-44260	Washer, Lock 12mm, (Helical spring) (BS 4464)	8	(A)
8	-		129689-44270	Bolt, M12 X 1.75 - 25, (Hex Head) (DIN 933)	8	(A)
9	-		129689-44860	Washer, Plain 0.500 x 2.00 x 0.125, (ANSI B18.22.1)	2	
10	-		129689-44280	Nut, M8 X 1.25, (Flange, serrated hex head)	1	
11	-		129689-44960	Bolt, 1/2 X 13 - 2 1/2, (Hex), (ANSI B18.22.1)	2	
12	-		129689-44290	Bolt, M8 X 1.25 - 16, (Flange, serrated hex head), Class 90	5	
13	-		129689-44880	Isolator, 32 X 32, M8 X 1.25 Stud	1	
14	-		129689-44130	Spacer	1	(B)
15	-		129689-44890	Isolator, 46.4mm, 51.21mm, 1/2 X 13	2	



MODELS
3TNV82A

Remarks: (A) 26106-120202 is a service part used to replace the bolt, lock washer and washer assembly (items: 6, 7 and 8).
(B) Spacer is only used when the Air Cleaner kit is not installed.



Installation Instructions

Hand tighten all bolts and nuts until assembly is completed, then torque according to specifications in Table 1. The numbers in () represent the item numbers.

1. Fasten Upper Mount (4) to Air Cleaner Bracket on intake manifold with M8 X 1.25 - 20mm bolts (13). If engine does not use an Air Cleaner Kit, use Spacer (14) between Upper Mount and intake manifold.
2. Fasten M8 Isolator (13) and Upper Support (5) to Upper Mount using M8 X 1.25 - 16mm bolt (12) and M8 X 1.25 nut (10).
3. Assemble Left Side Bracket (1) and Right Side Bracket (2) to engine mounting pads using Washers (6), Lock Washers (7) and M12 X 1.75 - 25mm bolts (8) provided in the kit.
4. Locate Bottom Bracket (3) onto Side Legs using guide pins. Assemble Isolators (15) in large openings at the sides of the Cross Bracket.
5. Install the Radiator Kit and refer to Radiator Kit instructions to complete assembly.

NOTE: Comply with torque standards in the table to avoid unexpected damage during installation or in the future.

TABLE 1:

Diameter x Pitch	Kgf-m	Foot-lbf	N-m
M8 x 1.25	1.5 ~ 2.9	10.6 ~ 20.9	14.4 ~ 28.3
M10 x 1.50	4.5 ~ 5.5	32.5 ~ 39.8	44.0 ~ 54.0
M12 x 1.75	8.0 ~ 10.0	57.8 ~ 72.3	78.4 ~ 98.0